

À des fins de recherche uniquement

Anticorps Monoclonal anti-PTPRO

Numéro de catalogue: 67000-1-Ig **1 Publications**



Informations de base

Numéro de catalogue: 67000-1-Ig	Numéro d'acquisition GenBank: BC035960	Méthode de purification: Purification par protéine A
Taille: 150ul , Concentration: 2004 µg/ml by Nanodrop and 1000 µg/ml by Bradford method using BSA as the standard;	Identification du gène (NCBI): 5800	CloneNo.: 2F2B4
Hôte: Mouse	Nom complet: protein tyrosine phosphatase, receptor type, O	Dilutions recommandées: WB 1:500-1:2000 IHC 1:1000-1:4000 IF 1:400-1:1600
Isotype: IgG2b	MW calculé 138 kDa	
Immunogen Catalog Number: AG8284	MW observés: 160 kDa, 180-220 kDa	

Applications

Applications testées: IF, IHC, WB, ELISA	Contrôles positifs: WB : tissu rénal de porc, IHC : tissu rénal humain, IF : tissu rénal humain,
Demandes citées: WB	
Spécificité de l'espèce: Humain, porc	
Espèces citées: Humain	
Remarque-IHC: il est suggéré de démasquer l'antigène avec un tampon de TE buffer pH 9,0; (*) A défaut, 'le démasquage de l'antigène peut être 'effectué avec un tampon citrate pH 6,0.	

Informations générales

PTPRO (receptor-type tyrosine-protein phosphatase O) is also named as GLEPP1, PTPU2 and belongs to the protein-tyrosine phosphatase family. The protein is a receptor-like membrane protein tyrosine phosphatase expressed at the apical membrane of the podocyte foot processes in the kidney (PMID:21722858). The 1,159-amino acid predicted mature protein contains a large extracellular domain, a single transmembrane domain, and a single intracellular PTPase domain. Defects in PTPRO are the cause of nephrotic syndrome type 6 (NPHS6). In reducing conditions, PTPRO can form a smear from 180 to 220 kDa; In non-reducing conditions, a band appears around 350 kDa, which likely represents the dimeric form of full-length PTPRO (PMID: 19573017).

Publications notables

Autrice	Pubmed ID	Journal	Application
Shushan Yan	31827380	Mediators Inflamm	WB

Stockage

Stockage:
Stocker à -20 °C
Tampon de stockage:
PBS avec azoture de sodium à 0,02 % et glycérol à 50 % pH 7,3
L'aliquotage n'est pas nécessaire pour le stockage à -20C

*** Les 20ul contiennent 0,1% de BSA.

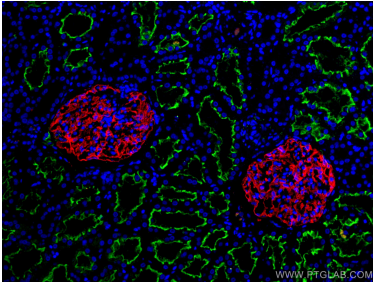
For technical support and original validation data for this product please contact:

T: 1 (888) 4PTGLAB (1-888-478-4522) (toll free in USA), or 1(312) 455-8498 (outside USA)

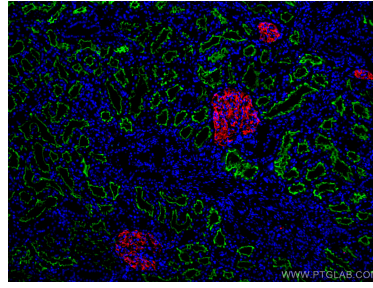
E: proteintech@ptglab.com
W: ptglab.com

This product is exclusively available under Proteintech Group brand and is not available to purchase from any other manufacturer.

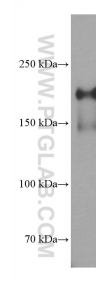
Données de validation sélectionnées



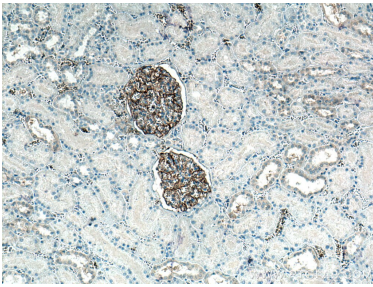
Immunofluorescent analysis of (4% PFA) fixed human kidney tissue using PTPRO antibody (67000-1-Ig, Clone: 2F2B4) at dilution of 1:800 and CoraLite®594-Conjugated AffiniPure Goat Anti-Mouse IgG(H+L), ACE2 antibody (21115-1-AP, green).



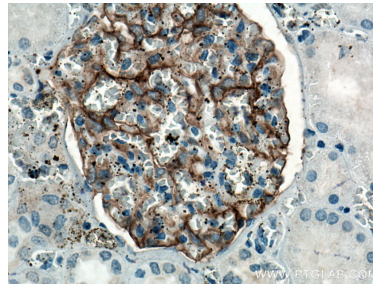
Immunofluorescent analysis of (4% PFA) fixed human kidney tissue using PTPRO antibody (67000-1-Ig, Clone: 2F2B4) at dilution of 1:800 and CoraLite®594-Conjugated AffiniPure Goat Anti-Mouse IgG(H+L), ACE2 antibody (21115-1-AP, green).



pig kidney tissue were subjected to SDS PAGE followed by western blot with 67000-1-Ig (PTPRO antibody) at dilution of 1:2000 incubated at room temperature for 1.5 hours.



Immunohistochemical analysis of paraffin-embedded human kidney tissue slide using 67000-1-Ig (PTPRO antibody) at dilution of 1:3000 (under 10x lens. Heat mediated antigen retrieval with Tris-EDTA buffer (pH 9.0).



Immunohistochemical analysis of paraffin-embedded human kidney tissue slide using 67000-1-Ig (PTPRO antibody) at dilution of 1:3000 (under 40x lens. Heat mediated antigen retrieval with Tris-EDTA buffer (pH 9.0).