

À des fins de recherche uniquement

Anticorps Monoclonal anti-RRM2

Numéro de catalogue: 67006-1-Ig **1 Publications**



Informations de base

Numéro de catalogue: 67006-1-Ig	Numéro d'acquisition GenBank: BC030154	Méthode de purification: Purification par protéine G
Taille: 150ul , Concentration: 1000 µg/ml by Bradford method using BSA as the standard;	Identification du gène (NCBI): 6241	CloneNo.: 2A9A7
Hôte: Mouse	Nom complet: ribonucleotide reductase M2 polypeptide	Dilutions recommandées: WB 1:5000-1:50000 IP 0.5-4.0 ug for IP and 1:1000-1:4000 for WB
Isotype: IgG1	MW calculé: 389 aa, 45 kDa	IF 1:50-1:500
Immunogen Catalog Number: AG28664	MW observés: 45 kDa	

Applications

Applications testées: IF, IP, WB, ELISA	Contrôles positifs:
Demandes citées: WB	WB : cellules HeLa, cellules A431, cellules HEK-293, cellules Jurkat, cellules K-562, cellules MCF-7, cellules THP-1
Spécificité de l'espèce: Humain	IP : cellules HEK-293,
Espèces citées: Humain	IF : cellules HepG2,

Informations générales

Ribonucleotide reductase M2 subunit is one of two subunits that constitute ribonucleotide reductase, the enzyme that catalyzes the conversion of ribonucleotide 5'-diphosphates into 2'-deoxyribonucleotides, a rate-limiting step in the production of 2'-deoxyribonucleoside 5'-diphosphates (dNTP) required for DNA synthesis and repair [PMID:20825972, 19250552]. RRM2 is only expressed during the late G1/early S phase, and degraded in late S phase, and the activity of RNR, and therefore DNA synthesis and cell proliferation, is controlled during the cell cycle by the synthesis and degradation of RRM2 subunit [PMID:3894352].

Publications notables

Autrice	Pubmed ID	Journal	Application
S M Du	32122142	Neoplasma	WB

Stockage

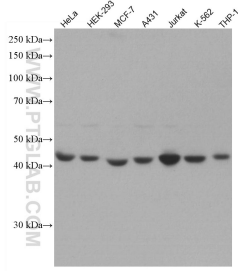
Stockage:
Stocker à -20°C. Stable pendant un an après l'expédition.
Tampon de stockage:
PBS avec azoture de sodium à 0,02 % et glycérol à 50 % pH 7,3
L'aliquotage n'est pas nécessaire pour le stockage à -20C

*** Les 20ul contiennent 0,1% de BSA.

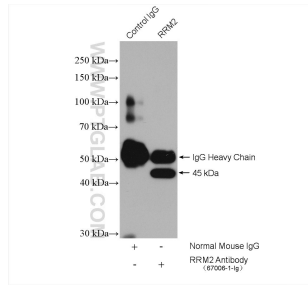
For technical support and original validation data for this product please contact:
T: 1 (888) 4PTGLAB (1-888-478-4522) (toll free in USA), or 1(312) 455-8498 (outside USA)
E: proteintech@ptglab.com
W: ptglab.com

This product is exclusively available under Proteintech Group brand and is not available to purchase from any other manufacturer.

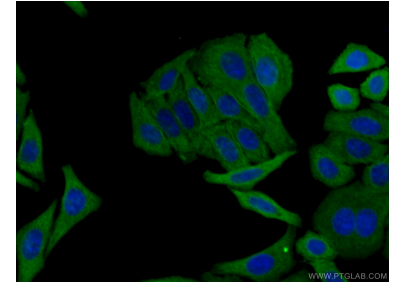
Données de validation sélectionnées



Various lysates were subjected to SDS PAGE followed by western blot with 67006-1-Ig (RRM2 antibody) at dilution of 1:20000 incubated at room temperature for 1.5 hours.



IP result of anti-RRM2 (IP:67006-1-Ig, 5ug; Detection:67006-1-Ig 1:2000) with HEK-293 cells lysate 2320 ug.



Immunofluorescent analysis of (-20°C Ethanol) fixed HepG2 cells using 67006-1-Ig (RRM2 antibody) at dilution of 1:100 and CoraLite488-Conjugated AffiniPure Goat Anti-Mouse IgG(H+L).