

À des fins de recherche uniquement

Anticorps Monoclonal anti-Endothelin 1



Numéro de catalogue: 67008-1-Ig **2 Publications**

Informations de base

Numéro de catalogue: 67008-1-Ig	Numéro d'acquisition GenBank: BC009720	Méthode de purification: Purification par protéine G
Taille: 150ul , Concentration: 1000 µg/ml by Bradford method using BSA as the standard;	Identification du gène (NCBI): 1906	CloneNo.: 2C5B3
Hôte: Mouse	Nom complet: endothelin 1	Dilutions recommandées: WB 1:1000-1:4000
Isotype: IgG1	MW calculé: 212 aa, 24 kDa	
Immunogen Catalog Number: AG28334	MW observés: 24 kDa	

Applications

Applications testées: FC, WB, ELISA	Contrôles positifs: WB : tissu placentaire humain,
Demandes citées: WB	
Spécificité de l'espèce: Humain	
Espèces citées: Humain	

Informations générales

EDN1, also named as Endothelin-1, PPET1 and ET-1, belongs to the endothelin/sarafotoxin family. Endothelins are endothelium-derived vasoconstrictor peptides. Emerging basic science, and animal and human data all suggest that EDN1 is a potentially important contributor in the pathobiology of fibrosing disorders, including those that affect the lung (PMID:2005532).

Publications notables

Autrice	Pubmed ID	Journal	Application
Ying Xue	35950100	Biomed Rep	WB
Zheng Wang	37188751	Hypertens Res	WB

Stockage

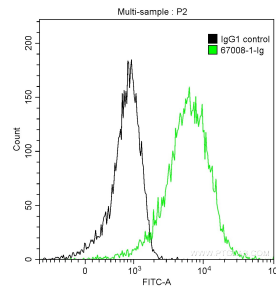
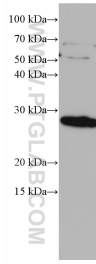
Stockage:
Stocker à -20 °C.
Tampon de stockage:
PBS avec azoture de sodium à 0,02 % et glycérol à 50 % pH 7,3
L'aliquotage n'est pas nécessaire pour le stockage à -20C

*** Les 20ul contiennent 0,1% de BSA.

For technical support and original validation data for this product please contact:
T: 1 (888) 4PTGLAB (1-888-478-4522) (toll free in USA), or 1(312) 455-8498 (outside USA)
E: proteintech@ptglab.com
W: ptglab.com

This product is exclusively available under Proteintech Group brand and is not available to purchase from any other manufacturer.

Données de validation sélectionnées



human placenta tissue were subjected to SDS PAGE followed by western blot with 67008-1-Ig (EDN1 antibody) at dilution of 1:2000 incubated at room temperature for 1.5 hours.

1×10^6 HEK-293T cells were intracellularly stained with 0.2 μ g Anti-Human Endothelin 1 (67008-1-Ig, Clone:2C5B3) and CoraLite[®]488-Conjugated AffiniPure Goat Anti-Mouse IgG(H+L) at dilution 1:1000 (green), and 0.2 μ g Mouse IgG1 Isotype Control (66360-1-Ig, Clone: T1F8D3F10) (black). Cells were fixed with 4% PFA and permeabilized with 0.1% TritonX-100.