

À des fins de recherche uniquement

Anticorps Monoclonal anti-KIF5A

Numéro de catalogue: 67009-1-Ig



Informations de base

Numéro de catalogue: 67009-1-Ig	Numéro d'acquisition GenBank: BC146670	Méthode de purification: Purification par protéine G
Taille: 150ul, Concentration: 1900 µg/ml by Nanodrop and 1000 µg/ml by Bradford method using BSA as the standard;	Identification du gène (NCBI): 3798	CloneNo.: 1A7E3
Hôte: Mouse	Nom complet: kinesin family member 5A	Dilutions recommandées: WB 1:500-1:3000
Isotype: IgG1	MW calculé 1032 aa, 117 kDa	
Immunogen Catalog Number: AG15682	MW observés: 130 kDa	

Applications

Applications testées:
WB, ELISA
Spécificité de l'espèce:
Humain, porc, rat, souris

Contrôles positifs:

WB : tissu cérébral de rat, tissu cérébral de porc, tissu
cérébral de souris, tissu de cervelet de rat

Informations générales

Kinesin superfamily proteins (KIFs) are microtubule-based molecular motors essential for the intracellular transport of various cargos, including organelles, proteins, and RNAs. KIF 5A is expressed exclusively in neurons and transports neuronal cargoes into axons and dendrites. KIF 5A mutations have been associated with Charcot-Marie-Tooth Type 2, an axonal peripheral neuropathy characterized by progressive loss of peripheral sensation and muscle wasting.

Stockage

Stockage:
Stocker à -20°C. Stable pendant un an après l'expédition.
Tampon de stockage:
PBS avec azoture de sodium à 0,02 % et glycérol à 50 % pH 7,3
L'aliquotage n'est pas nécessaire pour le stockage à -20C

*** Les 20ul contiennent 0,1% de BSA.

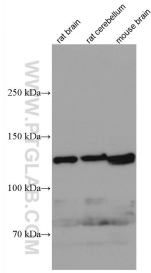
For technical support and original validation data for this product please contact:

T: 1 (888) 4PTGLAB (1-888-478-4522) (toll free
in USA), or 1(312) 455-8498 (outside USA)

E: proteintech@ptglab.com
W: ptglab.com

This product is exclusively available under Proteintech Group brand and is not available to purchase from any other manufacturer.

Données de validation sélectionnées



Various lysates were subjected to SDS PAGE followed by western blot with 67009-1-Ig (KIF5A antibody) at dilution of 1:3000 incubated at room temperature for 1.5 hours.