

À des fins de recherche uniquement

Anticorps Monoclonal anti-RASGRF1

Numéro de catalogue: 67010-1-Ig



Informations de base

Numéro de catalogue: 67010-1-Ig	Numéro d'acquisition GenBank: BC040275	Méthode de purification: Purification par protéine A
Taille: 150ul, Concentration: 2500 µg/ml by Nanodrop and 1000 µg/ml by Bradford method using BSA as the standard;	Identification du gène (NCBI): 5923	CloneNo.: 1A4D4
Hôte: Mouse	Nom complet: Ras protein-specific guanine nucleotide-releasing factor 1	Dilutions recommandées: WB 1:1000-1:6000
Isotype: IgG1	MW calculé: 134 kDa	
Immunogen Catalog Number: AG6937	MW observés: 145 kDa	

Applications

Applications testées:
WB, ELISA
Spécificité de l'espèce:
porc, rat

Contrôles positifs:

WB : tissu de cervelet de porc, tissu cérébral de porc,
tissu cérébral de rat, tissu de cervelet de rat

Informations générales

RasGRF1, a member of calmodulin-activated guanine-nucleotide exchange factors (GEFs), highly expressed at the synaptic junctions of the central nervous system (CNS). It is similar to the *Saccharomyces cerevisiae* CDC25. RASGRF1 serves as an *in vivo* activator for H-RAS and members of the R-RAS and RAC subfamilies. Several studies have shown that RasGRF1 also binds to microtubules and participate in the regulation of neurite outgrowth. RasGRF1 has been implicated in neuronal excitability. The studies of the similar gene in mouse suggested that the Ras-GEF activity of this protein in brain can be activated by Ca²⁺ influx, muscarinic receptors, and G protein beta-gamma subunit. Mouse studies also indicated that the Ras-GEF signaling pathway mediated by this protein may be important for long-term memory.

Stockage

Stockage:
Stocker à -20°C. Stable pendant un an après l'expédition.
Tampon de stockage:
PBS avec azoture de sodium à 0,02 % et glycérol à 50 % pH 7,3
L'aliquotage n'est pas nécessaire pour le stockage à -20C

*** Les 20ul contiennent 0,1% de BSA.

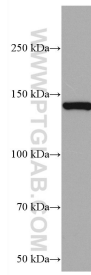
For technical support and original validation data for this product please contact:

T: 1 (888) 4PTGLAB (1-888-478-4522) (toll free
in USA), or 1(312) 455-8498 (outside USA)

E: proteintech@ptglab.com
W: ptglab.com

This product is exclusively available under Proteintech Group brand and is not available to purchase from any other manufacturer.

Données de validation sélectionnées



pig cerebellum tissue were subjected to SDS PAGE followed by western blot with 67010-1-Ig (RASGRF 1 antibody) at dilution of 1:3000 incubated at room temperature for 1.5 hours.