

À des fins de recherche uniquement

# Anticorps Monoclonal anti-ICAM4

Numéro de catalogue: 67014-1-Ig **1 Publications**



## Informations de base

Numéro de catalogue:	67014-1-Ig	Numéro d'acquisition GenBank:	BC029364	Méthode de purification:	Purification par protéine A
Taille:	150ul , Concentration: 2200 µg/ml by Nanodrop and 1000 µg/ml by Bradford method using BSA as the standard;	Identification du gène (NCBI):	3386	CloneNo.:	3A9B9
Hôte:	Mouse	Nom complet:	intercellular adhesion molecule 4 (Landsteiner-Wiener blood group)	Dilutions recommandées:	WB 1:20000-1:100000 IHC 1:2500-1:10000 IF 1:200-1:800
Isotype:	IgG1	MW calculé	271 aa, 29 kDa		
Immunogen Catalog Number:	AG27628	MW observés:	42 kDa		

## Applications

### Applications testées:

IF, IHC, WB, ELISA

### Demandes citées:

WB

### Spécificité de l'espèce:

Humain

### Espèces citées:

Humain

**Remarque-IHC: il est suggéré de démasquer l'antigène avec un tampon de TE buffer pH 9,0; (\*) A défaut, 'le démasquage de l'antigène peut être 'effectué avec un tampon citrate pH 6,0.**

### Contrôles positifs:

WB : tissu sanguin humain, globules rouges humains

IHC : tissu splénique humain, tissu de côlon humain, tissu placentaire humain

IF : tissu splénique de souris,

## Informations générales

This gene encodes the Landsteiner-Wiener (LW) blood group antigen(s) that belongs to the immunoglobulin (Ig) superfamily, and that shares similarity with the intercellular adhesion molecule (ICAM) protein family. The protein migrate as a 42 kDa glycoprotein on SDS PAGE. Alternative splicing results in multiple transcript variants encoding distinct isoforms.

## Publications notables

Autrice	Pubmed ID	Journal	Application
Nuo Wang	33877318	J Clin Endocrinol Metab	WB

## Stockage

### Stockage:

Stocker à -20°C. Stable pendant un an après l'expédition.

### Tampon de stockage:

PBS avec azoture de sodium à 0,02 % et glycérol à 50 % pH 7,3

L'aliquotage n'est pas nécessaire pour le stockage à -20C

\*\*\* Les 20ul contiennent 0,1% de BSA.

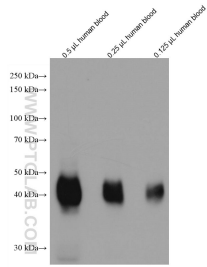
For technical support and original validation data for this product please contact:

T: 1 (888) 4PTGLAB (1-888-478-4522) (toll free in USA), or 1(312) 455-8498 (outside USA)

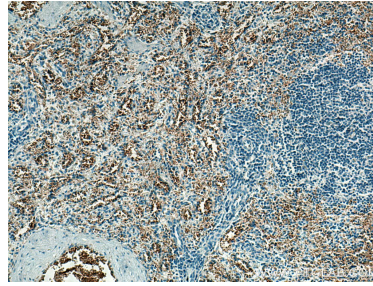
E: proteintech@ptglab.com  
W: ptglab.com

This product is exclusively available under Proteintech Group brand and is not available to purchase from any other manufacturer.

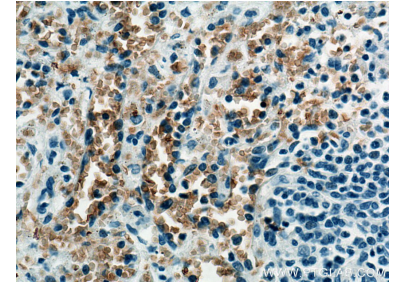
## Données de validation sélectionnées



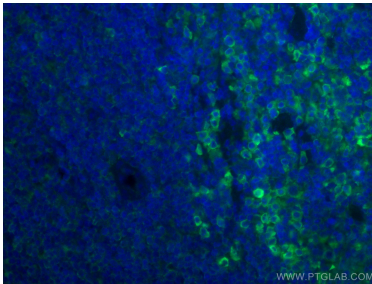
Different amount of human blood lysates were subjected to SDS PAGE followed by western blot with 67014-1-Ig (ICAM4 antibody) at dilution of 1:50000 incubated at room temperature for 1.5 hours.



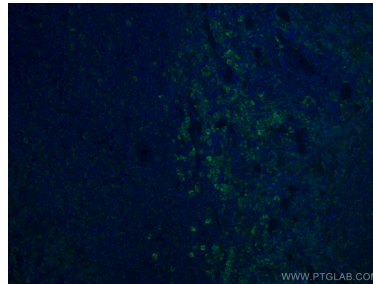
Immunohistochemical analysis of paraffin-embedded human spleen tissue slide using 67014-1-Ig (ICAM4 antibody) at dilution of 1:5000 (under 10x lens). Heat mediated antigen retrieval with Tris-EDTA buffer (pH 9.0).



Immunohistochemical analysis of paraffin-embedded human spleen tissue slide using 67014-1-Ig (ICAM4 antibody) at dilution of 1:5000 (under 40x lens). Heat mediated antigen retrieval with Tris-EDTA buffer (pH 9.0).



Immunofluorescent analysis of (4% PFA) fixed mouse spleen tissue using ICAM4 antibody (67014-1-Ig, Clone: 3A9B9) at dilution of 1:400 and CoraLite®488-Conjugated AffiniPure Goat Anti-Mouse IgG(H+L).



Immunofluorescent analysis of (4% PFA) fixed mouse spleen tissue using ICAM4 antibody (67014-1-Ig, Clone: 3A9B9) at dilution of 1:400 and CoraLite®488-Conjugated AffiniPure Goat Anti-Mouse IgG(H+L).