

À des fins de recherche uniquement

Anticorps Monoclonal anti-MAP2

Numéro de catalogue: 67015-1-Ig **12 Publications**



Informations de base

Numéro de catalogue: 67015-1-Ig	Numéro d'acquisition GenBank: BC038857	Méthode de purification: Purification par protéine A
Taille: 150ul, Concentration: 1700 µg/ml by Nanodrop and 1000 µg/ml by Bradford method using BSA as the standard;	Identification du gène (NCBI): 4133	CloneNo.: 1C3E6
Hôte: Mouse	Nom complet: microtubule-associated protein 2	Dilutions recommandées: IHC 1:1000-1:4000 IF 1:200-1:800
Isotype: IgG2b	MW calculé 200 kDa	
Immunogen Catalog Number: AG11349		

Applications

Applications testées:

FC, IF, IHC, ELISA

Demandes citées:

IF, IP, WB

Spécificité de l'espèce:

Humain, rat, souris

Espèces citées:

rat, souris

Remarque-IHC: il est suggéré de démasquer l'antigène avec un tampon de TE buffer pH 9,0; (*) A défaut, 'le démasquage de l'antigène peut être effectué avec un tampon citrate pH 6,0.

Contrôles positifs:

IHC : tissu cérébral de souris, tissu cérébral de rat, tissu cérébral humain, tissu de cervelet de rat, tissu de cervelet de souris

IF : tissu cérébral de rat, tissu cérébral de souris

Informations générales

MAP2 (microtubule-associated protein 2) is a cytoskeleton protein abundant in brain and has important role in neuronal morphogenesis. Multiple high molecular weight (MW) and low molecular weight (MW) MAP2 isoforms are expressed within axons, dendrites, and cell bodies. The expression of MAP2 is regulated in both a tissue- and developmentally specific manner. MAP2 antibodies have been widely used to mark the neuron or dendrite formation.

Publications notables

Autrice	Pubmed ID	Journal	Application
Lei-Lei Wang	34582787	Cell	IF
Zihu Tan	34025340	Front Neurosci	IF
Tuancheng Feng	35287730	Acta Neuropathol Commun	IF

Stockage

Stockage:

Stocker à -20°C. Stable pendant un an après l'expédition.

Tampon de stockage:

PBS avec azoture de sodium à 0,02 % et glycérol à 50 % pH 7,3

L'aliquotage n'est pas nécessaire pour le stockage à -20C

*** Les 20ul contiennent 0,1% de BSA.

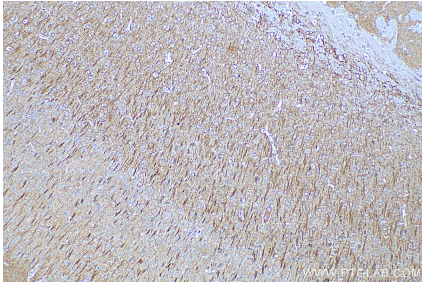
For technical support and original validation data for this product please contact:

T: 1 (888) 4PTGLAB (1-888-478-4522) (toll free in USA), or 1(312) 455-8498 (outside USA)

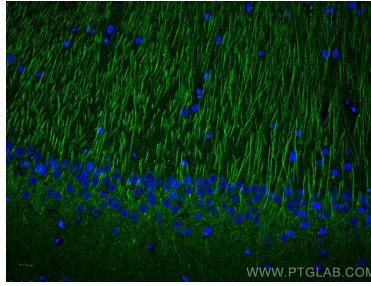
E: proteintech@ptglab.com
W: ptglab.com

This product is exclusively available under Proteintech Group brand and is not available to purchase from any other manufacturer.

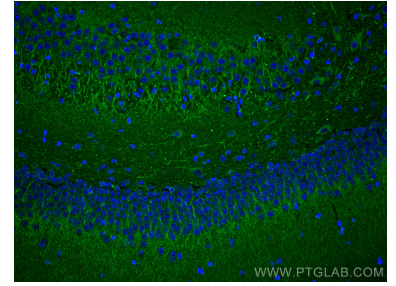
Données de validation sélectionnées



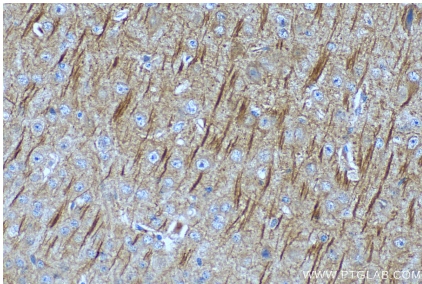
Immunohistochemical analysis of paraffin-embedded mouse brain tissue slide using 67015-1-Ig (MAP2 antibody) at dilution of 1:2000 (under 10x lens). Heat mediated antigen retrieval with Tris-EDTA buffer (pH 9.0).



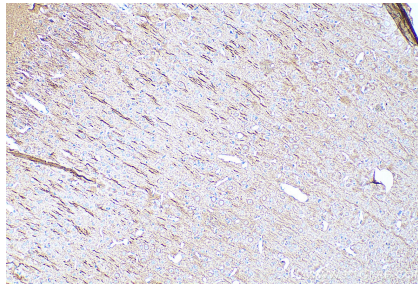
Immunofluorescent analysis of (4% PFA) fixed rat brain tissue using MAP2 antibody (67015-1-Ig, Clone: 1C3E6) at dilution of 1:400 and CoraLite®488-Conjugated AffiniPure Goat Anti-Mouse IgG(H+L).



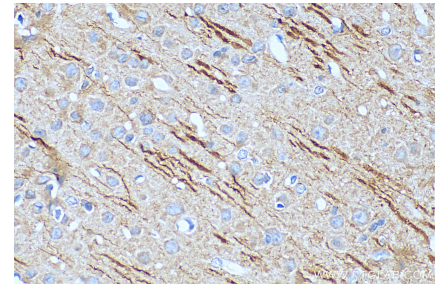
Immunofluorescent analysis of (4% PFA) fixed mouse brain tissue using MAP2 antibody (67015-1-Ig, Clone: 1C3E6) at dilution of 1:400 and CoraLite®488-Conjugated AffiniPure Goat Anti-Mouse IgG(H+L).



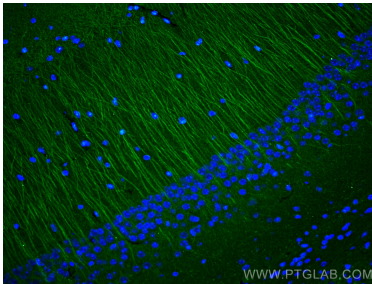
Immunohistochemical analysis of paraffin-embedded mouse brain tissue slide using 67015-1-Ig (MAP2 antibody) at dilution of 1:2000 (under 40x lens). Heat mediated antigen retrieval with Tris-EDTA buffer (pH 9.0).



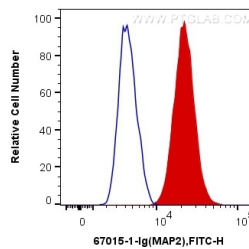
Immunohistochemical analysis of paraffin-embedded rat brain tissue slide using 67015-1-Ig (MAP2 antibody) at dilution of 1:2000 (under 10x lens). Heat mediated antigen retrieval with Tris-EDTA buffer (pH 9.0).



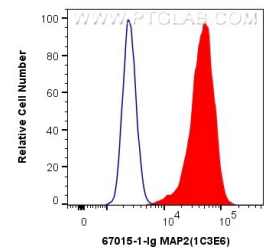
Immunohistochemical analysis of paraffin-embedded rat brain tissue slide using 67015-1-Ig (MAP2 antibody) at dilution of 1:2000 (under 40x lens). Heat mediated antigen retrieval with Tris-EDTA buffer (pH 9.0).



Immunofluorescent analysis of (4% PFA) fixed mouse brain tissue using MAP2 antibody (67015-1-Ig, Clone: 1C3E6) at dilution of 1:400 and CoraLite®488-Conjugated AffiniPure Goat Anti-Mouse IgG(H+L).



1X10⁶ SH-SY5Y cells were intracellularly stained with 0.2 ug Anti-Human MAP2 (67015-1-Ig, Clone:1C3E6) and CoraLite®488-Conjugated AffiniPure Goat Anti-Mouse IgG(H+L) at dilution 1:1000 (red), or 0.2 ug Control Antibody. Cells were fixed with 4% PFA and permeabilized with Flow Cytometry Perm Buffer (PF00011-C).



1X10⁶ Neuro-2a cells were intracellularly stained with 0.4 ug Anti-Human MAP2 (67015-1-Ig, Clone:1C3E6) and CoraLite®488-Conjugated AffiniPure Goat Anti-Mouse IgG(H+L) at dilution 1:1000 (red), or 0.4 ug Mouse IgG2b Isotype Control (MPC-11) (65128-1-Ig, Clone: MPC-11) (blue). Cells were fixed with 4% PFA and permeabilized with Flow Cytometry Perm Buffer (PF00011-C).