

À des fins de recherche uniquement

Anticorps Monoclonal anti-LGMN

Numéro de catalogue: 67017-1-Ig **5 Publications**



Informations de base

Numéro de catalogue: 67017-1-Ig	Numéro d'acquisition GenBank: BC003061	Méthode de purification: Purification par protéine G
Taille: 150ul, Concentration: 2400 µg/ml by Nanodrop and 1000 µg/ml by Bradford method using BSA as the standard;	Identification du gène (NCBI): 5641	CloneNo.: 1F2B12
Hôte: Mouse	Nom complet: legumain	Dilutions recommandées: WB 1:5000-1:50000 IHC 1:150-1:600 IF 1:200-1:800
Isotype: IgG1	MW calculé 49 kDa	
Immunogen Catalog Number: AG7218	MW observés: 36 kDa	

Applications

Applications testées:

IF, IHC, WB, ELISA

Demandes citées:

IHC, WB

Spécificité de l'espèce:

Humain, porc

Espèces citées:

Humain, souris

Remarque-IHC: il est suggéré de démasquer l'antigène avec un tampon de TE buffer pH 9,0; (*) A défaut, 'le démasquage de l'antigène peut être 'effectué avec un tampon citrate pH 6,0.

Contrôles positifs:

WB : SK-BR-3 cells, cellules ATDC-5, cellules HEK-293, cellules HeLa, cellules JAR, cellules Jurkat, cellules LNCaP, cellules MCF-7, cellules NCCIT, tissu placentaire humain, tissu rénal de porc

IHC : tissu rénal humain, tissu placentaire humain

IF : tissu rénal humain,

Informations générales

LGMN (Legumain), also known as asparaginyl endopeptidase or AEP, is a broadly expressed lysosomal cysteine endopeptidase that belongs to peptidase family C13 and specifically hydrolyzes substrate asparaginyl bonds (PMID: 9065484). LGMN directly regulates diverse physiological and pathological processes by remodeling tissue-specific targets (PMID: 25205715, 21292981, 18820679). In addition, LGMN indirectly contributes to atherosclerotic plaque instability through activation of cathepsin L in the arterial ECM (PMID: 19671471, 18377911). LGMN is secreted as inactive prolegumain (56 kDa) and processed into enzymatically active 46 and 36 kDa forms, as well as a 17 kDa enzymatically inactive C-terminal fragment (PMID: 28162997, PMID: 19671471).

Publications notables

Autrice	Pubmed ID	Journal	Application
Yue Qiu	33253806	J Control Release	WB
Hongbin Wang	31892854	Int J Biol Sci	WB
Zixue Xuan	36542317	J Mol Neurosci	IHC

Stockage

Stockage:

Stocker à -20°C. Stable pendant un an après l'expédition.

Tampon de stockage:

PBS avec azoture de sodium à 0,02 % et glycérol à 50 % pH 7,3

L'aliquotage n'est pas nécessaire pour le stockage à -20C

*** Les 20ul contiennent 0,1% de BSA.

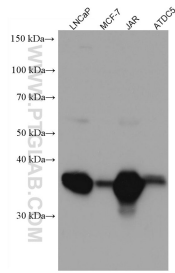
For technical support and original validation data for this product please contact:

T: 1 (888) 4PTGLAB (1-888-478-4522) (toll free in USA), or 1(312) 455-8498 (outside USA)

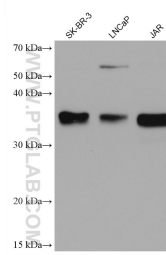
E: proteintech@ptglab.com
W: ptglab.com

This product is exclusively available under Proteintech Group brand and is not available to purchase from any other manufacturer.

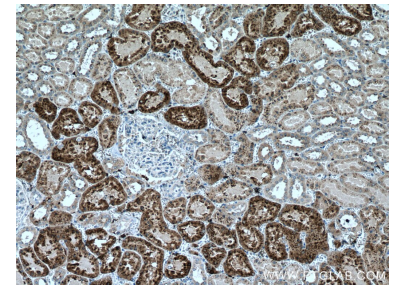
Données de validation sélectionnées



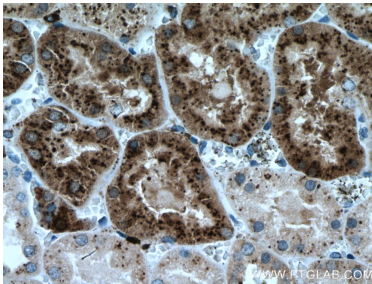
Various lysates were subjected to SDS PAGE followed by western blot with 67017-1-Ig (LGMN antibody) at dilution of 1:5000 incubated at room temperature for 1.5 hours.



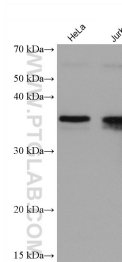
Various lysates were subjected to SDS PAGE followed by western blot with 67017-1-Ig (LGMN antibody) at dilution of 1:20000 incubated at room temperature for 1.5 hours.



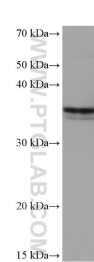
Immunohistochemical analysis of paraffin-embedded human kidney tissue slide using 67017-1-Ig (LGMN antibody) at dilution of 1:300 (under 10x lens. Heat mediated antigen retrieval with Tris-EDTA buffer (pH 9.0).



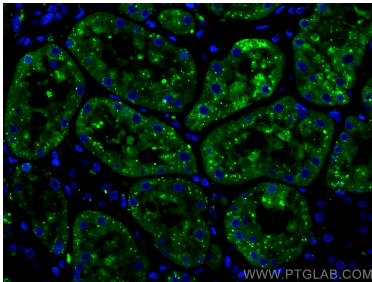
Immunohistochemical analysis of paraffin-embedded human kidney tissue slide using 67017-1-Ig (LGMN antibody) at dilution of 1:300 (under 40x lens. Heat mediated antigen retrieval with Tris-EDTA buffer (pH 9.0).



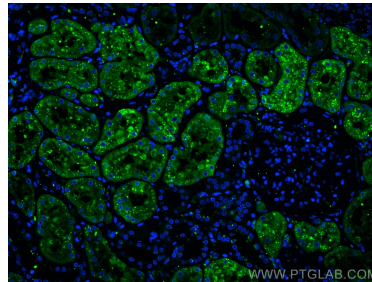
Various lysates were subjected to SDS PAGE followed by western blot with 67017-1-Ig (LGMN antibody) at dilution of 1:20000 incubated at room temperature for 1.5 hours.



MCF-7 cells were subjected to SDS PAGE followed by western blot with 67017-1-Ig (LGMN antibody) at dilution of 1:20000 incubated at room temperature for 1.5 hours.



Immunofluorescent analysis of (4% PFA) fixed human kidney tissue using LGMN antibody (67017-1-Ig, Clone: 1F2B12) at dilution of 1:400 and CoraLite®488-Conjugated AffiniPure Goat Anti-Mouse IgG(H+L).



Immunofluorescent analysis of (4% PFA) fixed human kidney tissue using LGMN antibody (67017-1-Ig, Clone: 1F2B12) at dilution of 1:400 and CoraLite®488-Conjugated AffiniPure Goat Anti-Mouse IgG(H+L).