

À des fins de recherche uniquement

Anticorps Monoclonal anti-TIMELESS



Numéro de catalogue: 67022-1-Ig **1 Publications**

Informations de base

Numéro de catalogue: 67022-1-Ig	Numéro d'acquisition GenBank: BC050557	Méthode de purification: Purification par protéine A
Taille: 150ul , Concentration: 2200 µg/ml by Nanodrop and 1000 µg/ml by Bradford method using BSA as the standard;	Identification du gène (NCBI): 8914	CloneNo.: 1B6G3
Hôte: Mouse	Nom complet: timeless homolog (Drosophila)	Dilutions recommandées: WB 1:5000-1:50000
Isotype: IgG1	MW calculé: 139 kDa	
Immunogen Catalog Number: AG6283	MW observés: 140 kDa	

Applications

Applications testées: FC, WB, ELISA	Contrôles positifs: WB : cellules HeLa, cellules A549, cellules HEK-293, cellules HSC-T6, cellules JAR, cellules Jurkat, cellules K-562, cellules NIH/3T3, cellules U2OS
Demandes citées: WB	
Spécificité de l'espèce: Humain, rat, souris	
Espèces citées: canin, Humain	

Informations générales

TIMELESS1 (TIM1) gene encodes protein timeless homolog belonging to timeless family. TIM1 is localized in nucleus and regulated by cell cycle. It expresses high levels in S, G2 and M phases, and low in G0 and G1 phases. TIM1 is involved in the circadian rhythm autoregulatory loop and is a crucial component of the circadian core oscillator, which includes the CRY proteins, CLOCK, NPAS2, etc. It is also involved in cell survival after DNA damage or replication stress and reported to play important role in epithelial cell morphogenesis and formation of branching tubules.

Publications notables

Autrice	Pubmed ID	Journal	Application
Houqing Yin	37433364	Eur J Pharmacol	WB

Stockage

Stockage:
Stocker à -20°C. Stable pendant un an après l'expédition.
Tampon de stockage:
PBS avec azoture de sodium à 0,02 % et glycérol à 50 % pH 7,3
L'aliquotage n'est pas nécessaire pour le stockage à -20C

***** Les 20ul contiennent 0,1% de BSA.**

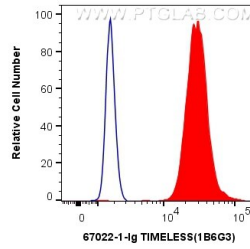
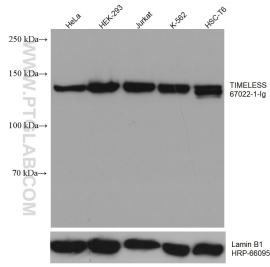
For technical support and original validation data for this product please contact:

T: 1 (888) 4PTGLAB (1-888-478-4522) (toll free in USA), or 1(312) 455-8498 (outside USA)

E: proteintech@ptglab.com
W: ptglab.com

This product is exclusively available under Proteintech Group brand and is not available to purchase from any other manufacturer.

Données de validation sélectionnées



Various lysates were subjected to SDS PAGE followed by western blot with 67022-1-Ig (TIMELESS antibody) at dilution of 1:10000 incubated at room temperature for 1.5 hours. The membrane was stripped and reblotted with HRP-conjugated Lamin B1 Monoclonal antibody (HRP-66095) as loading control.

1×10^6 HEK-293 cells were intracellularly stained with 0.4 μ g Anti-Human TIMELESS (67022-1-Ig, Clone:1B6G3) and CoraLite[®]488-Conjugated AffiniPure Goat Anti-Mouse IgG(H+L) at dilution 1:1000 (red), or 0.4 μ g Control Antibody. Cells were fixed and permeabilized with Transcription Factor Staining Buffer Kit (PF00011).