

À des fins de recherche uniquement

Anticorps Monoclonal anti-CRK

Numéro de catalogue: 67035-1-Ig



Informations de base

Numéro de catalogue: 67035-1-Ig	Numéro d'acquisition GenBank: BC008506	Méthode de purification: Purification par protéine G
Taille: 150ul, Concentration: 1600 µg/ml by Nanodrop and 1000 µg/ml by Bradford method using BSA as the standard;	Identification du gène (NCBI): 1398	CloneNo.: 2B7E1
Hôte: Mouse	Nom complet: v-crk sarcoma virus CT10 oncogene homolog (avian)	Dilutions recommandées: WB 1:1000-1:6000
Isotype: IgG1	MW calculé: 34 kDa	
Immunogen Catalog Number: AG28793	MW observés: 34 kDa	

Applications

Applications testées:
WB, ELISA

Spécificité de l'espèce:
Humain, rat, souris

Contrôles positifs:

WB : cellules HEK-293, cellules HeLa, cellules HSC-T6,
cellules Jurkat, cellules NIH/3T3, cellules RAW 264.7

Informations générales

CRK is a member of an adapter protein family that binds to several tyrosine-phosphorylated proteins. CRK has several SH2 and SH3 domains (src-homology domains) and is involved in several signaling pathways, recruiting cytoplasmic proteins in the vicinity of tyrosine kinase through SH2-phosphotyrosine interaction. The N-terminal SH2 domain of this protein functions as a positive regulator of transformation whereas the C-terminal SH3 domain functions as a negative regulator of transformation.

Stockage

Stockage:
Stocker à -20 °C
Tampon de stockage:
PBS avec azoture de sodium à 0,02 % et glycérol à 50 % pH 7,3
L'aliquotage n'est pas nécessaire pour le stockage à -20C

*** Les 20ul contiennent 0,1% de BSA.

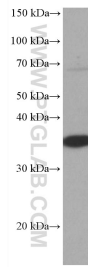
For technical support and original validation data for this product please contact:

T: 1 (888) 4PTGLAB (1-888-478-4522) (toll free
in USA), or 1(312) 455-8498 (outside USA)

E: proteintech@ptglab.com
W: ptglab.com

This product is exclusively available under Proteintech Group brand and is not available to purchase from any other manufacturer.

Données de validation sélectionnées



HEK-293 cells were subjected to SDS PAGE followed by western blot with 67035-1-Ig (CRK antibody) at dilution of 1:3000 incubated at room temperature for 1.5 hours.