

À des fins de recherche uniquement

# Anticorps Monoclonal anti-KDM1

Numéro de catalogue: 67037-1-Ig **1 Publications**



## Informations de base

Numéro de catalogue: 67037-1-Ig	Numéro d'acquisition GenBank: BC040194	Méthode de purification: Purification par protéine G
Taille: 150ul, Concentration: 1500 µg/ml by Nanodrop and 1000 µg/ml by Bradford method using BSA as the standard;	Identification du gène (NCBI): 23028	CloneNo.: 2F10A12
Hôte: Mouse	Nom complet: lysine (K)-specific demethylase 1	Dilutions recommandées: WB 1:5000-1:50000 IHC 1:500-1:2000
Isotype: IgG1	MW calculé: 876 aa, 95 kDa	
Immunogen Catalog Number: AG14778	MW observés: 110 kDa	

## Applications

### Applications testées:

IHC, WB, ELISA

### Demandes citées:

WB

### Spécificité de l'espèce:

Humain, rat, souris

### Espèces citées:

Humain

**Remarque-IHC: il est suggéré de démasquer l'antigène avec un tampon de TE buffer pH 9,0; (\*) A défaut, 'le démasquage de l'antigène peut être effectué avec un tampon citrate pH 6,0.**

### Contrôles positifs:

WB : cellules HEK-293, cellules 4T1, cellules HeLa, cellules HepG2, cellules HSC-T6, cellules Jurkat, cellules MCF-7, cellules NIH/3T3, cellules PC-12, cellules RAW 264.7

IHC : tissu de cancer du côlon humain, tissu de cancer de la prostate humaine, tissu de cancer du foie humain, tissu de cancer du poumon humain

## Informations générales

Lysine specific demethylase 1 (LSD1/BHC110/KIAA0601/p110b/AOF2/KDM1) is an amine oxidase that catalyzes histone demethylation via a flavin adenine dinucleotide (FAD)-dependent oxidative reaction (PMID:19703393). This protein belongs to the flavin monoamine oxidase family. Its structure and function is conserved from yeast to human and it is typically associated to CoREST, a corepressor protein, and histone deacetylases HDAC1 and HDAC2. Human LSD1 consists of 852 amino acids and comprises an N-terminal SWIRM domain, involved in protein interactions, and a C-terminal amine oxidase domain, which contains an insertion that forms the CoREST interacting site (the so-called tower domain) (PMID:20164337). It has 2 isoforms produced by alternative splicing with the calculated molecular mass of 93-95 kDa and apparent molecular mass of 110 kDa.

## Publications notables

Autrice	Pubmed ID	Journal	Application
Yanhua Pu	33811891	Life Sci	WB

## Stockage

### Stockage:

Stocker à -20 °C

### Tampon de stockage:

PBS avec azoture de sodium à 0,02 % et glycérol à 50 % pH 7,3

L'aliquotage n'est pas nécessaire pour le stockage à -20C

**\*\*\* Les 20ul contiennent 0,1% de BSA.**

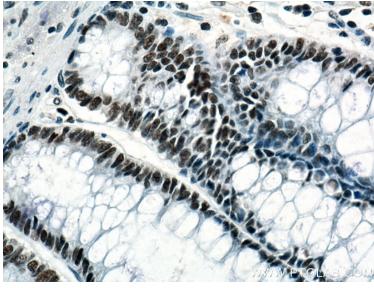
For technical support and original validation data for this product please contact:

T: 1 (888) 4PTGLAB (1-888-478-4522) (toll free in USA), or 1(312) 455-8498 (outside USA)

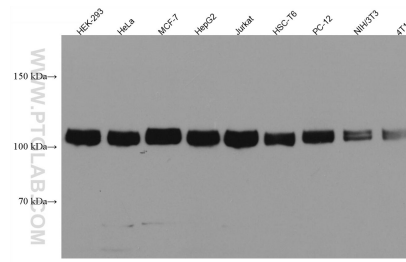
E: proteintech@ptglab.com  
W: ptglab.com

**This product is exclusively available under Proteintech Group brand and is not available to purchase from any other manufacturer.**

## Données de validation sélectionnées



Immunohistochemical analysis of paraffin-embedded human colon cancer tissue slide using 67037-1-Ig (KDM1 antibody) at dilution of 1:1000 (under 40x lens). Heat mediated antigen retrieval with Tris-EDTA buffer (pH 9.0).



Various lysates were subjected to SDS PAGE followed by western blot with 67037-1-Ig (KDM1 antibody) at dilution of 1:10000 incubated at room temperature for 1.5 hours.