

À des fins de recherche uniquement

Anticorps Monoclonal anti-DNASE1L3



Numéro de catalogue: 67041-1-Ig

1 Publications

Informations de base

Numéro de catalogue: 67041-1-Ig	Numéro d'acquisition GenBank: BC015831	Méthode de purification: Purification par protéine A
Taille: 150ul , Concentration: 2100 µg/ml by Nanodrop and 1000 µg/ml by Bradford method using BSA as the standard;	Identification du gène (NCBI): 1776	CloneNo.: 1A4D4
Hôte: Mouse	Nom complet: deoxyribonuclease I-like 3	Dilutions recommandées: WB 1:500-1:2000 IHC 1:50-1:500
Isotype: IgG2a	MW calculé: 305 aa, 36 kDa	
Immunogen Catalog Number: AG28187	MW observés: 33-38 kDa	

Applications

Applications testées:

IHC, WB, ELISA

Demandes citées:

WB

Spécificité de l'espèce:

Humain, souris

Espèces citées:

Humain

Remarque-IHC: il est suggéré de démasquer l'antigène avec un tampon de TE buffer pH 9,0; (*) A défaut, 'le démasquage de l'antigène peut être effectué avec un tampon citrate pH 6,0.

Contrôles positifs:

WB : cellules HEK-293, cellules A431, cellules Daudi, cellules HepG2, cellules Jurkat, cellules K-562, cellules LNCaP, cellules Raji, cellules U2OS

IHC : tissu hépatique de souris, tissu splénique humain

Informations générales

Deoxyribonuclease 1-like 3 (DNASE1L3, DNase gamma, DNase Y, LS-DNase) is member of a DNASE1 protein family that is identified by similar biochemical properties such as Ca²⁺/Mg²⁺- dependency and an optimal pH of about 7.0 as well as by a high similarity in their nucleic acid and amino acid sequences (PMID:157967140). It is an endonuclease and cleaves double-stranded DNA (and single-stranded DNA) producing 3'-OH/5'-P ends, which is Ca²⁺/Mg²⁺-dependent and inhibited by Zn²⁺, but not by monomeric actin (PMID:9665719). In addition, it translocates from the endoplasmic reticulum to the nucleus during apoptosis (PMID: 23229555). DNASE1L3 can be located either in the cytoplasm or in the nucleus.

Publications notables

Autrice	Pubmed ID	Journal	Application
Jing Liu	34157681	Aging (Albany NY)	WB

Stockage

Stockage:

Stocker à -20°C. Stable pendant un an après l'expédition.

Tampon de stockage:

PBS avec azoture de sodium à 0,02 % et glycérol à 50 % pH 7,3

L'aliquotage n'est pas nécessaire pour le stockage à -20C

*** Les 20ul contiennent 0,1% de BSA.

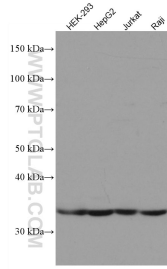
For technical support and original validation data for this product please contact:

T: 1 (888) 4PTGLAB (1-888-478-4522) (toll free in USA), or 1(312) 455-8498 (outside USA)

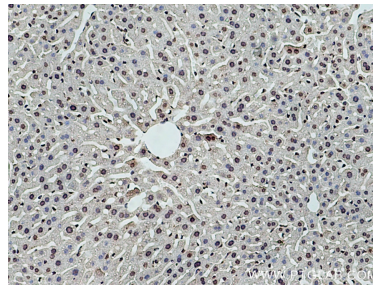
E: proteintech@ptglab.com
W: ptglab.com

This product is exclusively available under Proteintech Group brand and is not available to purchase from any other manufacturer.

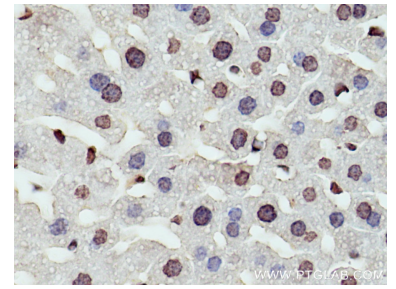
Données de validation sélectionnées



Various lysates were subjected to SDS PAGE followed by western blot with 67041-1-Ig (DNASE1L3 antibody) at dilution of 1:1000 incubated at room temperature for 1.5 hours.



Immunohistochemical analysis of paraffin-embedded mouse liver tissue slide using 67041-1-Ig (DNASE1L3 antibody) at dilution of 1:200 (under 10x lens). Heat mediated antigen retrieval with Tris-EDTA buffer (pH 9.0).



Immunohistochemical analysis of paraffin-embedded mouse liver tissue slide using 67041-1-Ig (DNASE1L3 antibody) at dilution of 1:200 (under 40x lens). Heat mediated antigen retrieval with Tris-EDTA buffer (pH 9.0).