

À des fins de recherche uniquement

Anticorps Monoclonal anti-COMMD5



Numéro de catalogue: 67043-1-Ig **2 Publications**

Informations de base

Numéro de catalogue: 67043-1-Ig	Numéro d'acquisition GenBank: BC003055	Méthode de purification: Purification par protéine A
Taille: 150ul , Concentration: 2200 µg/ml by Nanodrop and 1000 µg/ml by Bradford method using BSA as the standard;	Identification du gène (NCBI): 28991	CloneNo.: 1E10G6
Hôte: Mouse	Nom complet: COMM domain containing 5	Dilutions recommandées: WB 1:2000-1:6000
Isotype: IgG2a	MW calculé: 25 kDa	
Immunogen Catalog Number: AG18464	MW observés: 15 kDa	

Applications

Applications testées: WB, ELISA	Contrôles positifs: WB : tissu cardiaque humain, cellules HEK-293, cellules MCF-7, tissu cardiaque de rat
Demandes citées: WB	
Spécificité de l'espèce: Humain, rat	
Espèces citées: Humain	

Informations générales

COMM domain containing 5 (COMMD5, synonyms: HCARG, HT002) is a hypertension-related calcium-regulated gene. COMMD5 is negatively regulated by extracellular calcium concentration, and its basal mRNA levels were higher in hypertensive animals. Tissue distribution of COMMD5 shows a preponderance in the heart, stomach, jejunum, kidney (tubular fraction), liver, and adrenal gland (mainly in the medulla). COMMD5 mRNA is significantly more expressed in adult than in fetal organs, and its levels are decreased in tumors and cancerous cell lines. COMMD5 protein has no transmembrane domain, but contains 67% -helix content, a calcium-binding site, four putative "leucine zipper" motifs, and a nuclear receptor-binding domain. At the subcellular level, COMMD5 shows a nuclear localization.

Publications notables

Autrice	Pubmed ID	Journal	Application
Jianyun Liu	37543430	Aging (Albany NY)	WB
Michael D Healy	37172566	Cell	WB

Stockage

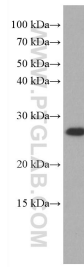
Stockage:
Stocker à -20 °C.
Tampon de stockage:
PBS avec azoture de sodium à 0,02 % et glycérol à 50 % pH 7,3
L'aliquotage n'est pas nécessaire pour le stockage à -20C

***** Les 20ul contiennent 0,1% de BSA.**

For technical support and original validation data for this product please contact:
T: 1 (888) 4PTGLAB (1-888-478-4522) (toll free in USA), or 1(312) 455-8498 (outside USA)
E: proteintech@ptglab.com
W: ptglab.com

This product is exclusively available under Proteintech Group brand and is not available to purchase from any other manufacturer.

Données de validation sélectionnées



human heart tissue were subjected to SDS PAGE followed by western blot with 67043-1-Ig (COMMD5 antibody) at dilution of 1:5000 incubated at room temperature for 1.5 hours.