

À des fins de recherche uniquement

Anticorps Monoclonal anti-CYP27A1



Numéro de catalogue: 67045-1-Ig

Phare

3 Publications

Informations de base

Numéro de catalogue: 67045-1-Ig	Numéro d'acquisition GenBank: BC051851	Méthode de purification: Purification par protéine G
Taille: 150ul , Concentration: 1000 µg/ml by Bradford method using BSA as the standard;	Identification du gène (NCBI): 1593	CloneNo.: 3G3F7
Hôte: Mouse	Nom complet: cytochrome P450, family 27, subfamily A, polypeptide 1	Dilutions recommandées: WB 1:2000-1:10000 IHC 1:250-1:1000 IF 1:200-1:800
Isotype: IgG1	MW calculé 60 kDa	
Immunogen Catalog Number: AG7746	MW observés: 54-60 kDa	

Applications

Applications testées:

IF, IHC, WB, ELISA

Demandes citées:

WB

Spécificité de l'espèce:

Humain, rat, souris

Espèces citées:

Humain, souris

Remarque-IHC: il est suggéré de démasquer l'antigène avec un tampon de TE buffer pH 9,0; (*) A défaut, 'le démasquage de l'antigène peut être 'effectué avec un tampon citrate pH 6,0.

Contrôles positifs:

WB : cellules Caco-2, cellules HepG2, cellules HT-29, tissu hépatique de rat

IHC : tissu de cancer du foie humain,

IF : tissu de cancer du foie humain,

Informations générales

Publications notables

Autrice	Pubmed ID	Journal	Application
Jinyan Xie	36604506	Nat Microbiol	WB
Xiaoxi Li	35500802	J Ethnopharmacol	WB
Lisha Mou	36936948	Front Immunol	WB

Stockage

Stockage:

Stocker à -20°C. Stable pendant un an après l'expédition.

Tampon de stockage:

PBS avec azoture de sodium à 0,02 % et glycérol à 50 % pH 7,3

L'aliquotage n'est pas nécessaire pour le stockage à -20C

*** Les 20ul contiennent 0,1% de BSA.

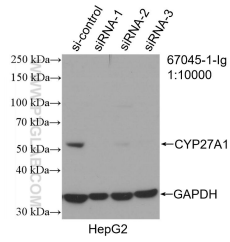
For technical support and original validation data for this product please contact:

T: 1 (888) 4PTGLAB (1-888-478-4522) (toll free
in USA), or 1(312) 455-8498 (outside USA)

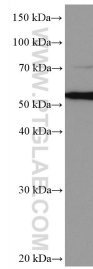
E: proteintech@ptglab.com
W: ptglab.com

This product is exclusively available under Proteintech Group brand and is not available to purchase from any other manufacturer.

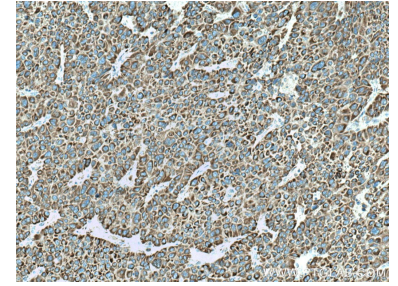
Données de validation sélectionnées



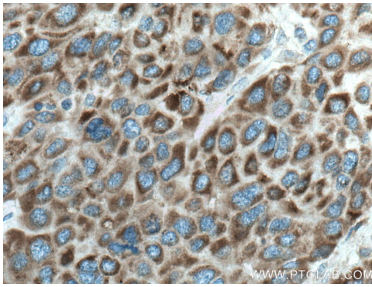
WB result of CYP27A1 antibody (67045-1-Ig; 1:10000; incubated at room temperature for 1.5 hours) with sh-Control and sh-CYP27A1 transfected HepG2 cells.



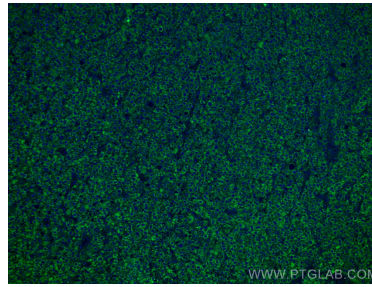
Caco-2 cells were subjected to SDS PAGE followed by western blot with 67045-1-Ig (CYP27A1 antibody) at dilution of 1:5000 incubated at room temperature for 1.5 hours.



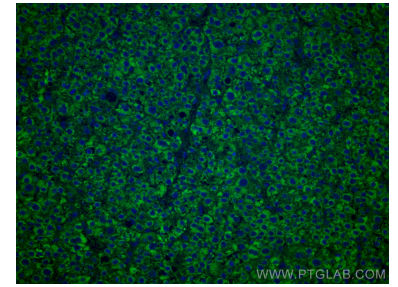
Immunohistochemical analysis of paraffin-embedded human liver cancer tissue slide using 67045-1-Ig (CYP27A1 antibody) at dilution of 1:500 (under 10x lens). Heat mediated antigen retrieval with Tris-EDTA buffer (pH 9.0).



Immunohistochemical analysis of paraffin-embedded human liver cancer tissue slide using 67045-1-Ig (CYP27A1 antibody) at dilution of 1:500 (under 40x lens). Heat mediated antigen retrieval with Tris-EDTA buffer (pH 9.0).



Immunofluorescent analysis of (4% PFA) fixed human liver cancer tissue using CYP27A1 antibody (67045-1-Ig, Clone: 3G3F7) at dilution of 1:400 and CoraLite®488-Conjugated AffiniPure Goat Anti-Mouse IgG(H+L).



Immunofluorescent analysis of (4% PFA) fixed human liver cancer tissue using CYP27A1 antibody (67045-1-Ig, Clone: 3G3F7) at dilution of 1:400 and CoraLite®488-Conjugated AffiniPure Goat Anti-Mouse IgG(H+L).