

À des fins de recherche uniquement

Anticorps Monoclonal anti-Cyclin D2



Numéro de catalogue: 67048-1-Ig **4 Publications**

Informations de base

Numéro de catalogue: 67048-1-Ig	Numéro d'acquisition GenBank: BC010958	Méthode de purification: Purification par protéine A
Taille: 150ul , Concentration: 2300 µg/ml by 894 Nanodrop and 1000 µg/ml by Bradford method using BSA as the standard;	Identification du gène (NCBI): cyclin D2	CloneNo.: 1A12A8
Hôte: Mouse	MW calculé: 32 kDa	Dilutions recommandées: WB 1:1000-1:5000
Isotype: IgG2a	MW observés: 30 kDa	
Immunogen Catalog Number: AG25190		

Applications

Applications testées: WB,ELISA	Contrôles positifs: WB : cellules HEK-293, cellules Caco-2, cellules MCF-7, cellules NIH/3T3, cellules U2OS
Demandes citées: WB	
Spécificité de l'espèce: Humain, souris	
Espèces citées: Humain, souris	

Informations générales

CCND2 belongs to the highly conserved cyclin family, whose members are characterized by a dramatic periodicity in protein abundance through the cell cycle. Cyclins function as regulators of CDK kinases. CCND2 forms a complex with and functions as a regulatory subunit of CDK4 or CDK6, whose activity is required for cell cycle G1/S transition. CCND2 has been shown to interact with and be involved in the phosphorylation of tumor suppressor protein Rb. High level expression of CCND2 was observed in ovarian and testicular tumors.

Publications notables

Autrice	Pubmed ID	Journal	Application
Shuaishuai Zhuo	33993193	Cell Death Dis	WB
Pan Jiang	35968334	Am J Cancer Res	WB
Cunying Ma	37311811	Oncogene	WB

Stockage

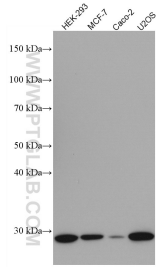
Stockage:
Stocker à -20 °C.
Tampon de stockage:
PBS avec azoture de sodium à 0,02 % et glycérol à 50 % pH 7,3
L'aliquotage n'est pas nécessaire pour le stockage à -20C

***** Les 20ul contiennent 0,1% de BSA.**

For technical support and original validation data for this product please contact:
T: 1 (888) 4PTGLAB (1-888-478-4522) (toll free in USA), or 1(312) 455-8498 (outside USA)
E: proteintech@ptglab.com
W: ptglab.com

This product is exclusively available under Proteintech Group brand and is not available to purchase from any other manufacturer.

Données de validation sélectionnées



Various lysates were subjected to SDS PAGE followed by western blot with 67048-1-Ig (CCND2 antibody) at dilution of 1:2500 incubated at room temperature for 1.5 hours.