

À des fins de recherche uniquement

Anticorps Monoclonal anti-C1QA

Numéro de catalogue: 67063-1-Ig **3 Publications**



Informations de base

Numéro de catalogue: 67063-1-Ig	Numéro d'acquisition GenBank: BC030153	Méthode de purification: Purification par protéine G
Taille: 150ul , Concentration: 500 µg/ml by Bradford method using BSA as the standard;	Identification du gène (NCBI): 712	CloneNo.: 1B10E3
Hôte: Mouse	Nom complet: complement component 1, q subcomponent, A chain	Dilutions recommandées: WB 1:5000-1:50000 IHC 1:500-1:2000 IF 1:200-1:800
Isotype: IgG1	MW calculé: 245 aa, 26 kDa	
Immunogen Catalog Number: AG28622	MW observés: 30 kDa	

Applications

Applications testées: IF, IHC, WB, ELISA	Contrôles positifs: WB : tissu plasmatique humain, tissu sanguin humain IHC : tissu hépatique humain, IF : cellules HepG2,
Demandes citées: IF, WB	
Spécificité de l'espèce: Humain	
Espèces citées: Humain	
Remarque-IHC: il est suggéré de démasquer l'antigène avec un tampon de TE buffer pH 9,0; (*) A défaut, 'le démasquage de l'antigène peut être effectué avec un tampon citrate pH 6,0.	

Informations générales

The first component of complement, C1, is a calcium-dependent complex of the 3 subcomponents C1q, C1r, and C1s. C1q is composed of 18 polypeptide chains: six A-chains, six B-chains, and six C-chains. Each chain contains a collagen-like region located near the N terminus and a C-terminal globular region. Deficiency of C1q has been associated with lupus erythematosus and glomerulonephritis. This antibody is raised against C1qA which is the A-chain polypeptide of human complement subcomponent C1q.

Publications notables

Autrice	Pubmed ID	Journal	Application
Hanji Huang	33707956	Onco Targets Ther	WB
Han Li	36611882	Cells	IF
Yangtengyu Liu	36959847	Front Pharmacol	IF

Stockage

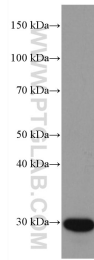
Stockage:
Stocker à -20 °C.
Tampon de stockage:
PBS avec azoture de sodium à 0,02 % et glycérol à 50 % pH 7,3
L'aliquotage n'est pas nécessaire pour le stockage à -20C

*** Les 20ul contiennent 0,1% de BSA.

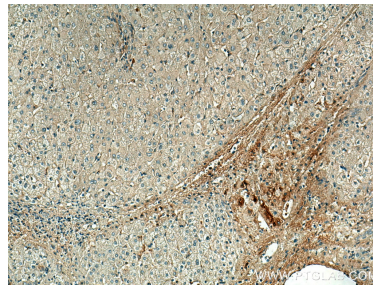
For technical support and original validation data for this product please contact:
T: 1 (888) 4PTGLAB (1-888-478-4522) (toll free in USA), or 1(312) 455-8498 (outside USA)
E: proteintech@ptglab.com
W: ptglab.com

This product is exclusively available under Proteintech Group brand and is not available to purchase from any other manufacturer.

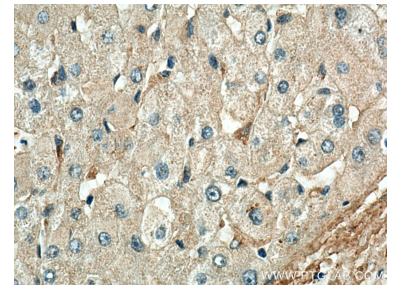
Données de validation sélectionnées



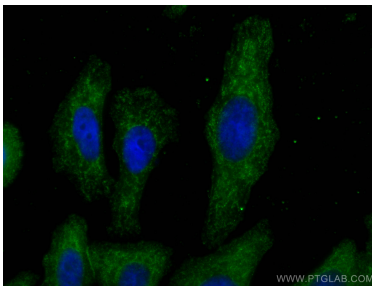
human plasma were subjected to SDS PAGE followed by western blot with 67063-1-Ig (C1QA antibody) at dilution of 1:10000 incubated at room temperature for 1.5 hours.



Immunohistochemical analysis of paraffin-embedded human liver tissue slide using 67063-1-Ig (C1QA antibody) at dilution of 1:1000 (under 10x lens). Heat mediated antigen retrieval with Tris-EDTA buffer (pH 9.0).



Immunohistochemical analysis of paraffin-embedded human liver tissue slide using 67063-1-Ig (C1QA antibody) at dilution of 1:1000 (under 40x lens). Heat mediated antigen retrieval with Tris-EDTA buffer (pH 9.0).



Immunofluorescent analysis of (-20°C Ethanol) fixed HepG2 cells using C1QA antibody (67063-1-Ig, Clone: 1B10E3) at dilution of 1:400 and CoraLite®488-Conjugated AffiniPure Goat Anti-Mouse IgG(H+L).