

À des fins de recherche uniquement

Anticorps Monoclonal anti-ATF5

Numéro de catalogue: 67066-1-Ig **2 Publications**



Informations de base

Numéro de catalogue: 67066-1-Ig	Numéro d'acquisition GenBank: BC005174	Méthode de purification: Purification par protéine A
Taille: 150ul, Concentration: 2300 µg/ml by Nanodrop and 1000 µg/ml by Bradford method using BSA as the standard;	Identification du gène (NCBI): 22809	CloneNo.: 1E5B6
Hôte: Mouse	Nom complet: activating transcription factor 5	Dilutions recommandées: WB 1:2000-1:16000
Isotype: IgG2b	MW calculé: 31 kDa	
Immunogen Catalog Number: AG7214	MW observés: 30-35 kDa	

Applications

Applications testées: WB, ELISA	Contrôles positifs: WB : cellules Jurkat, cellules A431, cellules HEK-293, cellules HeLa, cellules HT-29, cellules MCF-7, cellules MDA-MB-231, cellules SH-SY5Y, cellules T-47D
Demandes citées: WB	
Spécificité de l'espèce: Humain	
Espèces citées: Humain, souris	

Informations générales

ATF5, also named as Activating transcription factor 5, is a 282 amino acid protein, which belongs to the bZIP family. ATF5 is widely expressed with higher expression levels in liver. ATF5 is actively transported to the centrosome and accumulated in the pericentriolar material (PCM) during G1 to M phase via a microtubule-dependent mechanism. During late telophase and cytokinesis, it translocates from the centrosome to the midbody (PMID: 26213385). ATF5 as a transcription factor that either stimulates or represses gene transcription through binding of different DNA regulatory elements such as cAMP response element (CRE) (consensus: 5'-GTGACGT[AC][AG]-3'), ATF5-specific response element (ARE) (consensus: 5'-C[CT]TCT[CT]CCTT[AT]-3') but also the amino acid response element (AARE), present in many viral and cellular promoters. Critically ATF5 is involved, often in a cell type-dependent manner, in cell survival, proliferation, and differentiation (PubMed:10373550, PubMed:15358120, PubMed:21212266, PubMed:20654631).

Publications notables

Autrice	Pubmed ID	Journal	Application
Kosei Yamashita	36217717	FEBS Open Bio	WB
Meiyu Cheng	35163244	Int J Mol Sci	WB

Stockage

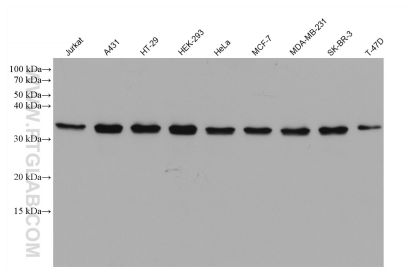
Stockage:
Stocker à -20°C. Stable pendant un an après l'expédition.
Tampon de stockage:
PBS avec azote de sodium à 0,02 % et glycérol à 50 % pH 7,3
L'aliquoteage n'est pas nécessaire pour le stockage à -20C

*** Les 20ul contiennent 0,1% de BSA.

For technical support and original validation data for this product please contact:
T: 1 (888) 4PTGLAB (1-888-478-4522) (toll free in USA), or 1(312) 455-8498 (outside USA)
E: proteintech@ptglab.com
W: ptglab.com

This product is exclusively available under Proteintech Group brand and is not available to purchase from any other manufacturer.

Données de validation sélectionnées



Various lysates were subjected to SDS PAGE followed by western blot with 67066-1-Ig (ATF5 antibody) at dilution of 1:8000 incubated at room temperature for 1.5 hours.