

À des fins de recherche uniquement

Anticorps Monoclonal anti-PPP1CA

Numéro de catalogue: 67070-1-Ig **4 Publications**



Informations de base

Numéro de catalogue: 67070-1-Ig	Numéro d'acquisition GenBank: BC001888	Méthode de purification: Purification par protéine A
Taille: 150ul , Concentration: 1000 µg/ml by Bradford method using BSA as the standard;	Identification du gène (NCBI): 5499	CloneNo.: 1C10A2
Hôte: Mouse	Nom complet: protein phosphatase 1, catalytic subunit, alpha isoform	Dilutions recommandées: WB 1:5000-1:50000
Isotype: IgG1	MW calculé 330 aa, 38 kDa	
Immunogen Catalog Number: AG28451	MW observés: 37 kDa	

Applications

Applications testées:

WB, ELISA

Demandes citées:

WB

Spécificité de l'espèce:

Humain, rat, souris

Espèces citées:

Humain, rat, souris

Contrôles positifs:

WB : cellules HeLa, cellules HEK-293, cellules Jurkat, cellules T-47D, tissu cérébral de lapin, tissu cérébral de porc, tissu cérébral de rat, tissu cérébral de souris, tissu cérébral humain foetal

Informations générales

Protein phosphatase associates with over 200 regulatory proteins to form highly specific holoenzymes which dephosphorylate hundreds of biological targets. Type 1 protein phosphatase (PP1), a serine/threonine phosphatase, is essential for cell division and participates in the regulation of glycogen metabolism, muscle contractility, and protein synthesis. Four isoforms of PP1 have been characterized: PP1 α , PP1 δ , PP1 γ 1 and PP1 γ 2 (PMID: 9835651). It has been illustrated that PP1 dephosphorylates Rb and cdc25 during mitosis (PMID: 8384581, PMID: 1392080). A cell cycle-dependent phosphorylation at Thr320 of PP1 α by cdc2 kinase inhibits PP1 α activity (PMID: 9122166).

Publications notables

Autrice	Pubmed ID	Journal	Application
Xiaozhen Gu	33080273	Neurotoxicology	WB
Jiatian Lin	33101466	Exp Ther Med	WB
Xiaoyi Xu	35501151	J Neurosci	WB

Stockage

Stockage:

Stocker à -20°C. Stable pendant un an après l'expédition.

Tampon de stockage:

PBS avec azoture de sodium à 0,02 % et glycérol à 50 % pH 7,3

L'aliquotage n'est pas nécessaire pour le stockage à -20C

***** Les 20ul contiennent 0,1% de BSA.**

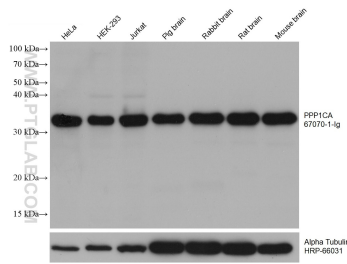
For technical support and original validation data for this product please contact:

T: 1 (888) 4PTGLAB (1-888-478-4522) (toll free in USA), or 1(312) 455-8498 (outside USA)

E: proteintech@ptglab.com
W: ptglab.com

This product is exclusively available under Proteintech Group brand and is not available to purchase from any other manufacturer.

Données de validation sélectionnées



Various lysates were subjected to SDS PAGE followed by western blot with 67070-1 Ig (PPP1CA antibody) at dilution of 1:2600 incubated at room temperature for 1.5 hours. The membrane was stripped and reblotted with HRP-conjugated Alpha Tubulin Monoclonal antibody (HRP-66031) as loading control.