

À des fins de recherche uniquement

# Anticorps Monoclonal anti-ASK1

Numéro de catalogue: 67072-1-Ig **7 Publications**



## Informations de base

Numéro de catalogue: 67072-1-Ig	Numéro d'acquisition GenBank: BC054503	Méthode de purification: Purification par protéine A
Taille: 150ul , Concentration: 1200 µg/ml by Nanodrop and 1000 µg/ml by Bradford method using BSA as the standard;	Identification du gène (NCBI): 4217	CloneNo.: 1C3A10
Hôte: Mouse	Nom complet: mitogen-activated protein kinase kinase kinase 5	Dilutions recommandées: WB 1:1000-1:6000 IHC 1:150-1:600 IF 1:50-1:500
Isotype: IgG1	MW calculé: 155 kDa	
Immunogen Catalog Number: AG5818	MW observés: 110 kDa	

## Applications

### Applications testées:

IF, IHC, WB, ELISA

### Demandes citées:

IF, WB

### Spécificité de l'espèce:

Humain, rat, souris

### Espèces citées:

Humain, rat, souris

**Remarque-IHC: il est suggéré de démasquer l'antigène avec un tampon de TE buffer pH 9,0; (\*) A défaut, 'le démasquage de l'antigène peut être 'effectué avec un tampon citrate pH 6,0.**

### Contrôles positifs:

WB : cellules HSC-T6, cellules HEK-293, cellules HeLa, cellules Jurkat, cellules MCF-7, cellules NIH/3T3

IHC : tissu de cancer du pancréas humain, tissu cardiaque de souris, tissu de cancer du poumon humain

IF : cellules RAW 264.7,

## Informations générales

ASK1(Apoptosis signal-regulating kinase 1) is also named as MAP3K5, MAPKKK5, MEKK5 and belongs to the MAP kinase kinase kinase subfamily. It is an evolutionarily conserved mitogen activated protein 3-kinase that activates both Jnk and p38 mitogen-activated protein kinases. ASK1 is activated in response to various cytotoxic stresses including TNF, Fas and reactive oxygen species (ROS) such as H<sub>2</sub>O<sub>2</sub>, and activates c-Jun NH 2-terminal kinase (JNK) and p38. 67072-1-Ig antibody detects the degraded product of ASK1 in SDS-PAGE.

## Publications notables

Autrice	Pubmed ID	Journal	Application
Xiao-Lin Jiang	36309912	Aging (Albany NY)	WB
Xiao-Lin Jiang	36465612	Front Endocrinol (Lausanne)	WB
Jiajia Duan	36633130	Mol Med Rep	IF

## Stockage

### Stockage:

Stocker à -20 °C.

### Tampon de stockage:

PBS avec azoture de sodium à 0,02 % et glycérol à 50 % pH 7,3

L'aliquotage n'est pas nécessaire pour le stockage à -20C

\*\*\* Les 20ul contiennent 0,1% de BSA.

For technical support and original validation data for this product please contact:

T: 1 (888) 4PTGLAB (1-888-478-4522) (toll free in USA), or 1(312) 455-8498 (outside USA)

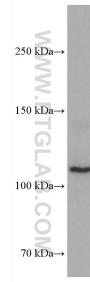
E: proteintech@ptglab.com  
W: ptglab.com

This product is exclusively available under Proteintech Group brand and is not available to purchase from any other manufacturer.

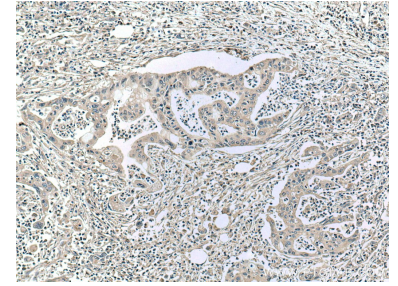
## Données de validation sélectionnées



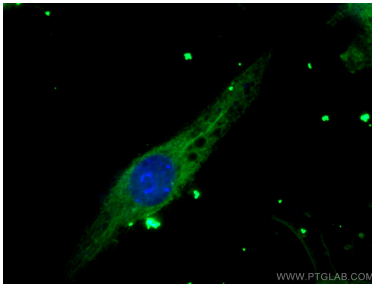
HEK-293 cells were subjected to SDS PAGE followed by western blot with 67072-1-Ig (ASK1 antibody) at dilution of 1:3000 incubated at room temperature for 1.5 hours.



HSC-T6 cells were subjected to SDS PAGE followed by western blot with 67072-1-Ig (ASK1 antibody) at dilution of 1:3000 incubated at room temperature for 1.5 hours.



Immunohistochemical analysis of paraffin-embedded human pancreas cancer tissue slide using 67072-1-Ig (ASK1 antibody) at dilution of 1:300 (under 10x lens. Heat mediated antigen retrieval with Tris-EDTA buffer (pH 9.0)).



Immunofluorescent analysis of (-20°C Ethanol) fixed RAW 264.7 cells using ASK1 antibody (67072-1-Ig, Clone: 1C3A10) at dilution of 1:200 and CoraLite®488-Conjugated AffiniPure Goat Anti-Mouse IgG(H+L).