

À des fins de recherche uniquement

Anticorps Monoclonal anti-Endoglin/CD105



Numéro de catalogue: 67075-1-Ig **4 Publications**

Informations de base

| | | |
|---|--|--|
| Numéro de catalogue: 67075-1-Ig | Numéro d'acquisition GenBank: BC014271 | Méthode de purification: Purification par protéine A |
| Taille: 150ul, Concentration: 2100 µg/ml by 2022 Nanodrop and 1000 µg/ml by Bradford method using BSA as the standard; | Identification du gène (NCBI): endoglin | CloneNo.: 2D5E8 |
| Hôte: Mouse | Nom complet: endoglin | Dilutions recommandées: WB 1:5000-1:20000 IHC 1:10000-1:40000 IF 1:5000-1:20000 |
| Isotype: IgG2b | MW calculé: 71 kDa | |
| Immunogen Catalog Number: AG27837 | MW observés: 95-100 kDa | |

Applications

Applications testées:
FC, IF, IHC, WB, ELISA

Demandes citées:
FC, IF, IHC

Spécificité de l'espèce:
Humain

Espèces citées:
Humain, rat, souris

Remarque-IHC: il est suggéré de démasquer l'antigène avec un tampon de TE buffer pH 9,0; (*) A défaut, 'le démasquage de l'antigène peut être 'effectué avec un tampon citrate pH 6,0.

Contrôles positifs:

WB : cellules HL-60, cellules HUVEC, tissu placentaire humain

IHC : tissu de cancer du sein humain, tissu d'amygdalite humaine, tissu de carcinome à cellules rénales humaine, tissu placentaire humaine

IF : tissu d'amygdalite humaine, tissu de cancer du foie humaine

Informations générales

Endoglin (ENG, CD105) is a homodimeric cell membrane glycoprotein of 180 kDa, composed of disulphide-linked subunits of 95 kDa. Endoglin is a proliferation-associated and hypoxia-inducible protein mainly expressed on vascular endothelial cells. It acts as an accessory receptor for transforming growth factor beta (TGF-β) and is involved in vascular development and remodelling. The important role of Endoglin in angiogenesis and in tumor progression makes it an ideal target for antiangiogenic therapy and a good marker for tumor prognosis. (PMID: 1326540; 14528280; 21737653; 12773481)

Publications notables

| Autrice | Pubmed ID | Journal | Application |
|------------|-----------|--------------------|-------------|
| Qing Zhang | 35765095 | Stem Cell Res Ther | IF |
| Baihe Han | 35968497 | Dis Markers | FC |
| Hou-Fu Xia | 35916917 | Cell Tissue Res | IHC,IF |

Stockage

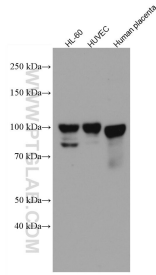
Stockage:
Stocker à -20 °C.
Tampon de stockage:
PBS avec azoture de sodium à 0,02 % et glycérol à 50 % pH 7,3
L'aliquotage n'est pas nécessaire pour le stockage à -20C

*** Les 20ul contiennent 0,1% de BSA.

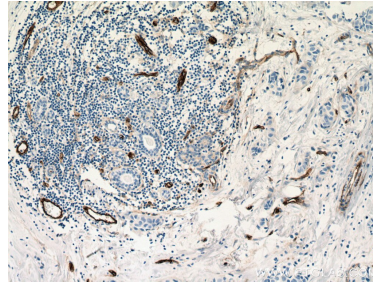
For technical support and original validation data for this product please contact:
T: 1 (888) 4PTGLAB (1-888-478-4522) (toll free in USA), or 1(312) 455-8498 (outside USA)
E: proteintech@ptglab.com
W: ptglab.com

This product is exclusively available under Proteintech Group brand and is not available to purchase from any other manufacturer.

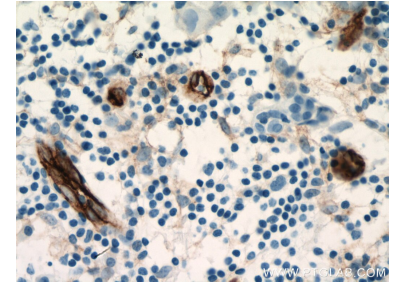
Données de validation sélectionnées



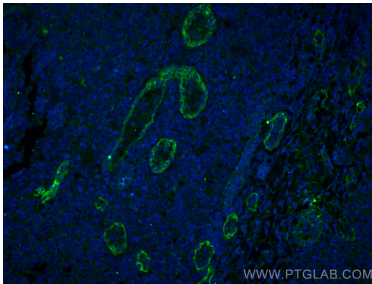
Various lysates were subjected to SDS PAGE followed by western blot with 67075-1-Ig (Endoglin/CD105 antibody) at dilution of 1:10000 incubated at room temperature for 1.5 hours.



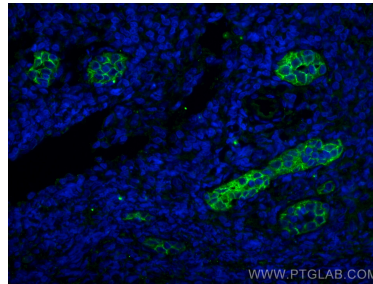
Immunohistochemical analysis of paraffin-embedded human breast cancer tissue slide using 67075-1-Ig (Endoglin/CD105 antibody) at dilution of 1:20000 (under 10x lens. Heat mediated antigen retrieval with Tris-EDTA buffer (pH 9.0).



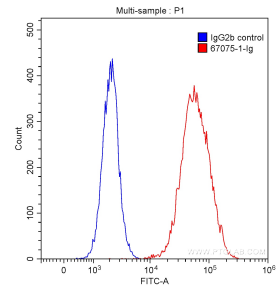
Immunohistochemical analysis of paraffin-embedded human breast cancer tissue slide using 67075-1-Ig (Endoglin/CD105 antibody) at dilution of 1:20000 (under 40x lens. Heat mediated antigen retrieval with Tris-EDTA buffer (pH 9.0).



Immunofluorescent analysis of (4% PFA) fixed human tonsillitis tissue using Endoglin/CD105 antibody (67075-1-Ig, Clone: 2D5E8) at dilution of 1:10000 and CoraLite@488-Conjugated AffiniPure Goat Anti-Mouse IgG(H+L).



Immunofluorescent analysis of (4% PFA) fixed human tonsillitis tissue using Endoglin/CD105 antibody (67075-1-Ig, Clone: 2D5E8) at dilution of 1:10000 and CoraLite@488-Conjugated AffiniPure Goat Anti-Mouse IgG(H+L).



1x10⁶ HUVEC cells were stained with 0.20 ug Anti-Human Endoglin/CD105 (67075-1-Ig, Clone:2D5E8) (red) or 0.20 ug control antibody (blue) and CoraLite@488-Conjugated AffiniPure Goat Anti-Mouse IgG(H+L) with dilution of 1:1000. Cells were fixed with 90% MeOH.