

À des fins de recherche uniquement

Anticorps Monoclonal anti-APBB1

Numéro de catalogue: 67077-1-Ig



Informations de base

Numéro de catalogue:	67077-1-Ig	Numéro d'acquisition GenBank:	BC010854	Méthode de purification:	Purification par protéine G
Taille:	150ul , Concentration: 680 µg/ml by Bradford method using BSA as the standard;	Identification du gène (NCBI):	322	CloneNo.:	1B9G10
Hôte:	Mouse	Nom complet:	amyloid beta (A4) precursor protein-binding, family B, member 1 (Fe65)	Dilutions recommandées:	WB 1:1000-1:3000 IHC 1:50-1:500 IF 1:200-1:800
Isotype:	IgG1	MW calculé	708 aa, 77 kDa		
Immunogen Catalog Number:	AG27436	MW observés:	100 kDa		

Applications

Applications testées:

IF, IHC, WB, ELISA

Spécificité de l'espèce:

Humain, porc, rat, souris

Remarque-IHC: il est suggéré de démasquer l'antigène avec un tampon de TE buffer pH 9.0; (*) À défaut, 'le démasquage de l'antigène peut être effectué avec un tampon citrate pH 6,0.

Contrôles positifs:

WB : tissu cérébral de porc, cerveau de porc, cerveau de rat, cerveau de souris

IHC : tissu de cervelet de souris, tissu cérébral de souris

IF : tissu cérébral de souris,

Informations générales

APBB1 (Amyloid-beta A4 precursor protein-binding family B member 1) encoded FE65 protein. It was known as a binding partner of APP in the Alzheimer's disease studies, and expressed at high levels in brain especially in cerebellum, hippocampus, and cortex. FE65 and FE65-like (FE65L or FE65L1) proteins are cytoplasmic adaptor proteins that possess two phosphotyrosine binding domains (PTB1 and PTB2) and one WW binding domain (PMID:22429478). After phosphorylation modification, the band of FE65 protein would appear around 100 kDa. However, some tested a non-specific band at 55-60 kDa, it was refer to as FE65-like protein (PMID:12843239).

Stockage

Stockage:

Stocker à -20 °C.

Tampon de stockage:

PBS avec azoture de sodium à 0,02 % et glycérol à 50 % pH 7,3

L'aliquotage n'est pas nécessaire pour le stockage à -20C

*** Les 20ul contiennent 0,1% de BSA.

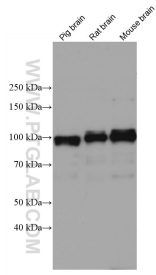
For technical support and original validation data for this product please contact:

T: 1 (888) 4PTGLAB (1-888-478-4522) (toll free in USA), or 1(312) 455-8498 (outside USA)

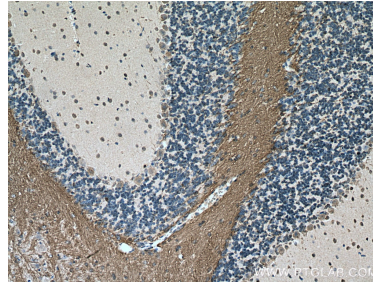
E: proteintech@ptglab.com
W: ptglab.com

This product is exclusively available under Proteintech Group brand and is not available to purchase from any other manufacturer.

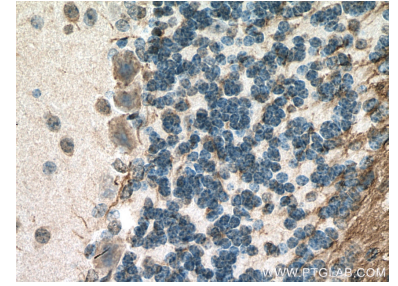
Données de validation sélectionnées



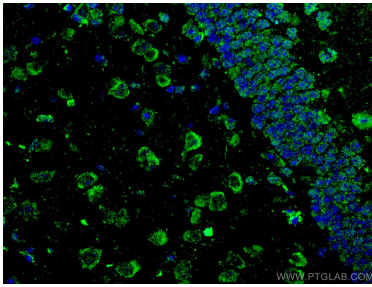
Various lysates were subjected to SDS PAGE followed by western blot with 67077-1-Ig (APBB1 antibody) at dilution of 1:1400 incubated at room temperature for 1.5 hours.



Immunohistochemical analysis of paraffin-embedded mouse cerebellum tissue slide using 67077-1-Ig (APBB1 antibody) at dilution of 1:200 (under 10x lens). Heat mediated antigen retrieval with Tris-EDTA buffer (pH 9.0).



Immunohistochemical analysis of paraffin-embedded mouse cerebellum tissue slide using 67077-1-Ig (APBB1 antibody) at dilution of 1:200 (under 40x lens). Heat mediated antigen retrieval with Tris-EDTA buffer (pH 9.0).



Immunofluorescent analysis of (4% PFA) fixed mouse brain tissue using APBB1 antibody (67077-1-Ig, Clone: 1B9G10) at dilution of 1:400 and CoraLite®488-Conjugated AffiniPure Goat Anti-Mouse IgG(H+L).