

À des fins de recherche uniquement

Anticorps Monoclonal anti-CES1

Numéro de catalogue: 67079-1-Ig



Informations de base

Numéro de catalogue: 67079-1-Ig	Numéro d'acquisition GenBank: BC012418	Méthode de purification: Purification par protéine G
Taille: 150ul , Concentration: 900 µg/ml by Nanodrop and 700 µg/ml by Bradford method using BSA as the standard;	Identification du gène (NCBI): 1066	CloneNo.: 1C11C1
Hôte: Mouse	Nom complet: carboxylesterase 1 (monocyte/macrophage serine esterase 1)	Dilutions recommandées: WB 1:2000-1:10000 IHC 1:300-1:1200 IF 1:50-1:500
Isotype: IgG1	MW calculé 566 aa, 62 kDa	
Immunogen Catalog Number: AG10647	MW observés: 60-63 kDa	

Applications

Applications testées:

IF, IHC, WB, ELISA

Spécificité de l'espèce:

Humain

Remarque-IHC: il est suggéré de démasquer l'antigène avec un tampon de TE buffer pH 9.0; (*) À défaut, 'le démasquage de l'antigène peut être 'effectué avec un tampon citrate pH 6,0.

Contrôles positifs:

WB : cellules U-937, cellules THP-1

IHC : tissu hépatique humain, tissu de cancer du foie humain

IF : cellules HepG2,

Informations générales

CES1(liver carboxylesterase 1) is also named as CES2, SES1 and belongs to the type-B carboxylesterase/lipase family. The deduced 567-amino acid protein contains a putative 18-amino acid signal peptide and a characteristic C-terminal endoplasmic reticulum retention signal (HXEL). It is the major hydrolytic enzyme responsible for the metabolism of numerous therapeutic agents as well as endogenous substrates. Western blot analysis demonstrated that CES1 is expressed in human liver microsomes (HLM) but not in human intestinal microsomes (HIM) (PMID:19185566).

Stockage

Stockage:

Stocker à -20°C. Stable pendant un an après l'expédition.

Tampon de stockage:

PBS avec azoture de sodium à 0,02 % et glycérol à 50 % pH 7,3

L'aliquotage n'est pas nécessaire pour le stockage à -20C

*** Les 20ul contiennent 0,1% de BSA.

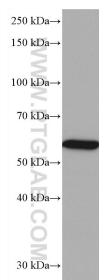
For technical support and original validation data for this product please contact:

T: 1 (888) 4PTGLAB (1-888-478-4522) (toll free in USA), or 1(312) 455-8498 (outside USA)

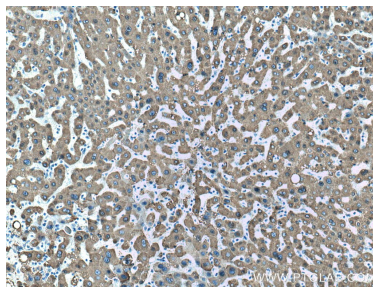
E: proteintech@ptglab.com
W: ptglab.com

This product is exclusively available under Proteintech Group brand and is not available to purchase from any other manufacturer.

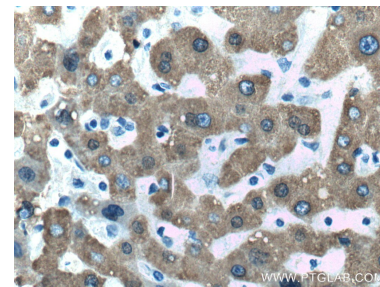
Données de validation sélectionnées



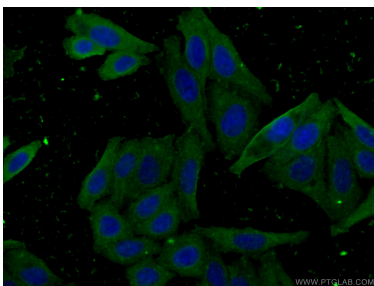
U-937 cells were subjected to SDS PAGE followed by western blot with 67079-1-Ig (CES1 antibody) at dilution of 1:5000 incubated at room temperature for 1.5 hours.



Immunohistochemical analysis of paraffin-embedded human liver tissue slide using 67079-1-Ig (CES1 antibody) at dilution of 1:600 (under 10x lens. Heat mediated antigen retrieval with Tris-EDTA buffer (pH 9.0).



Immunohistochemical analysis of paraffin-embedded human liver tissue slide using 67079-1-Ig (CES1 antibody) at dilution of 1:600 (under 40x lens. Heat mediated antigen retrieval with Tris-EDTA buffer (pH 9.0).



Immunofluorescent analysis of (-20°C Ethanol) fixed HepG2 cells using 67079-1-Ig (CES1 antibody) at dilution of 1:100 and CoraLite488-Conjugated AffiniPure Goat Anti-Mouse IgG(H+L).