

À des fins de recherche uniquement

# Anticorps Monoclonal anti-EPHB1

Numéro de catalogue: 67080-1-Ig



## Informations de base

Numéro de catalogue: 67080-1-Ig	Numéro d'acquisition GenBank: BC111744	Méthode de purification: Purification par protéine A
Taille: 150ul, Concentration: 2200 µg/ml by Nanodrop and 1500 µg/ml by Bradford method using BSA as the standard;	Identification du gène (NCBI): 2047	CloneNo.: 1B7C12
Hôte: Mouse	Nom complet: EPH receptor B1	Dilutions recommandées: WB 1:1000-1:4000
Isotype: IgG2b	MW calculé 984 aa, 110 kDa	
Immunogen Catalog Number: AG16347	MW observés: 110-120 kDa	

## Applications

Applications testées: WB, ELISA	Contrôles positifs: WB : tissu de cervelet de souris, tissu cérébral de souris, tissu cérébral humain fœtal
Spécificité de l'espèce: Humain, souris	

## Informations générales

EPHB1, also named as EPHT2, NET, HEK6 and ELK, belongs to the protein kinase superfamily, Tyr protein kinase family, and Ephrin receptor subfamily. It is a receptor for members of the ephrin-B family. EPHB1 binds to ephrin-B1, -B2 and -B3. EPHB1 may be involved in cell-cell interactions in the nervous system. EPHB1 catalyzes the reaction: ATP + a [protein]-L-tyrosine = ADP + a [protein]-L-tyrosine phosphate.

## Stockage

Stockage:  
Stocker à -20 °C.  
Tampon de stockage:  
PBS avec azoture de sodium à 0,02 % et glycérol à 50 % pH 7,3  
L'aliquotage n'est pas nécessaire pour le stockage à -20C

\*\*\* Les 20ul contiennent 0,1% de BSA.

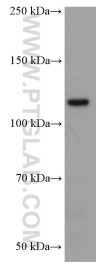
For technical support and original validation data for this product please contact:

T: 1 (888) 4PTGLAB (1-888-478-4522) (toll free  
in USA), or 1(312) 455-8498 (outside USA)

E: [proteintech@ptglab.com](mailto:proteintech@ptglab.com)  
W: [ptglab.com](http://ptglab.com)

This product is exclusively available under Proteintech Group brand and is not available to purchase from any other manufacturer.

## Données de validation sélectionnées



mouse cerebellum tissue were subjected to SDS PAGE followed by western blot with 67080-1-Ig (EPHB1 antibody) at dilution of 1:2000 incubated at room temperature for 1.5 hours.