

À des fins de recherche uniquement

# Anticorps Monoclonal anti-EAAT2

Numéro de catalogue: 67083-1-Ig



## Informations de base

Numéro de catalogue: 67083-1-Ig	Numéro d'acquisition GenBank: BC132768	Méthode de purification: Purification par protéine A
Taille: 150ul, Concentration: 1300 µg/ml by Nanodrop and 800 µg/ml by Bradford method using BSA as the standard;	Identification du gène (NCBI): 6506	CloneNo.: 1C8D10
Hôte: Mouse	Nom complet: solute carrier family 1 (glial high affinity glutamate transporter), member 2	Dilutions recommandées: WB 1:1000-1:8000 IHC 1:200-1:800
Isotype: IgG1	MW calculé 574 aa, 62 kDa	
Immunogen Catalog Number: AG19816	MW observés: 60-70 kDa	

## Applications

### Applications testées:

IHC, WB, ELISA

### Spécificité de l'espèce:

Humain, rat, souris

**Remarque-IHC: il est suggéré de démasquer l'antigène avec un tampon de TE buffer pH 9.0; (\*) À défaut, le démasquage de l'antigène peut être effectué avec un tampon citrate pH 6.0.**

### Contrôles positifs:

WB : tissu cérébral de rat, tissu cérébral de souris, tissu de cervelet de rat

IHC : tissu cérébral de souris, tissu cérébral de rat

## Informations générales

EAAT2 (also known as GLT-1), is encoded by SLC1A2 and is a glutamate transporter which can clear the majority of extracellular glutamate in brain and prevent brain seizures. Three isoforms of EAAT2 exist due to the alternative splicing. In addition to the 65-70 kDa monomer form, 130-150 kDa dimer of EAAT2 can also be observed on SDS-PAGE. (PMID: 22114258)

## Stockage

### Stockage:

Stocker à -20°C. Stable pendant un an après l'expédition.

### Tampon de stockage:

PBS avec azoture de sodium à 0,02 % et glycérol à 50 % pH 7,3

L'aliquotage n'est pas nécessaire pour le stockage à -20C

\*\*\* Les 20ul contiennent 0,1% de BSA.

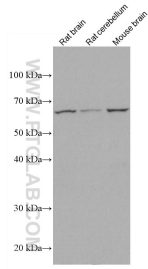
For technical support and original validation data for this product please contact:

T: 1 (888) 4PTGLAB (1-888-478-4522) (toll free  
in USA), or 1(312) 455-8498 (outside USA)

E: proteintech@ptglab.com  
W: ptglab.com

This product is exclusively available under Proteintech Group brand and is not available to purchase from any other manufacturer.

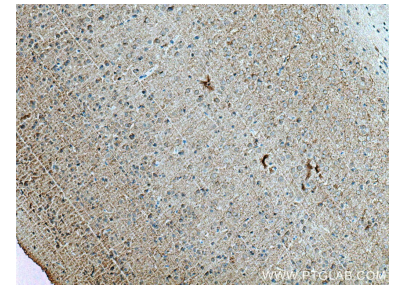
## Données de validation sélectionnées



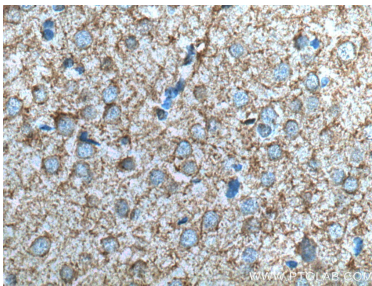
Various lysates were subjected to SDS PAGE followed by western blot with 67083-1-Ig (SLC1A2 antibody) at dilution of 1:4000 incubated at room temperature for 1.5 hours.



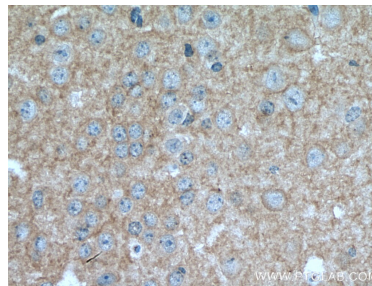
Immunohistochemical analysis of paraffin-embedded mouse brain tissue slide using 67083-1-Ig (EAAT2 antibody) at dilution of 1:400 (under 10x lens). Heat mediated antigen retrieval with Tris-EDTA buffer (pH 9.0).



Immunohistochemical analysis of paraffin-embedded rat brain tissue slide using 67083-1-Ig (EAAT2 antibody) at dilution of 1:1000 (under 10x lens). Heat mediated antigen retrieval with Tris-EDTA buffer (pH 9.0).



Immunohistochemical analysis of paraffin-embedded rat brain tissue slide using 67083-1-Ig (EAAT2 antibody) at dilution of 1:1000 (under 40x lens). Heat mediated antigen retrieval with Tris-EDTA buffer (pH 9.0).



Immunohistochemical analysis of paraffin-embedded mouse brain tissue slide using 67083-1-Ig (EAAT2 antibody) at dilution of 1:400 (under 40x lens). Heat mediated antigen retrieval with Tris-EDTA buffer (pH 9.0).