

À des fins de recherche uniquement

# Anticorps Monoclonal anti-RALB

Numéro de catalogue: 67094-1-Ig



## Informations de base

Numéro de catalogue: 67094-1-Ig	Numéro d'acquisition GenBank: BC018163	Méthode de purification: Purification par protéine A
Taille: 150ul , Concentration: 2200 µg/ml by Nanodrop and 1000 µg/ml by Bradford method using BSA as the standard;	Identification du gène (NCBI): 5899	CloneNo.: 1D11C11
Hôte: Mouse	Nom complet: v-ral simian leukemia viral oncogene homolog B (ras related; GTP binding protein)	Dilutions recommandées: WB 1:5000-1:50000 IHC 1:500-1:2000 IF 1:400-1:1600
Isotype: IgG2a	MW calculé 206 aa, 23 kDa	
Immunogen Catalog Number: AG28600	MW observés: 24 kDa	

## Applications

### Applications testées:

IF, IHC, WB, ELISA

### Spécificité de l'espèce:

Humain, porc, rat, souris

**Remarque-IHC: il est suggéré de démasquer l'antigène avec un tampon de TE buffer pH 9.0; (\*) À défaut, le démasquage de l'antigène peut être effectué avec un tampon citrate pH 6,0.**

### Contrôles positifs:

WB : cellules HeLa, cellules cérébrales de porc, cellules HepG2, cellules Jurkat, cellules MCF-7, tissu cérébral de rat, tissu cérébral de souris

IHC : tissu vésical de souris, tissu de cancer du poumon humain, tissu hépatique de souris, tissu placentaire de souris, tissu pulmonaire de souris

IF : tissu de cancer du poumon humain,

## Informations générales

### Stockage

#### Stockage:

Stocker à -20 °C.

#### Tampon de stockage:

PBS avec azoture de sodium à 0,02 % et glycérol à 50 % pH 7,3

L'aliquotage n'est pas nécessaire pour le stockage à -20C

\*\*\* Les 20ul contiennent 0,1% de BSA.

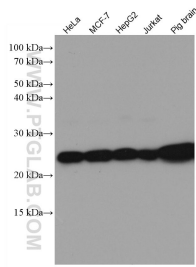
For technical support and original validation data for this product please contact:

T: 1 (888) 4PTGLAB (1-888-478-4522) (toll free in USA), or 1(312) 455-8498 (outside USA)

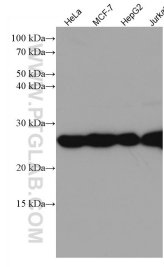
E: proteintech@ptglab.com  
W: ptglab.com

This product is exclusively available under Proteintech Group brand and is not available to purchase from any other manufacturer.

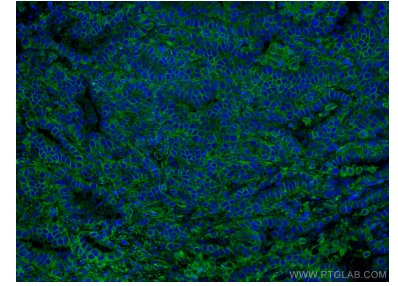
## Données de validation sélectionnées



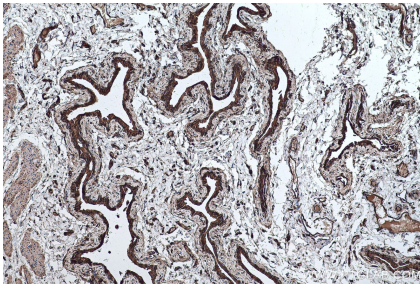
Various lysates were subjected to SDS PAGE followed by western blot with 67094-1-Ig (RALB antibody) at dilution of 1:3000 incubated at room temperature for 1.5 hours.



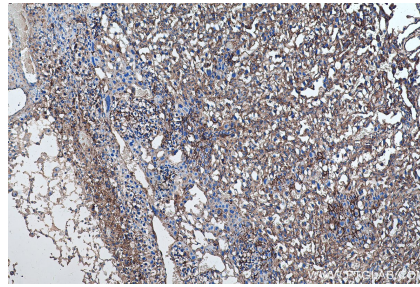
Various lysates were subjected to SDS PAGE followed by western blot with 67094-1-Ig (RALB antibody) at dilution of 1:10000 incubated at room temperature for 1.5 hours.



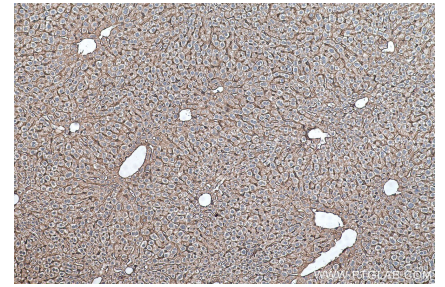
Immunofluorescent analysis of (4% PFA) fixed human lung cancer tissue using RALB antibody (67094-1-Ig, Clone: 1D11C11) at dilution of 1:800 and CoraLite®488-Conjugated AffiniPure Goat Anti-Mouse IgG(H+L).



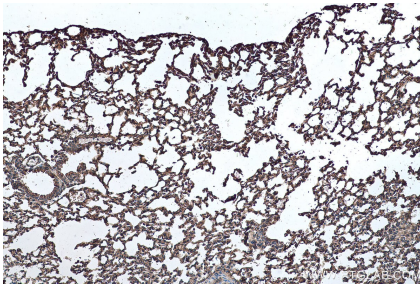
Immunohistochemical analysis of paraffin-embedded mouse bladder tissue slide using 67094-1-Ig (RALB antibody) at dilution of 1:1000 (under 10x lens). Heat mediated antigen retrieval with Tris-EDTA buffer (pH 9.0).



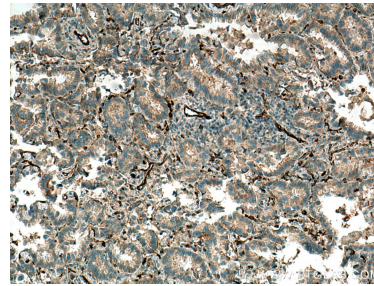
Immunohistochemical analysis of paraffin-embedded mouse placenta tissue slide using 67094-1-Ig (RALB antibody) at dilution of 1:1000 (under 10x lens). Heat mediated antigen retrieval with Tris-EDTA buffer (pH 9.0).



Immunohistochemical analysis of paraffin-embedded mouse liver tissue slide using 67094-1-Ig (RALB antibody) at dilution of 1:1000 (under 10x lens). Heat mediated antigen retrieval with Tris-EDTA buffer (pH 9.0).



Immunohistochemical analysis of paraffin-embedded mouse lung tissue slide using 67094-1-Ig (RALB antibody) at dilution of 1:1000 (under 10x lens). Heat mediated antigen retrieval with Tris-EDTA buffer (pH 9.0).



Immunohistochemical analysis of paraffin-embedded human lung cancer tissue slide using 67094-1-Ig (RALB antibody) at dilution of 1:1000 (under 10x lens). Heat mediated antigen retrieval with Tris-EDTA buffer (pH 9.0).