

À des fins de recherche uniquement

Anticorps Monoclonal anti-ELAVL2

Numéro de catalogue: 67097-1-Ig **2 Publications**



Informations de base

Numéro de catalogue: 67097-1-Ig	Numéro d'acquisition GenBank: BC030692	Méthode de purification: Purification par protéine G
Taille: 150ul , Concentration: 1900 µg/ml by Nanodrop and 1000 µg/ml by Bradford method using BSA as the standard;	Identification du gène (NCBI): 1993	CloneNo.: 2D8C10
Hôte: Mouse	Nom complet: ELAV (embryonic lethal, abnormal vision, Drosophila)-like 2 (Hu antigen B)	Dilutions recommandées: WB 1:5000-1:50000
Isotype: IgG1	MW calculé 39 kDa	
Immunogen Catalog Number: AG28310	MW observés: 35-40 kDa	

Applications

Applications testées: WB, ELISA	Contrôles positifs: WB : cellules HEK-293, cellules Neuro-2a, cellules PC-12, cellules SH-SY5Y, tissu cérébral de porc
Demandes citées: IF, WB	
Spécificité de l'espèce: Humain, porc, rat, souris	
Espèces citées: Humain, souris	

Informations générales

The ELAV (embryonic lethal abnormal visual system) gene of *D. Melanogaste* is the the first identified member of a family of neuronal RNA binding proteins that is conserved in metazoans. The proteins in this family contain three RNA Recognition Motifs (RRM), with a hinge region separating the second and third RRM and an optional non-conserved N-terminal region. The hinge includes signals essential for nuclear export and subcellular localization [PMID:9874760]. Elav is expressed specifically in the neurons and is required for the correct development and maintenance of the nervous system. ELAVL2 can binds RNA, and recognize a GAAA motif. In addition, it can bind to its own 3'-UTR, the FOS 3'-UTR and the ID 3'-UTR [PMID:18715504,21695151].

Publications notables

Autrice	Pubmed ID	Journal	Application
Dominika Grzejda	36170367	Sci Adv	WB
Sandra Diaz-Garcia	34618203	Acta Neuropathol	IF

Stockage

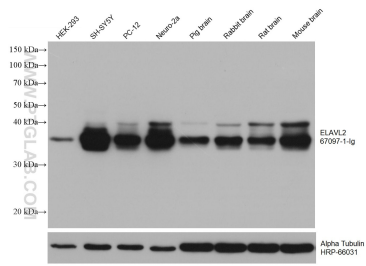
Stockage:
Stocker à -20°C. Stable pendant un an après l'expédition.
Tampon de stockage:
PBS avec azoture de sodium à 0,02 % et glycérol à 50 % pH 7,3
L'aliquotage n'est pas nécessaire pour le stockage à -20C

***** Les 20ul contiennent 0,1% de BSA.**

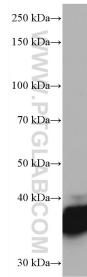
For technical support and original validation data for this product please contact:
T: 1 (888) 4PTGLAB (1-888-478-4522) (toll free in USA), or 1(312) 455-8498 (outside USA)
E: proteintech@ptglab.com
W: ptglab.com

This product is exclusively available under Proteintech Group brand and is not available to purchase from any other manufacturer.

Données de validation sélectionnées



Various lysates were subjected to SDS PAGE followed by western blot with 67097-1-Ig (ELAVL2 antibody) at dilution of 1:10000 incubated at room temperature for 1.5 hours. The membrane was stripped and reblotted with HRP-conjugated Alpha Tubulin Monoclonal antibody (HRP-66031) as loading control.



Neuro-2a cells were subjected to SDS PAGE followed by western blot with 67097-1-Ig (ELAVL2 antibody) at dilution of 1:10000 incubated at room temperature for 1.5 hours.