

À des fins de recherche uniquement

Anticorps Monoclonal anti-PICK1

Numéro de catalogue: 67099-1-Ig



Informations de base

Numéro de catalogue: 67099-1-Ig	Numéro d'acquisition GenBank: BC017561	Méthode de purification: Purification par protéine A
Taille: 150ul, Concentration: 2300 µg/ml by Nanodrop and 1000 µg/ml by Bradford method using BSA as the standard;	Identification du gène (NCBI): 9463	CloneNo.: 2E11A4
Hôte: Mouse	Nom complet: protein interacting with PRKCA 1	Dilutions recommandées: WB 1:1000-1:6000
Isotype: IgG2a	MW calculé: 47 kDa	
Immunogen Catalog Number: AG28609	MW observés: 50 kDa	

Applications

Applications testées:
WB, ELISA

Spécificité de l'espèce:
Humain, porc, rat, souris

Contrôles positifs:
WB : cellules HeLa, cellules LNCaP, cellules MCF-7,
tissu cérébral de porc, tissu cérébral de rat, tissu
cérébral de souris

Informations générales

Protein interacting with C kinase 1 (PICK1) was first cloned as a PKC-binding partner through yeast two hybrid system. PICK1 acts as a critical regulator of membrane receptors' subcellular trafficking to modulate neural processes such as learning and memory, and is widely expressed in brain, testis, heart, lung, liver, kidney and muscle. It probably binds to and organize the subcellular localization of a variety of membrane proteins containing some PDZ recognition sequence, for instance, PICK1 is a critical mediator of α -amino-3-hydroxy-5-methyl-4-isoxazolepropionic acid receptor (AMPA) trafficking in neural synapses. PICK1 expression on D-serine release and glutamate transport in astrocytes suggests a potential implication of PICK1 in the progression of amyotrophic lateral sclerosis (ALS). PICK1 may also participate in breast cancer development through inhibition of TGF- β signaling.

Stockage

Stockage:
Stocker à -20 °C

Tampon de stockage:
PBS avec azoture de sodium à 0,02 % et glycérol à 50 % pH 7,3
L'aliquotage n'est pas nécessaire pour le stockage à -20C

*** Les 20ul contiennent 0,1% de BSA.

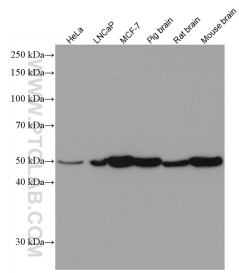
For technical support and original validation data for this product please contact:

T: 1 (888) 4PTGLAB (1-888-478-4522) (toll free
in USA), or 1(312) 455-8498 (outside USA)

E: proteintech@ptglab.com
W: ptglab.com

This product is exclusively available under Proteintech Group brand and is not available to purchase from any other manufacturer.

Données de validation sélectionnées



Various lysates were subjected to SDS PAGE followed by western blot with 67099-1-Ig (PICK1 antibody) at dilution of 1:3000 incubated at room temperature for 1.5 hours.