

À des fins de recherche uniquement

Anticorps Monoclonal anti-IDE

Numéro de catalogue: 67106-1-Ig

Phare

1 Publications



Informations de base

Numéro de catalogue: 67106-1-Ig	Numéro d'acquisition GenBank: BC096336	Méthode de purification: Purification par protéine A
Taille: 150ul , Concentration: 2500 µg/ml by Nanodrop and 1000 µg/ml by Bradford method using BSA as the standard;	Identification du gène (NCBI): 3416	CloneNo.: 3E10G1
Hôte: Mouse	Nom complet: Abeta degrading protease	Dilutions recommandées: WB 1:5000-1:50000
Isotype: IgG2b	MW calculé: 1019 aa, 118 kDa	
Immunogen Catalog Number: AG17161	MW observés: 100-120 kDa	

Applications

Applications testées:

WB, ELISA

Demandes citées:

WB

Spécificité de l'espèce:

Humain, rat, souris

Espèces citées:

souris

Contrôles positifs:

WB : cellules HeLa, cellules A375, cellules A431, cellules HEK-293, cellules HepG2, cellules HSC-T6, cellules HT-1080, cellules Jurkat, cellules LNCaP, cellules MCF-7, cellules NCCIT, cellules NIH/3T3, cellules RAW 264.7

Informations générales

IDE(INS-degrading enzyme) belongs to the peptidase M16 family. It is also known as insulysin and is a 110-kD neutral metallopeptidase that can degrade a number of peptides, including INS and beta-amyloid(PMID:9830016). The reduction of IDE expression may be a risk factor for AD, and that IDE may interact with APOE status to affect beta-amyloid metabolism(PMID:12507914). It can exist as a homodimer and form higher oligomers(PMID:17613531).

Publications notables

Autrice	Pubmed ID	Journal	Application
Qian Su	36726048	Mol Nutr Food Res	WB

Stockage

Stockage:

Stocker à -20°C. Stable pendant un an après l'expédition.

Tampon de stockage:

PBS avec azoture de sodium à 0,02 % et glycérol à 50 % pH 7,3

L'aliquotage n'est pas nécessaire pour le stockage à -20C

*** Les 20ul contiennent 0,1% de BSA.

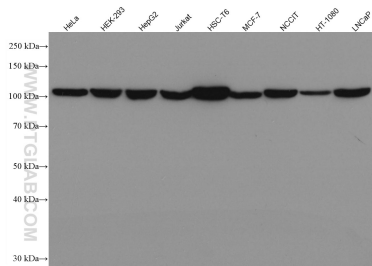
For technical support and original validation data for this product please contact:

T: 1 (888) 4PTGLAB (1-888-478-4522) (toll free in USA), or 1(312) 455-8498 (outside USA)

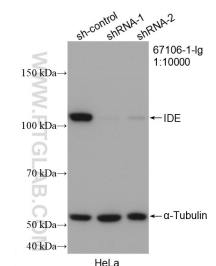
E: proteintech@ptglab.com
W: ptglab.com

This product is exclusively available under Proteintech Group brand and is not available to purchase from any other manufacturer.

Données de validation sélectionnées



Various lysates were subjected to SDS PAGE followed by western blot with 67106-1-Ig (IDE antibody) at dilution of 1:10000 incubated at room temperature for 1.5 hours.



WB result of IDE antibody (67106-1-Ig: 1:10000; incubated at room temperature for 1.5 hours) with sh-Control and sh-IDE transfected HeLa cells.