

À des fins de recherche uniquement

# Anticorps Monoclonal anti-Calpastatin



Numéro de catalogue: 67107-1-Ig **2 Publications**

## Informations de base

<b>Numéro de catalogue:</b> 67107-1-Ig	<b>Numéro d'acquisition GenBank:</b> BC013579	<b>Méthode de purification:</b> Purification par protéine G
<b>Taille:</b> 150ul , Concentration: 1900 µg/ml by Nanodrop and 880 µg/ml by Bradford method using BSA as the standard;	<b>Identification du gène (NCBI):</b> 831	<b>CloneNo.:</b> 1G12A2
<b>Hôte:</b> Mouse	<b>Nom complet:</b> calpastatin	<b>Dilutions recommandées:</b> WB 1:1000-1:6000 IF 1:200-1:800
<b>Isotype:</b> IgG1	<b>MW calculé</b> 667 aa, 72 kDa	
<b>Immunogen Catalog Number:</b> AG28669	<b>MW observés:</b> 115 kDa	

## Applications

### Applications testées:

FC, IF, WB, ELISA

### Demandes citées:

WB

### Spécificité de l'espèce:

Humain

### Espèces citées:

souris

### Contrôles positifs:

WB : cellules HeLa, cellules HEK-293, cellules HepG2, cellules LNCaP, cellules MCF-7, cellules THP-1

IF : cellules HeLa,

## Informations générales

## Publications notables

Autrice	Pubmed ID	Journal	Application
Juan Wang	35026406	Pharmacol Res	WB
Fengming Shen	35498131	Oxid Med Cell Longev	WB

## Stockage

### Stockage:

Stocker à -20°C. Stable pendant un an après l'expédition.

### Tampon de stockage:

PBS avec azoture de sodium à 0,02 % et glycérol à 50 % pH 7,3

L'aliquotage n'est pas nécessaire pour le stockage à -20C

**\*\*\* Les 20ul contiennent 0,1% de BSA.**

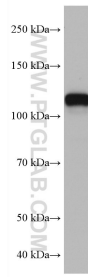
For technical support and original validation data for this product please contact:

T: 1 (888) 4PTGLAB (1-888-478-4522) (toll free in USA), or 1(312) 455-8498 (outside USA)

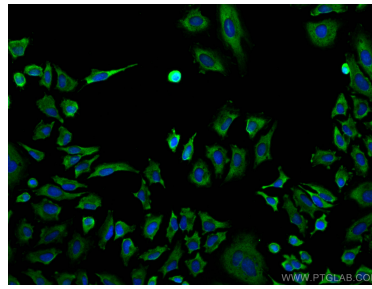
E: proteintech@ptglab.com  
W: ptglab.com

This product is exclusively available under Proteintech Group brand and is not available to purchase from any other manufacturer.

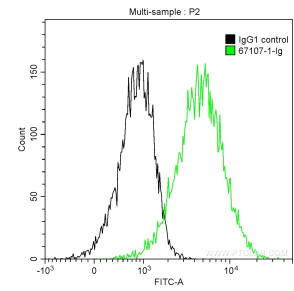
## Données de validation sélectionnées



HeLa cells were subjected to SDS PAGE followed by western blot with 67107-1-Ig (CAST antibody) at dilution of 1:4000 incubated at room temperature for 1.5 hours.



Immunofluorescent analysis of (-20°C Ethanol) fixed HeLa cells using Calpastatin antibody (67107-1-Ig, Clone: 1G12A2 ) at dilution of 1:400 and CoraLite®488-Conjugated AffiniPure Goat Anti-Mouse IgG(H+L).



1X10<sup>6</sup> HeLa cells were intracellularly stained with 0.2 ug Anti-Human Calpastatin (67107-1-Ig, Clone:1G12A2) and CoraLite®488-Conjugated AffiniPure Goat Anti-Mouse IgG(H+L) at dilution 1:1000 (green), and 0.2 ug Mouse IgG1 Isotype Control (66360-1-Ig, Clone: T1F8D3F10) (black). Cells were fixed with 4% PFA and permeabilized with 0.1% TritonX-100.