

À des fins de recherche uniquement

# Anticorps Monoclonal anti-LOXL2

Numéro de catalogue: 67139-1-Ig **3 Publications**



## Informations de base

<b>Numéro de catalogue:</b> 67139-1-Ig	<b>Numéro d'acquisition GenBank:</b> BC000594	<b>Méthode de purification:</b> Purification par protéine A
<b>Taille:</b> 150ul , Concentration: 2000 µg/ml by Nanodrop and 1000 µg/ml by Bradford method using BSA as the standard;	<b>Identification du gène (NCBI):</b> 4017	<b>CloneNo.:</b> 1H7F1
<b>Hôte:</b> Mouse	<b>Nom complet:</b> lysyl oxidase-like 2	<b>Dilutions recommandées:</b> WB 1:1000-1:4000 IF 1:50-1:500
<b>Isotype:</b> IgG2a	<b>MW calculé:</b> 774 aa, 87 kDa	
<b>Immunogen Catalog Number:</b> AG28566	<b>MW observés:</b> 100 kDa	

## Applications

<b>Applications testées:</b> IF, WB, ELISA	<b>Contrôles positifs:</b>
<b>Demandes citées:</b> IF, IHC, WB	<b>WB :</b> cellules A549, cellules A375, tissu cardiaque humain, tissu placentaire humain
<b>Spécificité de l'espèce:</b> Humain	<b>IF :</b> cellules HepG2,
<b>Espèces citées:</b> Humain, souris	

## Informations générales

LOXL2, also named as WS9-14, belongs to an amine oxidase family whose members have been implicated in crosslink formation in stromal collagens and elastin, cell motility, and tumor development and progression. LOXL2 activity might be a crucial modulator of Snail, providing an additional control mechanism of EMT and tumor progression. Increased LOXL2 expression in colon and esophageal cancer may contribute to tumor progression. We detected a band about 100 kd which is a secretory mature LOXL2 protein modified by glycosylation (PMID: 24014025).

## Publications notables

Autrice	Pubmed ID	Journal	Application
Yongxin Wu	35712918	Aging Cell	WB
Bing Sun	35413319	Int J Biol Macromol	WB, IHC, IF
Zhaoyu Wang	37185458	Oncogene	WB

## Stockage

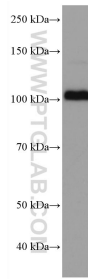
**Stockage:**  
Stocker à -20 °C  
**Tampon de stockage:**  
PBS avec azoture de sodium à 0,02 % et glycérol à 50 % pH 7,3  
L'aliquotage n'est pas nécessaire pour le stockage à -20C

\*\*\* Les 20ul contiennent 0,1% de BSA.

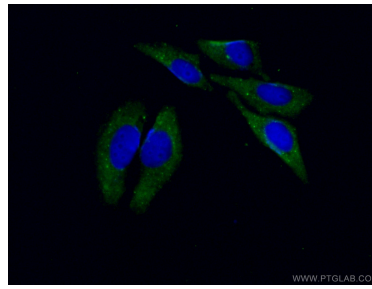
For technical support and original validation data for this product please contact:  
T: 1 (888) 4PTGLAB (1-888-478-4522) (toll free in USA), or 1(312) 455-8498 (outside USA)  
E: proteintech@ptglab.com  
W: ptglab.com

This product is exclusively available under Proteintech Group brand and is not available to purchase from any other manufacturer.

## Données de validation sélectionnées



A549 cells were subjected to SDS PAGE followed by western blot with 67139-1-Ig (LOXL2 antibody) at dilution of 1:2000 incubated at room temperature for 1.5 hours.



Immunofluorescent analysis of (-20°C Ethanol) fixed HepG2 cells using 67139-1-Ig (LOXL2 antibody) at dilution of 1:100 and CoraLite488-Conjugated AffiniPure Goat Anti-Mouse IgG(H+L).