

À des fins de recherche uniquement

# Anticorps Monoclonal anti-IRF8

Numéro de catalogue: 67142-1-Ig



## Informations de base

Numéro de catalogue: 67142-1-Ig	Numéro d'acquisition GenBank: BC126247	Méthode de purification: Purification par protéine A
Taille: 150ul, Concentration: 1700 µg/ml by Nanodrop and 1000 µg/ml by Bradford method using BSA as the standard;	Identification du gène (NCBI): 3394	CloneNo.: 3A10A4
Hôte: Mouse	Nom complet: ICSBP1	Dilutions recommandées: WB 1:1000-1:6000 IF 1:400-1:1600
Isotype: IgG2b	MW calculé: 426 aa, 48 kDa	
Immunogen Catalog Number: AG19909	MW observés: 48 kDa	

## Applications

Applications testées: IF, WB, ELISA	Contrôles positifs: WB : cellules Ramos, cellules Daudi, cellules Raji IF : cellules THP-1,
Spécificité de l'espèce: Humain	

## Informations générales

IRF8 also named as ICSBP1, is a transcription factor of the IFN regulatory factor (IRF) family. The IRF family proteins bind to the IFN-stimulated response element (ISRE) and regulate expression of genes stimulated by type I IFNs, namely IFN-alpha and IFN-beta. IRF family proteins also control expression of IFN-alpha and IFN-beta-regulated genes that are induced by viral infection. IRF8 specifically binds to the upstream regulatory region of type I IFN and IFN-inducible MHC class I genes (the IFN consensus sequence (ICS)). It plays a negative regulatory role in cells of the immune system. It is predominantly in lymphoid tissues.

## Stockage

Stockage:  
Stocker à -20°C. Stable pendant un an après l'expédition.  
Tampon de stockage:  
PBS avec azoture de sodium à 0,02 % et glycérol à 50 % pH 7,3  
L'aliquotage n'est pas nécessaire pour le stockage à -20C

\*\*\* Les 20ul contiennent 0,1% de BSA.

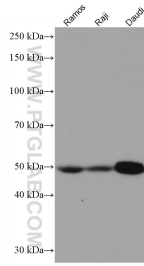
For technical support and original validation data for this product please contact:

T: 1 (888) 4PTGLAB (1-888-478-4522) (toll free  
in USA), or 1(312) 455-8498 (outside USA)

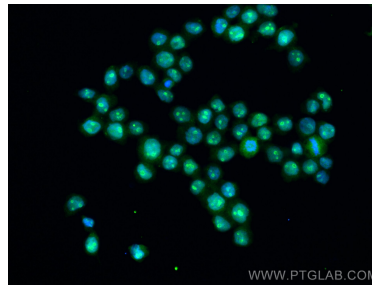
E: [proteintech@ptglab.com](mailto:proteintech@ptglab.com)  
W: [ptglab.com](http://ptglab.com)

This product is exclusively available under Proteintech Group brand and is not available to purchase from any other manufacturer.

## Données de validation sélectionnées



Various lysates were subjected to SDS PAGE followed by western blot with 67142-1-Ig (IRF8 antibody) at dilution of 1:3000 incubated at room temperature for 1.5 hours.



Immunofluorescent analysis of (4% PFA) fixed THP-1 cells using IRF8 antibody (67142-1-Ig, Clone: 3A10A4) at dilution of 1:800 and CoraLite®488-Conjugated AffiniPure Goat Anti-Mouse IgG(H+L).