

À des fins de recherche uniquement

# Anticorps Monoclonal anti-CDC25B

Numéro de catalogue: 67145-1-Ig



## Informations de base

|  |   |  |
|--|---|--|
| Numéro de catalogue:<br>67145-1-Ig   | Numéro d'acquisition GenBank:<br>BC006395   | Méthode de purification:<br>Purification par protéine A                              |
| Taille:<br>150ul, Concentration: 1600 µg/ml by<br>Nanodrop and 1000 µg/ml by Bradford<br>method using BSA as the standard; | Identification du gène (NCBI):<br>994<br>Nom complet:<br>cell division cycle 25 homolog B (S.<br>pombe) | CloneNo.:<br>1H3A4<br>Dilutions recommandées:<br>WB 1:5000-1:50000<br>IF 1:200-1:800 |
| Hôte:<br>Mouse   | MW calculé<br>65 kDa  |  |
| Isotype:<br>IgG2b  | MW observés:<br>69 kDa  |  |
| Immunogen Catalog Number:<br>AG27193   |   |  |

## Applications

|   |  |
|---|--|
| Applications testées:<br>IF, WB, ELISA          | Contrôles positifs:<br>WB : cellules Sp2/0, cellules Jurkat, cellules U-937<br>IF : cellules Jurkat, |
| Spécificité de l'espèce:<br>Humain, rat, souris |  |

## Informations générales

CDC25B, also named as CDC25HU2, belongs to the MPI phosphatase family. It is a tyrosine protein phosphatase which functions as a dosage-dependent inducer of mitotic progression. CDC25B directly dephosphorylates CDK1 and stimulates its kinase activity. The three isoforms seem to have a different level of activity.

## Stockage

Stockage:  
Stocker à -20 °C  
Tampon de stockage:  
PBS avec azoture de sodium à 0,02 % et glycérol à 50 % pH 7,3  
L'aliquotage n'est pas nécessaire pour le stockage à -20C

**\*\*\* Les 20ul contiennent 0,1% de BSA.**

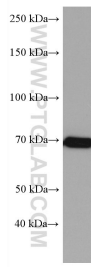
For technical support and original validation data for this product please contact:

T: 1 (888) 4PTGLAB (1-888-478-4522) (toll free  
in USA), or 1(312) 455-8498 (outside USA)

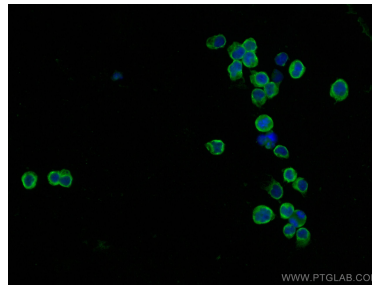
E: [proteintech@ptglab.com](mailto:proteintech@ptglab.com)  
W: [ptglab.com](http://ptglab.com)

This product is exclusively available under Proteintech Group brand and is not available to purchase from any other manufacturer.

## Données de validation sélectionnées



Sp2/0 cells were subjected to SDS PAGE followed by western blot with 67145-1-Ig (CDC25B antibody) at dilution of 1:10000 incubated at room temperature for 1.5 hours.



Immunofluorescent analysis of (4% PFA) fixed Jurkat cells using CDC25B antibody (67145-1-Ig, Clone: 1H3A4 ) at dilution of 1:400 and CoraLite®488-Conjugated AffiniPure Goat Anti-Mouse IgG(H+L).