

À des fins de recherche uniquement

Anticorps Monoclonal anti-FXYD1

Numéro de catalogue: 67150-1-Ig



Informations de base

Numéro de catalogue: 67150-1-Ig	Numéro d'acquisition GenBank: BC032800	Méthode de purification: Purification par protéine A
Taille: 150ul, Concentration: 1600 µg/ml by Nanodrop and 1000 µg/ml by Bradford method using BSA as the standard;	Identification du gène (NCBI): 5348	CloneNo.: 2C10G9
Hôte: Mouse	Nom complet: FXYD domain containing ion transport regulator 1	Dilutions recommandées: WB 1:1000-1:4000 IHC 1:50-1:500 IF 1:200-1:800
Isotype: IgG2a	MW calculé: 92 aa, 10 kDa	
Immunogen Catalog Number: AG25307	MW observés: 15 kDa	

Applications

Applications testées:

IF, IHC, WB, ELISA

Spécificité de l'espèce:

Humain, porc, souris

Remarque-IHC: il est suggéré de démasquer l'antigène avec un tampon de TE buffer pH 9.0; (*) À défaut, le démasquage de l'antigène peut être effectué avec un tampon citrate pH 6.0.

Contrôles positifs:

WB : tissu cardiaque humain, tissu cardiaque de porc, tissu de muscle squelettique humain

IHC : tissu cardiaque humain,

IF : tissu cardiaque de souris,

Informations générales

FXYD1, also named as PLM and Phospholemman, belongs to the FXYD family. FXYD1 induces a hyperpolarization-activated chloride current when expressed in *Xenopus* oocytes. It may have a functional role in muscle contraction. FXYD1 is a partner protein and regulator of the Na⁺,K⁺-ATPase (Na⁺,K⁺-pump). It may play a role in the acute regulation of the Na⁺,K⁺-ATPase response to exercise. (PMID: 20595385, 21653224)

Stockage

Stockage:

Stocker à -20 °C.

Tampon de stockage:

PBS avec azoture de sodium à 0,02 % et glycérol à 50 % pH 7,3

L'aliquotage n'est pas nécessaire pour le stockage à -20C

*** Les 20ul contiennent 0,1% de BSA.

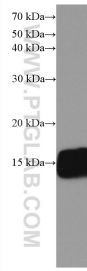
For technical support and original validation data for this product please contact:

T: 1 (888) 4PTGLAB (1-888-478-4522) (toll free in USA), or 1(312) 455-8498 (outside USA)

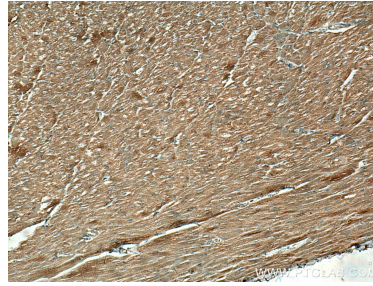
E: proteintech@ptglab.com
W: ptglab.com

This product is exclusively available under Proteintech Group brand and is not available to purchase from any other manufacturer.

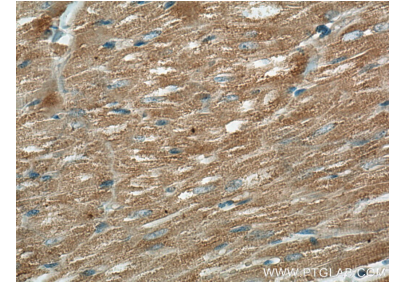
Données de validation sélectionnées



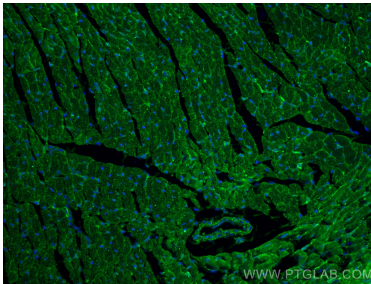
human heart tissue were subjected to SDS PAGE followed by western blot with 67150-1-Ig (FXVD1 antibody) at dilution of 1:2000 incubated at room temperature for 1.5 hours.



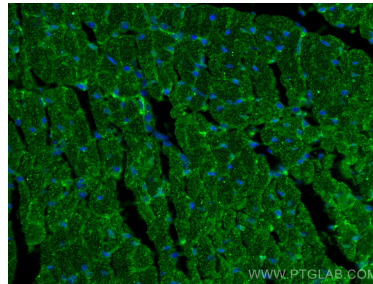
Immunohistochemical analysis of paraffin-embedded human heart tissue slide using 67150-1-Ig (FXVD1 antibody) at dilution of 1:200 (under 10x lens). Heat mediated antigen retrieval with Tris-EDTA buffer (pH 9.0).



Immunohistochemical analysis of paraffin-embedded human heart tissue slide using 67150-1-Ig (FXVD1 antibody) at dilution of 1:200 (under 40x lens). Heat mediated antigen retrieval with Tris-EDTA buffer (pH 9.0).



Immunofluorescent analysis of (4% PFA) fixed mouse heart tissue using FXVD1 antibody (67150-1-Ig, Clone: 2C10G9) at dilution of 1:400 and CoraLite®488-Conjugated AffiniPure Goat Anti-Mouse IgG(H+L).



Immunofluorescent analysis of (4% PFA) fixed mouse heart tissue using FXVD1 antibody (67150-1-Ig, Clone: 2C10G9) at dilution of 1:400 and CoraLite®488-Conjugated AffiniPure Goat Anti-Mouse IgG(H+L).