

À des fins de recherche uniquement

# Anticorps Monoclonal anti-FGL2

Numéro de catalogue: 67152-1-Ig **1 Publications**



## Informations de base

<b>Numéro de catalogue:</b> 67152-1-Ig	<b>Numéro d'acquisition GenBank:</b> BC017813	<b>Méthode de purification:</b> Purification par protéine A
<b>Taille:</b> 150ul , Concentration: 1700 µg/ml by Nanodrop and 1000 µg/ml by Bradford method using BSA as the standard;	<b>Identification du gène (NCBI):</b> 10875	<b>CloneNo.:</b> 2C9C5
<b>Hôte:</b> Mouse	<b>Nom complet:</b> fibrinogen-like 2	<b>Dilutions recommandées:</b> WB 1:2000-1:10000 IF 1:200-1:800
<b>Isotype:</b> IgG2b	<b>MW calculé:</b> 50 kDa	
<b>Immunogen Catalog Number:</b> AG28619	<b>MW observés:</b> 70 kDa	

## Applications

<b>Applications testées:</b> IF, WB, ELISA	<b>Contrôles positifs:</b> WB : cellules THP-1, cellules Jurkat IF : tissu splénique de souris,
<b>Demandes citées:</b> WB	
<b>Spécificité de l'espèce:</b> Humain	
<b>Espèces citées:</b> Humain	

## Informations générales

FGL2 (fibrinogen like protein 2) is a 70 kDa glycoprotein that belongs to the fibrinogen-related superfamily of proteins which are involved in coagulation, cell adhesion, and transendothelial migration. FGL2 is an important immune regulator of both innate and adaptive response. It is present on the surface of macrophages and endothelial cells, and can be constitutively secreted by CD4+ CD8+ T cell. FGL2 forms a tetrameric complex which is stabilized by interchain disulfide bonds and it exerts immunosuppressive effects on both T cell proliferation and dendritic cell maturation. The protein may play a role in physiologic functions at mucosal sites.

## Publications notables

Autrice	Pubmed ID	Journal	Application
Mingen Lin	37115693	J Clin Invest	WB

## Stockage

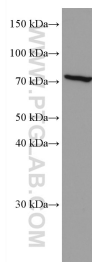
**Stockage:**  
Stocker à -20°C. Stable pendant un an après l'expédition.  
**Tampon de stockage:**  
PBS avec azoture de sodium à 0,02 % et glycérol à 50 % pH 7,3  
L'aliquotage n'est pas nécessaire pour le stockage à -20C

\*\*\* Les 20ul contiennent 0,1% de BSA.

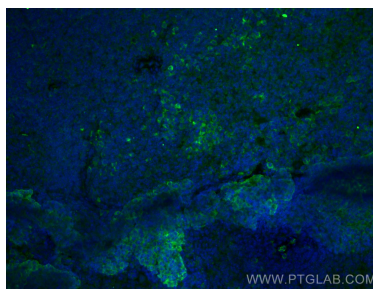
For technical support and original validation data for this product please contact:  
T: 1 (888) 4PTGLAB (1-888-478-4522) (toll free in USA), or 1(312) 455-8498 (outside USA)  
E: proteintech@ptglab.com  
W: ptglab.com

This product is exclusively available under Proteintech Group brand and is not available to purchase from any other manufacturer.

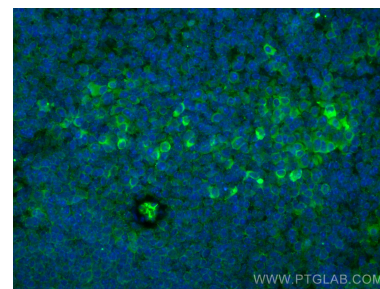
## Données de validation sélectionnées



THP-1 cells were subjected to SDS PAGE followed by western blot with 67152-1-Ig (FGL2 antibody) at dilution of 1:5000 incubated at room temperature for 1.5 hours.



Immunofluorescent analysis of (4% PFA) fixed mouse spleen tissue using FGL2 antibody (67152-1-Ig, Clone: 2C9C5) at dilution of 1:400 and CoraLite®488-Conjugated AffiniPure Goat Anti-Mouse IgG(H+L).



Immunofluorescent analysis of (4% PFA) fixed mouse spleen tissue using FGL2 antibody (67152-1-Ig, Clone: 2C9C5) at dilution of 1:400 and CoraLite®488-Conjugated AffiniPure Goat Anti-Mouse IgG(H+L).