

À des fins de recherche uniquement

Anticorps Monoclonal anti- CD138/Syndecan-1



Numéro de catalogue: 67155-1-Ig **2 Publications**

Informations de base

Numéro de catalogue: 67155-1-Ig	Numéro d'acquisition GenBank: BC008765	Méthode de purification: Purification par protéine A
Taille: 150ul , Concentration: 2108 µg/ml by Nanodrop and 1000 µg/ml by Bradford method using BSA as the standard;	Identification du gène (NCBI): 6382	CloneNo.: 4F3A8
Hôte: Mouse	Nom complet: syndecan 1	Dilutions recommandées: IHC 1:4000-1:16000 IF 1:200-1:800
Isotype: IgG2a	MW calculé 32.5 kDa	
Immunogen Catalog Number: AG0823		

Applications

Applications testées:

IF, IHC, ELISA

Demandes citées:

IF

Spécificité de l'espèce:

Humain

Espèces citées:

Humain

Remarque-IHC: il est suggéré de démasquer l'antigène avec un tampon de TE buffer pH 9,0; (*) A défaut, 'le démasquage de l'antigène peut être 'effectué avec un tampon citrate pH 6,0.

Contrôles positifs:

IHC : tissu d'amygdalite humain, tissu d'appendicite humain, tissu de lymphome humain, tissu de tumeur ovarienne humain

IF : tissu d'amygdalite humain,

Informations générales

Syndecan-1 (SDC1), also named CD138, is an integral membrane protein. It participates in cell proliferation, cell migration and cell-matrix interactions via its receptor for extracellular matrix proteins. It is a heparan sulfate proteoglycan expressed on the surface of, and actively shed by, myeloma cells. Altered syndecan-1 expression has been detected in several different tumor types. SDC1 was regarded as a useful marker for labeling normal and neoplastic plasma cells and plasmacytoid lymphomas.

Publications notables

Autrice	Pubmed ID	Journal	Application
Wang Zheng	35913916	Autophagy	IF
Pei-Fen Zhang	36746966	Nat Commun	IF

Stockage

Stockage:

Stocker à -20 °C

Tampon de stockage:

PBS avec azoture de sodium à 0,02 % et glycérol à 50 % pH 7,3

L'aliquotage n'est pas nécessaire pour le stockage à -20C

*** Les 20ul contiennent 0,1% de BSA.

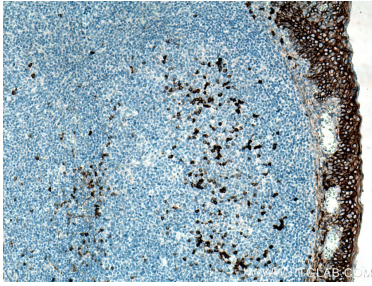
For technical support and original validation data for this product please contact:

T: 1 (888) 4PTGLAB (1-888-478-4522) (toll free
in USA), or 1(312) 455-8498 (outside USA)

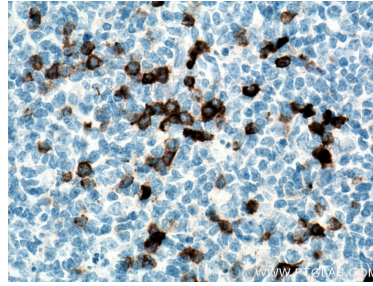
E: proteintech@ptglab.com
W: ptglab.com

This product is exclusively available under Proteintech Group brand and is not available to purchase from any other manufacturer.

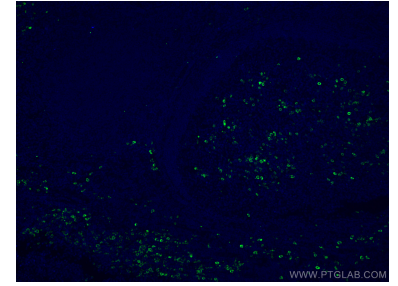
Données de validation sélectionnées



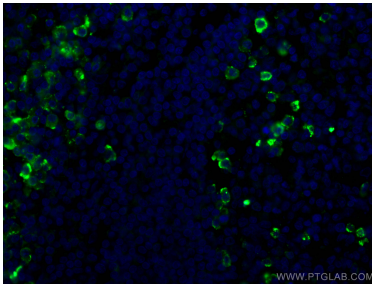
Immunohistochemical analysis of paraffin-embedded human tonsillitis tissue slide using 67155-1-Ig (SDC1, CD138 antibody) at dilution of 1:8000 (under 10x lens). Heat mediated antigen retrieval with Tris-EDTA buffer (pH 9.0).



Immunohistochemical analysis of paraffin-embedded human tonsillitis tissue slide using 67155-1-Ig (SDC1, CD138 antibody) at dilution of 1:8000 (under 40x lens). Heat mediated antigen retrieval with Tris-EDTA buffer (pH 9.0).



Immunofluorescent analysis of (4% PFA) fixed human tonsillitis tissue using CD138/Syndecan-1 antibody (67155-1-Ig, Clone: 4F3A8) at dilution of 1:400 and CoraLite®488-Conjugated AffiniPure Goat Anti-Mouse IgG(H+L).



Immunofluorescent analysis of (4% PFA) fixed human tonsillitis tissue using CD138/Syndecan-1 antibody (67155-1-Ig, Clone: 4F3A8) at dilution of 1:400 and CoraLite®488-Conjugated AffiniPure Goat Anti-Mouse IgG(H+L).