

À des fins de recherche uniquement

# Anticorps Monoclonal anti-GBP1

Numéro de catalogue: 67161-1-Ig **2 Publications**



## Informations de base

Numéro de catalogue: 67161-1-Ig	Numéro d'acquisition GenBank: BC002666	Méthode de purification: Purification par protéine A
Taille: 150ul, Concentration: 2100 µg/ml by Nanodrop and 1000 µg/ml by Bradford method using BSA as the standard;	Identification du gène (NCBI): 2633	CloneNo.: 2A10E8
Hôte: Mouse	Nom complet: GTP binding protein 1	Dilutions recommandées: WB 1:5000-1:50000
Isotype: IgG2b	MW calculé: 68 kDa	
Immunogen Catalog Number: AG7767	MW observés: 68 kDa	

## Applications

Applications testées: WB, ELISA	Contrôles positifs: WB : cellules HeLa, cellules HEK-293, cellules HUVEC, tissu placentaire humain, tissu splénique de porc, tissu splénique de rat
Demandes citées: IF, WB	
Spécificité de l'espèce: Humain, porc, rat	
Espèces citées: Humain	

## Informations générales

Guanylate binding protein 1 (GBP1) belongs to the dynamin superfamily of large GTPases. The expression of GBP1 is induced by IFN and GBP1 is characterized by its ability to specifically bind guanine nucleotides such as GMP, GDP, and GTP and its ability to hydrolyze GTP to GDP and GMP. GBP1 is induced in response to type I and type II IFNs and as such plays a role in protective immunity against a spectrum of intracellular pathogens ranging from viruses to bacteria to protozoa, such as negative-strand RNA Rhabdovirus, vesicular stomatitis virus and the positive-strand RNA Picomavirus, encephalomyocarditis virus in cultured cells, the inhibition of Chlamydia trachomatis, Toxoplasma gondii, and Salmonella enterica.

## Publications notables

Autrice	Pubmed ID	Journal	Application
Tianle Gu	34732469	J Immunol	WB, IF
Yinnan Meng	33552086	Front Immunol	WB, IF

## Stockage

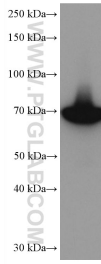
Stockage:  
Stocker à -20 °C.  
Tampon de stockage:  
PBS avec azoture de sodium à 0,02 % et glycérol à 50 % pH 7,3  
L'aliquotage n'est pas nécessaire pour le stockage à -20C

**\*\*\* Les 20ul contiennent 0,1% de BSA.**

For technical support and original validation data for this product please contact:  
T: 1 (888) 4PTGLAB (1-888-478-4522) (toll free in USA), or 1(312) 455-8498 (outside USA)  
E: proteintech@ptglab.com  
W: ptglab.com

This product is exclusively available under Proteintech Group brand and is not available to purchase from any other manufacturer.

## Données de validation sélectionnées



HeLa cells were subjected to SDS PAGE followed by western blot with 67161-1-Ig (GBP1 antibody) at dilution of 1:10000 incubated at room temperature for 1.5 hours.