

À des fins de recherche uniquement

Anticorps Monoclonal anti-HIP1

Numéro de catalogue: 67163-1-Ig

Phare



Informations de base

Numéro de catalogue:	67163-1-Ig	Numéro d'acquisition GenBank:	BC110545	Méthode de purification:	Purification par protéine G
Taille:	150ul, Concentration: 1800 µg/ml by Nanodrop and 1000 µg/ml by Bradford method using BSA as the standard;	Identification du gène (NCBI):	3092	CloneNo.:	3D3G3
Hôte:	Mouse	Nom complet:	huntingtin interacting protein 1	Dilutions recommandées:	WB 1:1000-1:6000 IHC 1:150-1:600 IF 1:200-1:800
Isotype:	IgG1	MW calculé	1037 aa, 116 kDa		
Immunogen Catalog Number:	AG17982	MW observés:	110-120 kDa		

Applications

Applications testées:	IF, IHC, WB, ELISA	Contrôles positifs:	
Spécificité de l'espèce:	Humain, porc, souris	WB :	cellules HeLa, cellules A549, cellules PC-3, tissu cérébral de porc, tissu cérébral de souris
Remarque-IHC:	il est suggéré de démasquer l'antigène avec un tampon de TE buffer pH 9.0 ; (*) À défaut, 'le démasquage de l'antigène peut être effectué avec un tampon citrate pH 6,0.	IHC :	tissu de cancer du côlon humain, tissu de cancer de la prostate humain
		IF :	tissu de cancer du côlon humain,

Informations générales

HIP1 (huntingtin interacting protein-1) is a endocytic protein that plays a role in clathrin-mediated endocytosis and trafficking. HIP1 can interact with huntingtin (HTT) protein whose mutations cause Huntington's disease (HD), thus gets involved in neurodegeneration. By stabilizing receptor tyrosine kinases following ligand-induced endocytosis, HIP1 may act to promote cell survival. HIP1 is overexpressed in a variety of human cancers and may be a potential predictor for cancer progression and prognosis.

Stockage

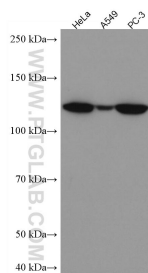
Stockage:
Stocker à -20°C. Stable pendant un an après l'expédition.
Tampon de stockage:
PBS avec azoture de sodium à 0,02 % et glycérol à 50 % pH 7,3
L'aliquotage n'est pas nécessaire pour le stockage à -20C

*** Les 20ul contiennent 0,1% de BSA.

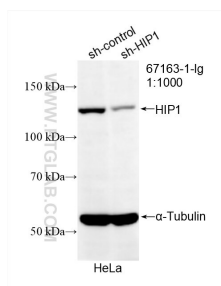
For technical support and original validation data for this product please contact:
T: 1 (888) 4PTGLAB (1-888-478-4522) (toll free in USA), or 1(312) 455-8498 (outside USA)
E: proteintech@ptglab.com
W: ptglab.com

This product is exclusively available under Proteintech Group brand and is not available to purchase from any other manufacturer.

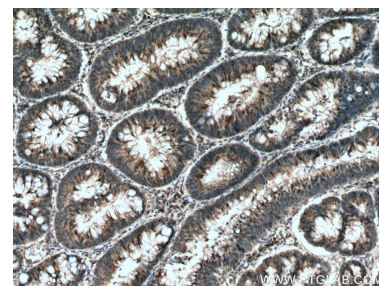
Données de validation sélectionnées



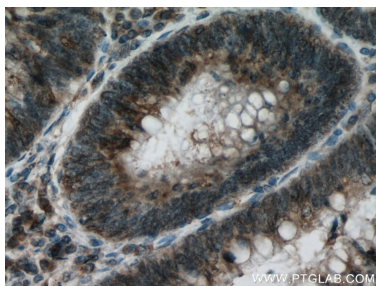
Various lysates were subjected to SDS PAGE followed by western blot with 67163-1-Ig (HIP1 antibody) at dilution of 1:3000 incubated at room temperature for 1.5 hours.



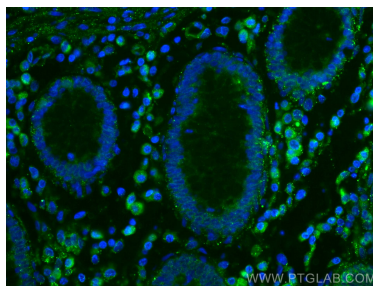
WB result of HIP1 antibody (67163-1-Ig; 1:1000; incubated at room temperature for 1.5 hours) with sh-Control and sh-HIP1 transfected HeLa cells.



Immunohistochemical analysis of paraffin-embedded human colon cancer tissue slide using 67163-1-Ig (HIP1 antibody) at dilution of 1:300 (under 10x lens). Heat mediated antigen retrieval with Tris-EDTA buffer (pH 9.0).



Immunohistochemical analysis of paraffin-embedded human colon cancer tissue slide using 67163-1-Ig (HIP1 antibody) at dilution of 1:300 (under 40x lens). Heat mediated antigen retrieval with Tris-EDTA buffer (pH 9.0).



Immunofluorescent analysis of (4% PFA) fixed human colon cancer tissue using HIP1 antibody (67163-1-Ig, Clone: 3D3G3) at dilution of 1:400 and CoraLite® 488-Conjugated AffiniPure Goat Anti-Mouse IgG(H+L).