

À des fins de recherche uniquement

Anticorps Monoclonal anti-ACLY

Numéro de catalogue: 67166-1-Ig **2 Publications**



Informations de base

Numéro de catalogue: 67166-1-Ig	Numéro d'acquisition GenBank: BC006195	Méthode de purification: Purification par protéine A
Taille: 150ul , Concentration: 1100 µg/ml by 47 Nanodrop and 1000 µg/ml by Bradford method using BSA as the standard;	Identification du gène (NCBI): ATP citrate lyase	CloneNo.: 1E10D5
Hôte: Mouse	Nom complet: ATP citrate lyase	Dilutions recommandées: WB 1:1000-1:10000 IHC 1:1000-1:4000 IF 1:50-1:500
Isotype: IgM	MW calculé: 121 kDa	
Immunogen Catalog Number: AG7709	MW observés: 120 kDa	

Applications

Applications testées:

IF, IHC, WB, ELISA

Demandes citées:

IF, IP, WB

Spécificité de l'espèce:

Humain, rat, souris

Espèces citées:

Humain

Remarque-IHC: il est suggéré de démasquer l'antigène avec un tampon de TE buffer pH 9,0; (*) A défaut, 'le démasquage de l'antigène peut être 'effectué avec un tampon citrate pH 6,0.

Contrôles positifs:

WB : cellules Jurkat, cellules HSC-T6, cellules MCF-7

IHC : tissu de cancer de la prostate humain,

IF : cellules A549,

Informations générales

ACLY(ATP-citrate synthase) is also named as ACL. It is the primary enzyme responsible for the synthesis of cytosolic acetyl-CoA. ACLY serves as not only a target in oxygenated cells for suppression of lipid synthesis and histone acetylation, but also as a susceptible target in hypoxic cells to restore inhibition of glycolysis. In nonsmall cell lung carcinoma and hepatocellular carcinoma, ACLY is overexpressed compared with normal parenchyma suggesting that ACLY may represent a common target among highly malignant tumors(PMID:19795461). This protein has 2 isoforms produced by alternative splicing.

Publications notables

Autrice	Pubmed ID	Journal	Application
Yu Hu	34539243	Mediators Inflamm	WB
Feifei Zhou	36241648	Cell Death Dis	WB,IF,IP

Stockage

Stockage:

Stocker à -20 °C.

Tampon de stockage:

PBS avec azoture de sodium à 0,02 % et glycérol à 50 % pH 7,3

L'aliquotage n'est pas nécessaire pour le stockage à -20C

*** Les 20ul contiennent 0,1% de BSA.

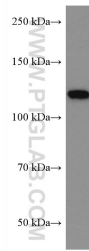
For technical support and original validation data for this product please contact:

T: 1 (888) 4PTGLAB (1-888-478-4522) (toll free in USA), or 1(312) 455-8498 (outside USA)

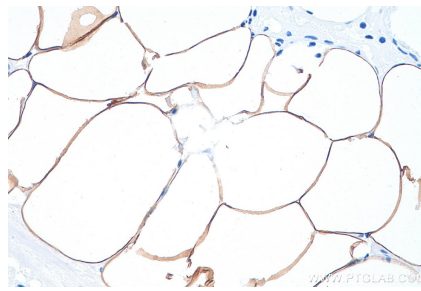
E: proteintech@ptglab.com
W: ptglab.com

This product is exclusively available under Proteintech Group brand and is not available to purchase from any other manufacturer.

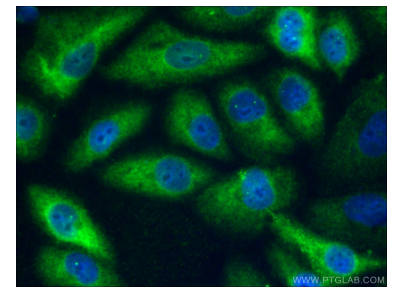
Données de validation sélectionnées



Jurkat cells were subjected to SDS PAGE followed by western blot with 67166-1-Ig (ACLY antibody) at dilution of 1:10000 incubated at room temperature for 1.5 hours.



Immunohistochemical analysis of paraffin-embedded human prostate cancer tissue slide using 67166-1-Ig (ACLY antibody) at dilution of 1:2000 (under 40x lens). Heat mediated antigen retrieval with Tris-EDTA buffer (pH 9.0).



Immunofluorescent analysis of (-20°C Ethanol) fixed A549 cells using 67166-1-Ig (ACLY antibody) at dilution of 1:100 and CoraLite488-Conjugated AffiniPure Goat Anti-Mouse IgG(H+L).