

À des fins de recherche uniquement

Anticorps Monoclonal anti-CUL2

Numéro de catalogue: 67175-1-Ig Phare



Informations de base

Numéro de catalogue: 67175-1-Ig	Numéro d'acquisition GenBank: BC009591	Méthode de purification: Purification par protéine G
Taille: 150ul, Concentration: 2300 µg/ml by Nanodrop and 1000 µg/ml by Bradford method using BSA as the standard;	Identification du gène (NCBI): 8453	CloneNo.: 1A6G9
Hôte: Mouse	Nom complet: cullin 2	Dilutions recommandées: WB 1:5000-1:50000 IHC 1:250-1:1000 IF 1:200-1:800
Isotype: IgG1	MW calculé: 87 kDa	
Immunogen Catalog Number: AG28654	MW observés: 85-90 kDa	

Applications

Applications testées:

IF, IHC, WB, ELISA

Spécificité de l'espèce:

Humain, rat

Remarque-IHC: il est suggéré de démasquer l'antigène avec un tampon de TE buffer pH 9.0; (*) À défaut, 'le démasquage de l'antigène peut être effectué avec un tampon citrate pH 6,0.

Contrôles positifs:

WB : cellules MCF-7, cellules HEK-293, cellules HeLa, cellules HSC-T6, cellules PC-3, cellules Raji

IHC : tissu de cancer du sein humain, tissu de cancer de la prostate humain

IF : cellules HeLa,

Informations générales

The cullin family proteins are scaffold proteins for the Ring finger type E3 ligases, participating in the proteolysis through the ubiquitin-proteasome pathway. Humans express seven cullin proteins: CUL1-3, CUL4A, CUL4B, CUL5, and CUL7. Each cullin protein can form an E3 ligase similar to the prototype Ring-type E3 ligase Skp1-CUL1-F-box complex. The Cullin-RING-finger type E3 ligases are important regulators in early embryonic development, as highlighted by genetic studies demonstrating that knock-out of CUL1, CUL3, or CUL4A in mice results in early embryonic lethality.

Stockage

Stockage:

Stocker à -20°C. Stable pendant un an après l'expédition.

Tampon de stockage:

PBS avec azoture de sodium à 0,02 % et glycérol à 50 % pH 7,3

L'aliquotage n'est pas nécessaire pour le stockage à -20C

*** Les 20ul contiennent 0,1% de BSA.

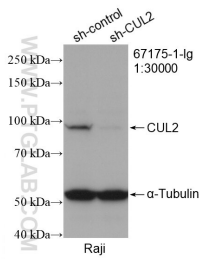
For technical support and original validation data for this product please contact:

T: 1 (888) 4PTGLAB (1-888-478-4522) (toll free in USA), or 1(312) 455-8498 (outside USA)

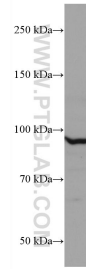
E: proteintech@ptglab.com
W: ptglab.com

This product is exclusively available under Proteintech Group brand and is not available to purchase from any other manufacturer.

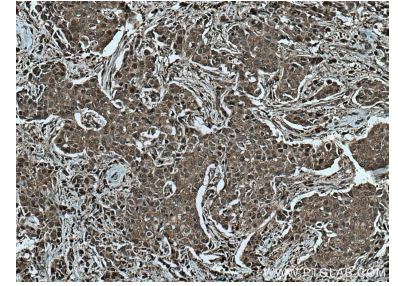
Données de validation sélectionnées



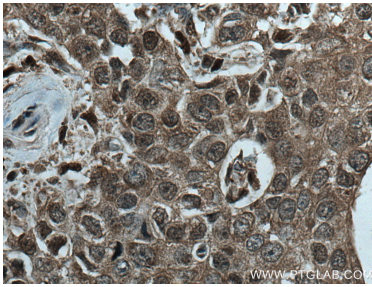
WB result of CUL2 antibody (67175-1-Ig; 1:30000; incubated at room temperature for 1.5 hours) with sh-Control and sh-CUL2 transfected Raji cells.



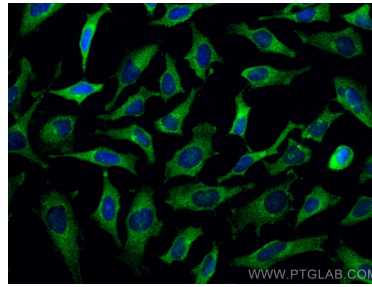
MCF-7 cells were subjected to SDS PAGE followed by western blot with 67175-1-Ig (CUL2 antibody) at dilution of 1:10000 incubated at room temperature for 1.5 hours.



Immunohistochemical analysis of paraffin-embedded human breast cancer tissue slide using 67175-1-Ig (CUL2 antibody) at dilution of 1:500 (under 10x lens). Heat mediated antigen retrieval with Tris-EDTA buffer (pH 9.0).



Immunohistochemical analysis of paraffin-embedded human breast cancer tissue slide using 67175-1-Ig (CUL2 antibody) at dilution of 1:500 (under 40x lens). Heat mediated antigen retrieval with Tris-EDTA buffer (pH 9.0).



Immunofluorescent analysis of (-20°C Methanol) fixed HeLa cells using CUL2 antibody (67175-1-Ig, Clone: 1A6G9) at dilution of 1:400 and Coralite® 488-Conjugated AffiniPure Goat Anti-Mouse IgG(H+L).