

À des fins de recherche uniquement

Anticorps Monoclonal anti-GPI

Numéro de catalogue: 67178-1-Ig Phare



Informations de base

Numéro de catalogue: 67178-1-Ig	Numéro d'acquisition GenBank: BC004982	Méthode de purification: Purification par protéine G
Taille: 150ul , Concentration: 1800 µg/ml by Nanodrop and 1000 µg/ml by Bradford method using BSA as the standard;	Identification du gène (NCBI): 2821	CloneNo.: 2F11E4
Hôte: Mouse	Nom complet: glucose phosphate isomerase	Dilutions recommandées: WB 1:5000-1:50000 IHC 1:500-1:2000 IF 1:50-1:500
Isotype: IgG1	MW calculé: 63 kDa	
Immunogen Catalog Number: AG7419	MW observés: 55-64 kDa	

Applications

Applications testées:

IF, IHC, WB, ELISA

Spécificité de l'espèce:

Humain

Remarque-IHC: il est suggéré de démasquer l'antigène avec un tampon de TE buffer pH 9.0; (*) À défaut, 'le démasquage de l'antigène peut être 'effectué avec un tampon citrate pH 6,0.

Contrôles positifs:

WB : cellules HepG2, cellules HEK-293, cellules HeLa, cellules LNCaP, cellules PC-3

IHC : tissu de cancer du poumon humain,

IF : cellules PC-3,

Informations générales

GPI (Glucose-6-phosphate isomerase), which is also named as autocrine motility factor (AMF), phosphoglucose isomerase (PGI), Neuroleukin (NLK), phosphohexose isomerase (PHI) or sperm antigen 36 (SA-36), is a housekeeping cytosolic enzyme that plays a key role in both glycolysis and gluconeogenesis pathways. It is also a multifunctional protein that displays cytokine properties, eliciting mitogenic, motogenic, and differentiation activities, and has been implicated in tumor progression and metastasis (PMID:12783864, 19603112). This protein can exist as a homodimer in the catalytically active form and a monomer in the secreted form (PMID:11371164). It has 2 isoforms produced by alternative splicing with the calculated molecular mass of 63-64 kDa, and an apparent molecular mass of 55 and 64 kDa under non-reducing and reducing conditions, respectively (PMID: 19603112, 11004567).

Stockage

Stockage:

Stocker à -20 °C.

Tampon de stockage:

PBS avec azoture de sodium à 0,02 % et glycérol à 50 % pH 7,3

L'aliquotage n'est pas nécessaire pour le stockage à -20C

*** Les 20ul contiennent 0,1% de BSA.

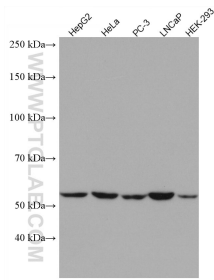
For technical support and original validation data for this product please contact:

T: 1 (888) 4PTGLAB (1-888-478-4522) (toll free in USA), or 1(312) 455-8498 (outside USA)

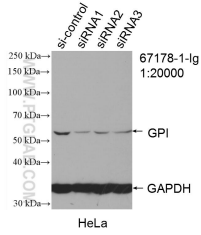
E: proteintech@ptglab.com
W: ptglab.com

This product is exclusively available under Proteintech Group brand and is not available to purchase from any other manufacturer.

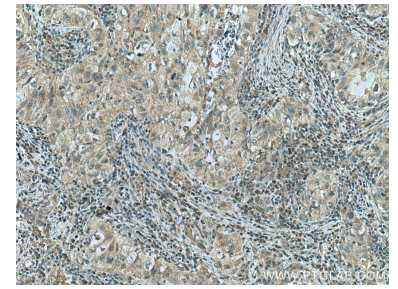
Données de validation sélectionnées



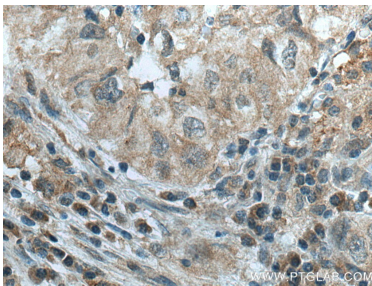
Various lysates were subjected to SDS PAGE followed by western blot with 67178-1-Ig (GPI antibody) at dilution of 1:10000 incubated at room temperature for 1.5 hours.



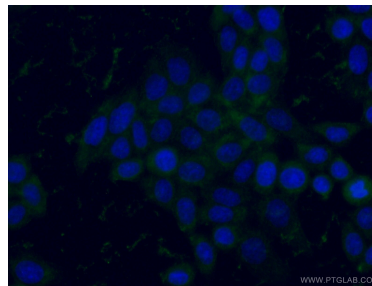
WB result of GPI antibody (67178-1-Ig: 1:20000; incubated at room temperature for 1.5 hours) with sh-Control and sh-GPI transfected HeLa cells.



Immunohistochemical analysis of paraffin-embedded human lung cancer tissue slide using 67178-1-Ig (GPI antibody) at dilution of 1:1000 (under 10x lens). Heat mediated antigen retrieval with Tris-EDTA buffer (pH 9.0).



Immunohistochemical analysis of paraffin-embedded human lung cancer tissue slide using 67178-1-Ig (GPI antibody) at dilution of 1:1000 (under 40x lens). Heat mediated antigen retrieval with Tris-EDTA buffer (pH 9.0).



Immunofluorescent analysis of (-20°C Ethanol) fixed PC-3 cells using 67178-1-Ig (GPI antibody) at dilution of 1:50 and Coralite488-Conjugated AffiniPure Goat Anti-Mouse IgG(H+L).