

À des fins de recherche uniquement

Anticorps Monoclonal anti-Cytohesin 2



Numéro de catalogue: 67185-1-Ig

Phare

2 Publications

Informations de base

Numéro de catalogue: 67185-1-Ig	Numéro d'acquisition GenBank: BC004361	Méthode de purification: Purification par protéine A
Taille: 150ul , Concentration: 1000 µg/ml by Bradford method using BSA as the standard;	Identification du gène (NCBI): 9266	CloneNo.: 3A7A1
Hôte: Mouse	Nom complet: cytohesin 2	Dilutions recommandées: WB 1:5000-1:10000 IHC 1:500-1:2000 IF 1:50-1:500
Isotype: IgG2a	MW calculé: 47 kDa	
Immunogen Catalog Number: AG21279	MW observés: 47 kDa	

Applications

Applications testées:

IF, IHC, WB, ELISA

Demandes citées:

IF, WB

Spécificité de l'espèce:

Humain, rat, souris

Espèces citées:

Humain, souris

Remarque-IHC: il est suggéré de démasquer l'antigène avec un tampon de TE buffer pH 9,0; (*) A défaut, 'le démasquage de l'antigène peut être 'effectué avec un tampon citrate pH 6,0.

Contrôles positifs:

WB : cellules HepG2, cellules 4T1, cellules A549, cellules HEK-293, cellules HeLa, cellules HSC-T6, cellules MCF-7, cellules NIH/3T3, cellules PC-12

IHC : tissu de cancer du foie humain, tissu de cancer du côlon humain

IF : cellules HeLa,

Informations générales

Pleckstrin homology, Sec7 and coiled/coil domains 2 (PSCD2) is a member of the PSCD family. Members of this family have identical structural organization that consists of an N-terminal coiled-coil motif, a central Sec7 domain, and a C-terminal pleckstrin homology (PH) domain. The coiled-coil motif is involved in homodimerization, the Sec7 domain contains guanine-nucleotide exchange protein (GEP) activity, and the PH domain interacts with phospholipids and is responsible for association of PSCDs with membranes. Members of this family appear to mediate the regulation of protein sorting and membrane trafficking. PSCD2 exhibits GEP activity in vitro with small G proteins ARF1, ARF3, and ARF6.

Publications notables

Autrice	Pubmed ID	Journal	Application
Akikazu Harada	34590580	Elife	IF
Yimin Dong	36252772	Pharmacol Res	WB

Stockage

Stockage:

Stocker à -20°C. Stable pendant un an après l'expédition.

Tampon de stockage:

PBS avec azoture de sodium à 0,02 % et glycérol à 50 % pH 7,3

L'aliquotage n'est pas nécessaire pour le stockage à -20C

*** Les 20ul contiennent 0,1% de BSA.

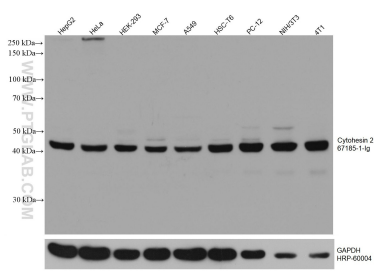
For technical support and original validation data for this product please contact:

T: 1 (888) 4PTGLAB (1-888-478-4522) (toll free in USA), or 1(312) 455-8498 (outside USA)

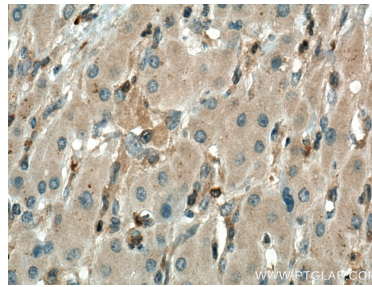
E: proteintech@ptglab.com
W: ptglab.com

This product is exclusively available under Proteintech Group brand and is not available to purchase from any other manufacturer.

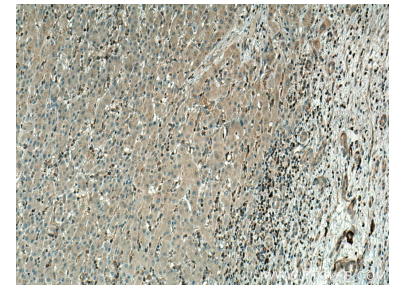
Données de validation sélectionnées



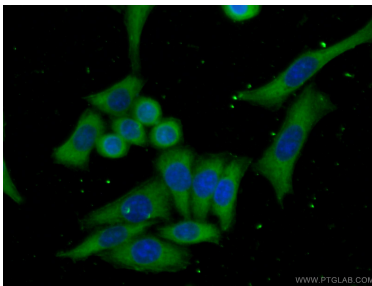
Various lysates were subjected to SDS PAGE followed by western blot with 67185-1-Ig (CYTH2 antibody) at dilution of 1:10000 incubated at room temperature for 1.5 hours. The membrane was stripped and reblotted with HRP-conjugated GAPDH Monoclonal antibody (HRP-60004) as loading control.



Immunohistochemical analysis of paraffin-embedded human liver cancer tissue slide using 67185-1-Ig (Cytohesin 2 antibody) at dilution of 1:1000 (under 40x lens). Heat mediated antigen retrieval with Tris-EDTA buffer (pH 9.0).



Immunohistochemical analysis of paraffin-embedded human liver cancer tissue slide using 67185-1-Ig (Cytohesin 2 antibody) at dilution of 1:1000 (under 10x lens). Heat mediated antigen retrieval with Tris-EDTA buffer (pH 9.0).



Immunofluorescent analysis of (-20°C Ethanol) fixed HeLa cells using 67185-1-Ig (Cytohesin 2 antibody) at dilution of 1:100 and CoraLite488-Conjugated AffiniPure Goat Anti-Mouse IgG(H+L).