

À des fins de recherche uniquement

Anticorps Monoclonal anti-ENO1

Numéro de catalogue: 67187-1-Ig



Informations de base

Numéro de catalogue:

67187-1-Ig

Taille:

150ul, Concentration: 200 µg/ml by Bradford method using BSA as the standard;

Hôte:

Mouse

Isotype:

IgM

Immunogen Catalog Number:

AG17518

Numéro d'acquisition GenBank:

BC015641

Identification du gène (NCBI):

2023

Nom complet:

enolase 1, (alpha)

MW calculé

47 kDa

MW observés:

47 kDa

Méthode de purification:

Chromatographie d'affinité thiophilique

CloneNo.:

1D6E8

Dilutions recommandées:

WB 1:5000-1:50000

IF 1:50-1:500

Applications

Applications testées:

IF, WB, ELISA

Spécificité de l'espèce:

Humain, porc, rat, souris

Contrôles positifs:

WB : cellules HEK-293, cellules HeLa, cellules Jurkat, cellules PC-3, tissu cérébral de porc, tissu cérébral de rat, tissu cérébral de souris

IF : cellules HeLa,

Informations générales

ENO1, also named as NNE, ENO1L1, MBPB1, MPB1 and MBP1, belongs to the enolase family. ENO1 is a metabolic enzyme involved in the synthesis of pyruvate. It also acts as a plasminogen receptor and mediates the activation of plasmin and extracellular matrix degradation. In tumor cells, ENO1 is up-regulated and supports the Warburg effect; it is expressed at the cell surface, where it promotes cancer invasion, and is subjected to a specific array of post-translational modifications, namely acetylation, methylation and phosphorylation. ENO1 overexpression and post-translational modifications could be of diagnostic and prognostic value in many cancer types. (PMID: 27814656)

Stockage

Stockage:

Stocker à -20°C. Stable pendant un an après l'expédition.

Tampon de stockage:

PBS avec azoture de sodium à 0,02 % et glycérol à 50 % pH 7,3

L'aliquotage n'est pas nécessaire pour le stockage à -20C

*** Les 20ul contiennent 0,1% de BSA.

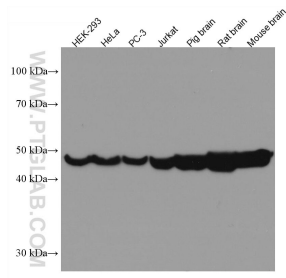
For technical support and original validation data for this product please contact:

T: 1 (888) 4PTGLAB (1-888-478-4522) (toll free in USA), or 1(312) 455-8498 (outside USA)

E: proteintech@ptglab.com
W: ptglab.com

This product is exclusively available under Proteintech Group brand and is not available to purchase from any other manufacturer.

Données de validation sélectionnées



Immunofluorescent analysis of (-20°C Ethanol) fixed HeLa cells using ENO1 antibody (67187-1-Ig, Clone: 1D6E8) at dilution of 1:100 and CoraLite®488-Conjugated AffiniPure Goat Anti-Mouse IgG(H+L).

Various lysates were subjected to SDS PAGE followed by western blot with 67187-1-Ig (ENO1 antibody) at dilution of 1:10000 incubated at room temperature for 1.5 hours.