

À des fins de recherche uniquement

Anticorps Monoclonal anti-KIF20A

Numéro de catalogue: 67190-1-Ig **4 Publications**



Informations de base

| | | |
|--|--|---|
| Numéro de catalogue: 67190-1-Ig | Numéro d'acquisition GenBank: BC012999 | Méthode de purification: Purification par protéine A |
| Taille: 150ul , Concentration: 2000 µg/ml by Nanodrop and 1000 µg/ml by Bradford method using BSA as the standard; | Identification du gène (NCBI): 10112 | CloneNo.: 2A8E3 |
| Hôte: Mouse | Nom complet: kinesin family member 20A | Dilutions recommandées: WB 1:5000-1:50000 IHC 1:200-1:800 IF 1:50-1:500 |
| Isotype: IgG1 | MW calculé: 890 aa, 100 kDa | |
| Immunogen Catalog Number: AG8916 | MW observés: 100 kDa | |

Applications

Applications testées:

IF, IHC, WB, ELISA

Demandes citées:

IF, IHC, WB

Spécificité de l'espèce:

Humain, rat, souris

Espèces citées:

Humain

Remarque-IHC: il est suggéré de démasquer l'antigène avec un tampon de **TE buffer pH 9,0; (*) A défaut, 'le démasquage de l'antigène peut être 'effectué avec un tampon citrate pH 6,0.**

Contrôles positifs:

WB : cellules HepG2, cellules HEK-293, cellules HeLa, cellules HL-60, cellules HSC-T6, cellules Jurkat, cellules NIH/3T3, cellules PC-12

IHC : tissu de cancer du sein humain, tissu de cancer du pancréas humain

IF : cellules HeLa,

Informations générales

KIF20A, also known as RAB6KIFL or MKlp2, is a kinesin originally identified as a binding partner for the rab6 GTPase involved in protein transport at the Golgi apparatus. KIF20A belongs to a large family of motor proteins that accumulate in mitotic cells and is required for normal cell division. KIF20A is thought to be involved in carcinogenesis. In normal tissues KIF20A is almost undetectable while it is overexpressed in various cancers. KIF20A has been identified as a novel promising candidate for anticancer immunotherapy.

Publications notables

| Autrice | Pubmed ID | Journal | Application |
|---------------|-----------|----------------|-------------|
| Bingteng Xie | 35648393 | Cancer Res | IF |
| Xuchen Huang | 37637711 | Int J Gen Med | IHC |
| Seemon Coomar | 37255411 | Mol Cancer Res | WB |

Stockage

Stockage:

Stocker à -20°C. Stable pendant un an après l'expédition.

Tampon de stockage:

PBS avec azoture de sodium à 0,02 % et glycérol à 50 % pH 7,3

L'aliquotage n'est pas nécessaire pour le stockage à -20C

***** Les 20ul contiennent 0,1% de BSA.**

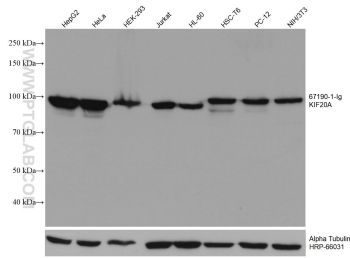
For technical support and original validation data for this product please contact:

T: 1 (888) 4PTGLAB (1-888-478-4522) (toll free in USA), or 1(312) 455-8498 (outside USA)

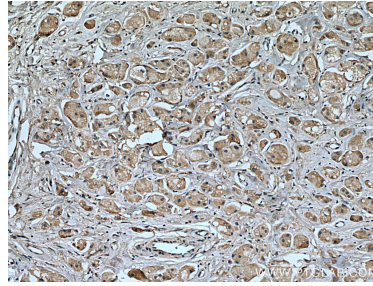
E: proteintech@ptglab.com
W: ptglab.com

This product is exclusively available under Proteintech Group brand and is not available to purchase from any other manufacturer.

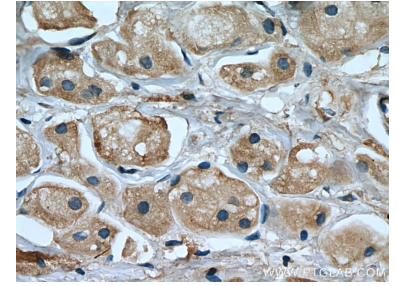
Données de validation sélectionnées



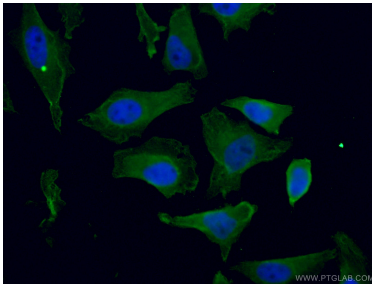
Various lysates were subjected to SDS PAGE followed by western blot with 67190-1-Ig (KIF20A antibody) at dilution of 1:10000 incubated at room temperature for 1.5 hours. The membrane was stripped and reblotted with HRP-conjugated Alpha Tubulin Monoclonal antibody (HRP-66031) as loading control.



Immunohistochemical analysis of paraffin-embedded human breast cancer tissue slide using 67190-1-Ig (KIF20A antibody) at dilution of 1:400 (under 10x lens). Heat mediated antigen retrieval with Tris-EDTA buffer (pH 9.0).



Immunohistochemical analysis of paraffin-embedded human breast cancer tissue slide using 67190-1-Ig (KIF20A antibody) at dilution of 1:400 (under 40x lens). Heat mediated antigen retrieval with Tris-EDTA buffer (pH 9.0).



Immunofluorescent analysis of (4% PFA) fixed HeLa cells using 67190-1-Ig (KIF20A antibody) at dilution of 1:100 and Coralite488-Conjugated AffiniPure Goat Anti-Mouse IgG(H+L).