

À des fins de recherche uniquement

# Anticorps Monoclonal anti-PEPD

Numéro de catalogue: 67202-1-Ig **1 Publications**



## Informations de base

Numéro de catalogue: 67202-1-Ig	Numéro d'acquisition GenBank: BC015027	Méthode de purification: Purification par protéine G
Taille: 150ul , Concentration: 2100 µg/ml by Nanodrop and 1000 µg/ml by Bradford method using BSA as the standard;	Identification du gène (NCBI): 5184	CloneNo.: 1H2A1
Hôte: Mouse	Nom complet: peptidase D	Dilutions recommandées: WB 1:1000-1:4000 IHC 1:250-1:1000
Isotype: IgG1	MW calculé: 493 aa, 55 kDa	
Immunogen Catalog Number: AG28713	MW observés: 55 kDa	

## Applications

### Applications testées:

IHC, WB, ELISA

### Demandes citées:

WB

### Spécificité de l'espèce:

Humain

### Espèces citées:

Humain

**Remarque-IHC: il est suggéré de démasquer l'antigène avec un tampon de TE buffer pH 9,0; (\*) A défaut, 'le démasquage de l'antigène peut être 'effectué avec un tampon citrate pH 6,0.**

### Contrôles positifs:

WB : cellules LNCaP, cellules HEK-293, cellules HeLa, cellules Jurkat, cellules NCCIT, tissu placentaire humain

IHC : tissu de cancer du sein humain,

## Informations générales

PEPD, also named as PRD, Prolidase, X-Pro dipeptidase, Imidodipeptidase, Peptidase D and Proline dipeptidase, belongs to the peptidase M24B family and Eukaryotic-type prolidase subfamily. PEPD splits dipeptides with a prolyl or hydroxyprolyl residue in the C-terminal position. It plays an important role in collagen metabolism because the high level of iminoacids in collagen. Defects in PEPD are a cause of prolidase deficiency (PD). PEPD is considered as the most promising candidate genes for altering AAA risk, based on gene function, association evidence, gene expression, and protein expression. (PMID:21247474)

## Publications notables

Autrice	Pubmed ID	Journal	Application
Jie Chen	34976977	Front Bioeng Biotechnol	WB

## Stockage

### Stockage:

Stocker à -20 °C

### Tampon de stockage:

PBS avec azoture de sodium à 0,02 % et glycérol à 50 % pH 7,3

L'aliquotage n'est pas nécessaire pour le stockage à -20C

\*\*\* Les 20ul contiennent 0,1% de BSA.

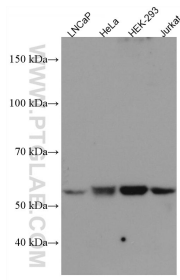
For technical support and original validation data for this product please contact:

T: 1 (888) 4PTGLAB (1-888-478-4522) (toll free in USA), or 1(312) 455-8498 (outside USA)

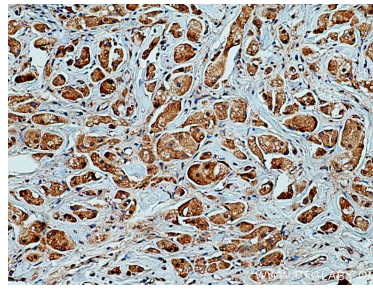
E: proteintech@ptglab.com  
W: ptglab.com

This product is exclusively available under Proteintech Group brand and is not available to purchase from any other manufacturer.

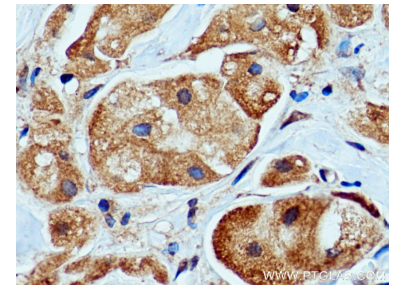
## Données de validation sélectionnées



Various lysates were subjected to SDS PAGE followed by western blot with 67202-1-Ig (PEPD antibody) at dilution of 1:4000 incubated at room temperature for 1.5 hours.



Immunohistochemical analysis of paraffin-embedded human breast cancer tissue slide using 67202-1-Ig (PEPD antibody) at dilution of 1:500 (under 10x lens). Heat mediated antigen retrieval with Tris-EDTA buffer (pH 9.0).



Immunohistochemical analysis of paraffin-embedded human breast cancer tissue slide using 67202-1-Ig (PEPD antibody) at dilution of 1:500 (under 40x lens). Heat mediated antigen retrieval with Tris-EDTA buffer (pH 9.0).