

À des fins de recherche uniquement

Anticorps Monoclonal anti-DCC-Specific



Numéro de catalogue: 67203-1-Ig

Informations de base

Numéro de catalogue: 67203-1-Ig	Numéro d'acquisition GenBank: NM_005215	Méthode de purification: Purification par protéine A
Taille: 150ul , Concentration: 2400 µg/ml by Nanodrop and 1000 µg/ml by Bradford method using BSA as the standard;	Identification du gène (NCBI): 1630	CloneNo.: 2G4G4
Hôte: Mouse	Nom complet: deleted in colorectal carcinoma	Dilutions recommandées: WB 1:1000-1:4000
Isotype: IgG2a	MW calculé 1447 aa, 158 kDa	
Immunogen Catalog Number: AG20569	MW observés: 180 kDa	

Applications

Applications testées: WB, ELISA	Contrôles positifs: WB : tissu cérébral de souris,
Spécificité de l'espèce: Humain, souris	

Informations générales

DCC, also named as IGDCC1, belongs to the immunoglobulin superfamily and DCC family. DCC is a receptor for netrin required for axon guidance. DCC plays a key role in the developing nervous system. Its association with UNC5 proteins may trigger signaling for axon repulsion. It also acts as a dependence receptor required for apoptosis induction when not associated with netrin ligand. DCC gene is a tumor suppressor gene. This antibody recognizes endogenous DCC with an apparent molecular weight of 180 kDa. As the predicted molecular mass of DCC is 158 kDa, the slower mobility is likely attributable to post-translational modification, perhaps by glycosylation at potential N-linked glycosylation sites (PMID: 7926722; 8044801).

Stockage

Stockage:
Stocker à -20 °C
Tampon de stockage:
PBS avec azoture de sodium à 0,02 % et glycérol à 50 % pH 7,3
L'aliquotage n'est pas nécessaire pour le stockage à -20C

*** Les 20ul contiennent 0,1% de BSA.

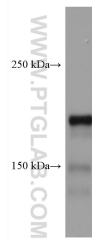
For technical support and original validation data for this product please contact:

T: 1 (888) 4PTGLAB (1-888-478-4522) (toll free
in USA), or 1(312) 455-8498 (outside USA)

E: proteintech@ptglab.com
W: ptglab.com

This product is exclusively available under Proteintech Group brand and is not available to purchase from any other manufacturer.

Données de validation sélectionnées



mouse brain tissue were subjected to SDS PAGE followed by western blot with 67203-1-Ig (DCC-Specific antibody) at dilution of 1:2000 incubated at room temperature for 1.5 hours.