

À des fins de recherche uniquement

# Anticorps Monoclonal anti-SQLE

Numéro de catalogue: 67206-1-Ig **1 Publications**



## Informations de base

Numéro de catalogue: 67206-1-Ig	Numéro d'acquisition GenBank: BC017033	Méthode de purification: Purification par protéine A
Taille: 150ul , Concentration: 1000 µg/ml by Bradford method using BSA as the standard;	Identification du gène (NCBI): 6713	CloneNo.: 1C9A2
Hôte: Mouse	Nom complet: squalene epoxidase	Dilutions recommandées: WB 1:2000-1:10000 IF 1:400-1:1600
Isotype: IgG2a	MW calculé 574 aa, 64 kDa	
Immunogen Catalog Number: AG3266	MW observés: 50-64 kDa	

## Applications

Applications testées: IF, WB, ELISA	Contrôles positifs:
Demandes citées: WB	WB : cellules A549, cellules HEK-293, cellules HepG2, cellules HSC-T6, cellules L02
Spécificité de l'espèce: Humain, porc, rat	IF : cellules HEK-293,
Espèces citées: souris	

## Informations générales

SQLE, also named as ERG1, SE and SM, belongs to the squalene monooxygenase family. It catalyzes the first oxygenation step in cholesterol synthesis, acting on squalene before cyclization into the basic steroid structure. SQLE may serve as a flux-controlling enzyme beyond 3-hydroxy-3-methylglutaryl-coenzyme A reductase (HMGR, considered as rate limiting). It is also posttranslationally regulated by cholesterol-dependent proteasomal degradation. SQLE is subject to feedback regulation via cholesterol-induced degradation, which depends on its lipid-sensing N terminal regulatory domain. Truncation of SQLE occurs during its endoplasmic reticulum-associated degradation and requires the proteasome, which partially degrades the SQLE N-terminus and eliminates cholesterol-sensing elements within this region. The MW of SQLE is about 50-64 kDa. (PMID:21356516, PMID:28972164)

## Publications notables

Autrice	Pubmed ID	Journal	Application
Xinyuan Zhao	37490552	Adv Sci (Weinh)	WB

## Stockage

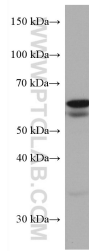
Stockage:  
Stocker à -20°C. Stable pendant un an après l'expédition.  
Tampon de stockage:  
PBS avec azoture de sodium à 0,02 % et glycérol à 50 % pH 7,3  
L'aliquotage n'est pas nécessaire pour le stockage à -20C

\*\*\* Les 20ul contiennent 0,1% de BSA.

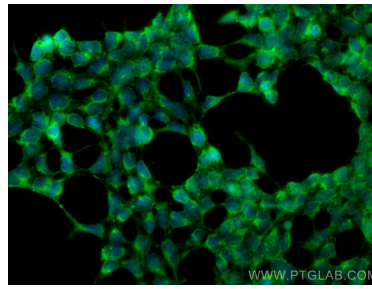
For technical support and original validation data for this product please contact:  
T: 1 (888) 4PTGLAB (1-888-478-4522) (toll free in USA), or 1(312) 455-8498 (outside USA)  
E: proteintech@ptglab.com  
W: ptglab.com

This product is exclusively available under Proteintech Group brand and is not available to purchase from any other manufacturer.

## Données de validation sélectionnées



A549 cells were subjected to SDS PAGE followed by western blot with 67206-1-Ig (SQLE antibody) at dilution of 1:5000 incubated at room temperature for 1.5 hours.



Immunofluorescent analysis of (-20°C Ethanol) fixed HEK-293 cells using SQLE antibody (67206-1-Ig, Clone: 1C9A2) at dilution of 1:400 and CoraLite®488-Conjugated AffiniPure Goat Anti-Mouse IgG(H+L).