

À des fins de recherche uniquement

Anticorps Monoclonal anti-FGFR1OP

Numéro de catalogue: 67207-1-Ig



Informations de base

Numéro de catalogue: 67207-1-Ig	Numéro d'acquisition GenBank: BC011902	Méthode de purification: Purification par protéine G
Taille: 150ul , Concentration: 2400 µg/ml by Nanodrop and 1000 µg/ml by Bradford method using BSA as the standard;	Identification du gène (NCBI): 11116	CloneNo.: 1F1D8
Hôte: Mouse	Nom complet: FGFR1 oncogene partner	Dilutions recommandées: WB 1:5000-1:50000
Isotype: IgG1	MW calculé 43 kDa	
Immunogen Catalog Number: AG28671	MW observés: 52 kDa	

Applications

Applications testées: WB, ELISA	Contrôles positifs: WB : cellules HeLa, cellules K-562, cellules U2OS
Spécificité de l'espèce: Humain	

Informations générales

FGFR1OP, also named as FOP, is a centrosomal protein that is involved in the anchoring of microtubules to subcellular structures. Three isoforms have been produced by alternative splicing. A chromosomal aberration involving FGFR1OP may be a cause of stem cell myeloproliferative disorder (MPD). MPD is characterized by myeloid hyperplasia, eosinophilia and T-cell or B-cell lymphoblastic lymphoma and progresses to acute myeloid leukemia.

Stockage

Stockage:
Stocker à -20°C. Stable pendant un an après l'expédition.
Tampon de stockage:
PBS avec azoture de sodium à 0,02 % et glycérol à 50 % pH 7,3
L'aliquotage n'est pas nécessaire pour le stockage à -20C

*** Les 20ul contiennent 0,1% de BSA.

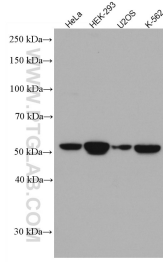
For technical support and original validation data for this product please contact:

T: 1 (888) 4PTGLAB (1-888-478-4522) (toll free
in USA), or 1(312) 455-8498 (outside USA)

E: proteintech@ptglab.com
W: ptglab.com

This product is exclusively available under Proteintech Group brand and is not available to purchase from any other manufacturer.

Données de validation sélectionnées



Various lysates were subjected to SDS PAGE followed by western blot with 67207-1-Ig (FGFR1OP antibody) at dilution of 1:10000 incubated at room temperature for 1.5 hours.