

À des fins de recherche uniquement

Anticorps Monoclonal anti-CDC42

Numéro de catalogue: 67212-1-Ig



Informations de base

Numéro de catalogue: 67212-1-Ig	Numéro d'acquisition GenBank: BC002711	Méthode de purification: Précipitation de l'acide caprylique/du sulfate d'ammonium
Taille: 150ul , Concentration: 1000 µg/ml by Bradford method using BSA as the standard;	Identification du gène (NCBI): 998	CloneNo.: 2G5E8
Hôte: Mouse	Nom complet: cell division cycle 42 (GTP binding protein, 25kDa)	Dilutions recommandées: WB 1:5000-1:20000
Isotype: IgM	MW calculé: 21 kDa	
Immunogen Catalog Number: AG28550	MW observés: 21 kDa	

Applications

Applications testées:
WB, ELISA

Spécificité de l'espèce:
Humain, rat, souris

Contrôles positifs:

WB : cellules HeLa, cellules HEK-293, cellules HSC-T6, cellules Jurkat, cellules MCF-7, cellules NIH/3T3, tissu cérébral de rat, tissu cérébral de souris, tissu de cervelet de souris

Informations générales

Cdc42, the human homologue of the cell division cycle 42 of *Saccharomyces cerevisiae*, belongs to the Rho/Rac subfamily of Ras-like GTPases. It acts as molecular switches to regulate numerous cellular responses including the organization of the actin cytoskeleton, gene transcription, cell cycle progression, and membrane trafficking

Stockage

Stockage:
Stocker à -20°C. Stable pendant un an après l'expédition.

Tampon de stockage:
PBS avec azoture de sodium à 0,1 % et glycérol à 50 % pH 7,3

L'aliquotage n'est pas nécessaire pour le stockage à -20C

*** Les 20ul contiennent 0,1% de BSA.

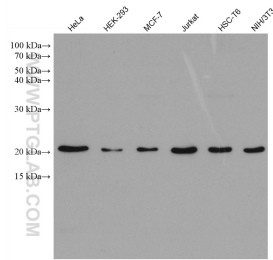
For technical support and original validation data for this product please contact:

T: 1 (888) 4PTGLAB (1-888-478-4522) (toll free in USA), or 1(312) 455-8498 (outside USA)

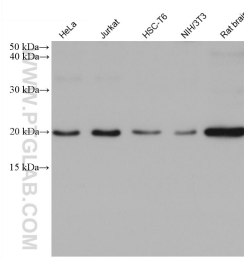
E: proteintech@ptglab.com
W: ptglab.com

This product is exclusively available under Proteintech Group brand and is not available to purchase from any other manufacturer.

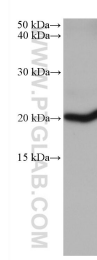
Données de validation sélectionnées



Various lysates were subjected to SDS PAGE followed by western blot with 67212-1-Ig (CDC42 antibody) at dilution of 1:10000 incubated at room temperature for 1.5 hours.



Various lysates were subjected to SDS PAGE followed by western blot with 67212-1-Ig (CDC42 antibody) at dilution of 1:5000 incubated at room temperature for 1.5 hours.



mouse cerebellum tissue were subjected to SDS PAGE followed by western blot with 67212-1-Ig (CDC42 antibody) at dilution of 1:5000 incubated at room temperature for 1.5 hours.