

À des fins de recherche uniquement

Anticorps Monoclonal anti-BCAR1

Numéro de catalogue: 67215-1-Ig **2 Publications**



Informations de base

Numéro de catalogue:	67215-1-Ig	Numéro d'acquisition GenBank:	BC062556	Méthode de purification:	Purification par protéine A
Taille:	150ul , Concentration: 2028 µg/ml by Nanodrop and 1000 µg/ml by Bradford method using BSA as the standard;	Identification du gène (NCBI):	9564	CloneNo.:	2D11C10
Hôte:	Mouse	Nom complet:	breast cancer anti-estrogen resistance	Dilutions recommandées:	WB 1:2000-1:10000 IHC 1:250-1:1000 IF 1:200-1:800
Isotype:	IgG2a	MW calculé:	870 aa, 93 kDa		
Immunogen Catalog Number:	AG10604	MW observés:	116 kDa		

Applications

Applications testées:
FC, IF, IHC, WB, ELISA

Demandes citées:
IF, WB

Spécificité de l'espèce:
Humain

Espèces citées:
Humain

Remarque-IHC: il est suggéré de démasquer l'antigène avec un tampon de TE buffer pH 9,0; (*) A défaut, le démasquage de l'antigène peut être effectué avec un tampon citrate pH 6,0.

Contrôles positifs:

WB : cellules HEK-293, cellules A431, cellules HeLa, cellules MCF-7, cellules MDA-MB-453s, cellules T-47D

IHC : tissu de cancer du sein humain, tissu de cancer du côlon humain

IF : tissu de cancer du sein humain,

Informations générales

Publications notables

Autrice	Pubmed ID	Journal	Application
Tingting Hu	35360840	Front Genet	WB
Liyang Wu	34956399	Comput Math Methods Med	IF

Stockage

Stockage:
Stocker à -20 °C.
Tampon de stockage:
PBS avec azoture de sodium à 0,02 % et glycérol à 50 % pH 7,3
L'aliquotage n'est pas nécessaire pour le stockage à -20C

*** Les 20ul contiennent 0,1% de BSA.

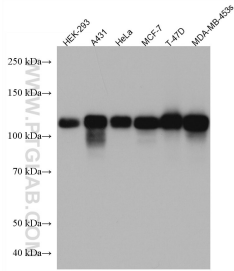
For technical support and original validation data for this product please contact:

T: 1 (888) 4PTGLAB (1-888-478-4522) (toll free in USA), or 1(312) 455-8498 (outside USA)

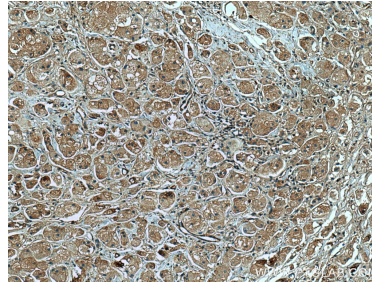
E: proteintech@ptglab.com
W: ptglab.com

This product is exclusively available under Proteintech Group brand and is not available to purchase from any other manufacturer.

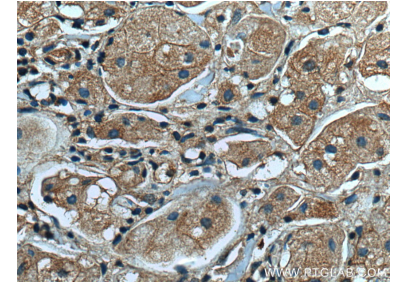
Données de validation sélectionnées



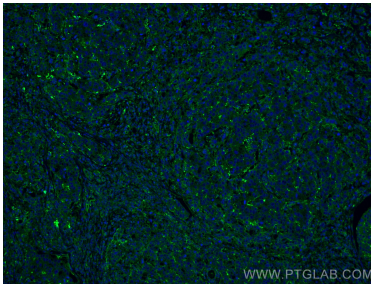
Various lysates were subjected to SDS PAGE followed by western blot with 67215-1-Ig (BCAR1 antibody) at dilution of 1:5000 incubated at room temperature for 1.5 hours.



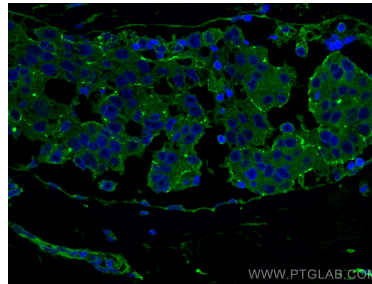
Immunohistochemical analysis of paraffin-embedded human breast cancer tissue slide using 67215-1-Ig (BCAR1 antibody) at dilution of 1:500 (under 10x lens). Heat mediated antigen retrieval with Tris-EDTA buffer (pH 9.0).



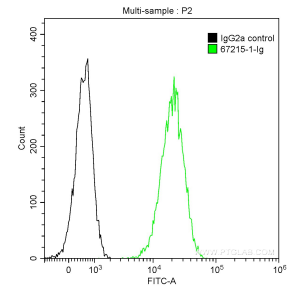
Immunohistochemical analysis of paraffin-embedded human breast cancer tissue slide using 67215-1-Ig (BCAR1 antibody) at dilution of 1:500 (under 40x lens). Heat mediated antigen retrieval with Tris-EDTA buffer (pH 9.0).



Immunofluorescent analysis of (4% PFA) fixed human breast cancer tissue using BCAR1 antibody (67215-1-Ig, Clone: 2D11C10) at dilution of 1:400 and CoraLite@488-Conjugated AffiniPure Goat Anti-Mouse IgG(H+L).



Immunofluorescent analysis of (4% PFA) fixed human breast cancer tissue using BCAR1 antibody (67215-1-Ig, Clone: 2D11C10) at dilution of 1:400 and CoraLite@488-Conjugated AffiniPure Goat Anti-Mouse IgG(H+L).



1×10^6 A431 cells were intracellularly stained with 0.2 ug Anti-Human BCAR1 (67215-1-Ig, Clone:2D11C10) and CoraLite@488-Conjugated AffiniPure Goat Anti-Mouse IgG(H+L) at dilution 1:1000 (green), and 0.2 ug Control Antibody. Cells were fixed with 90% MeOH.