

À des fins de recherche uniquement

Anticorps Monoclonal anti-SLC31A1



Numéro de catalogue: 67221-1-Ig

Phare

3 Publications

Informations de base

Numéro de catalogue: 67221-1-Ig	Numéro d'acquisition GenBank: BC013611	Méthode de purification: Purification par protéine A
Taille: 150ul, Concentration: 2500 µg/ml by Nanodrop and 1000 µg/ml by Bradford method using BSA as the standard;	Identification du gène (NCBI): 1317	CloneNo.: 1A4H5
Hôte: Mouse	Nom complet: solute carrier family 31 (copper transporters), member 1	Dilutions recommandées: WB 1:5000-1:20000 IHC 1:1000-1:4000 IF 1:50-1:500
Isotype: IgG2b	MW calculé 21 kDa	
Immunogen Catalog Number: AG28410	MW observés: 32 kDa	

Applications

Applications testées:
FC, IF, IHC, WB, ELISA

Demandes citées:
IHC, WB

Spécificité de l'espèce:
Humain

Espèces citées:
Humain

Remarque-IHC: il est suggéré de démasquer l'antigène avec un tampon de TE buffer pH 9,0; (*) A défaut, 'le démasquage de l'antigène peut être 'effectué avec un tampon citrate pH 6,0.

Contrôles positifs:

WB : cellules HepG2, cellules HeLa
IHC : tissu de cancer du foie humain,
IF : tissu de cancer du foie humain,

Informations générales

Publications notables

Autrice	Pubmed ID	Journal	Application
Sandrine Tury	35652657	J Virol	WB
Shuying Liu	37215133	Front Immunol	IHC
Qingyuan Lin	37091865	Front Mol Biosci	IHC

Stockage

Stockage:
Stocker à -20°C. Stable pendant un an après l'expédition.
Tampon de stockage:
PBS avec azoture de sodium à 0,02 % et glycérol à 50 % pH 7,3
L'aliquotage n'est pas nécessaire pour le stockage à -20C

*** Les 20ul contiennent 0,1% de BSA.

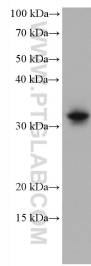
For technical support and original validation data for this product please contact:

T: 1 (888) 4PTGLAB (1-888-478-4522) (toll free
in USA), or 1(312) 455-8498 (outside USA)

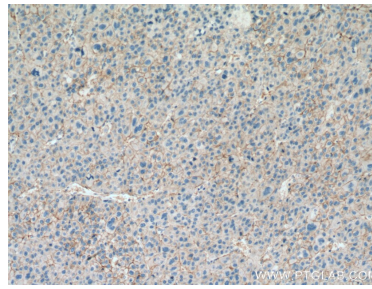
E: proteintech@ptglab.com
W: ptglab.com

This product is exclusively available under Proteintech Group brand and is not available to purchase from any other manufacturer.

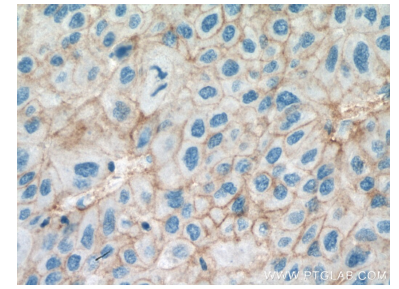
Données de validation sélectionnées



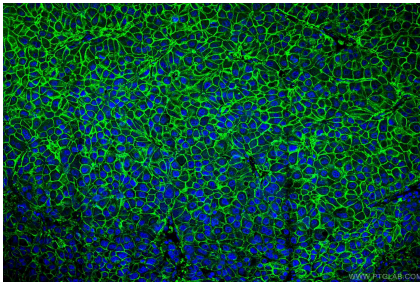
HepG2 cells were subjected to SDS PAGE followed by western blot with 67221-1-Ig (SLC31A1 antibody) at dilution of 1:20000 incubated at room temperature for 1.5 hours.



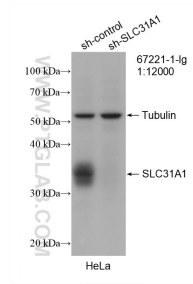
Immunohistochemical analysis of paraffin-embedded human liver cancer tissue slide using 67221-1-Ig (SLC31A1 antibody) at dilution of 1:2000 (under 10x lens). Heat mediated antigen retrieval with Tris-EDTA buffer (pH 9.0).



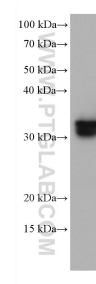
Immunohistochemical analysis of paraffin-embedded human liver cancer tissue slide using 67221-1-Ig (SLC31A1 antibody) at dilution of 1:2000 (under 40x lens). Heat mediated antigen retrieval with Tris-EDTA buffer (pH 9.0).



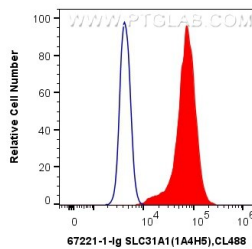
Immunofluorescent analysis of (4% PFA) fixed human liver cancer tissue using 67221-1-Ig (SLC31A1 antibody) at dilution of 1:100 and CoraLite488-Conjugated AffiniPure Goat Anti-Mouse IgG(H+L).



WB result of SLC31A1 antibody (67221-1-Ig; 1:12000; incubated at room temperature for 1.5 hours) with sh-Control and sh-SLC31A1 transfected HeLa cells.



HeLa cells were subjected to SDS PAGE followed by western blot with 67221-1-Ig (SLC31A1 antibody) at dilution of 1:20000 incubated at room temperature for 1.5 hours.



1×10^6 HeLa cells were intracellularly stained with 0.4 ug Anti-Human SLC31A1 (67221-1-Ig, Clone:1A4H5) and CoraLite®488-Conjugated AffiniPure Goat Anti-Mouse IgG(H+L) at dilution 1:1000 (red), or 0.4 ug Control Antibody. Cells were fixed with 4% PFA and permeabilized with Flow Cytometry Perm Buffer (PF00011-C).